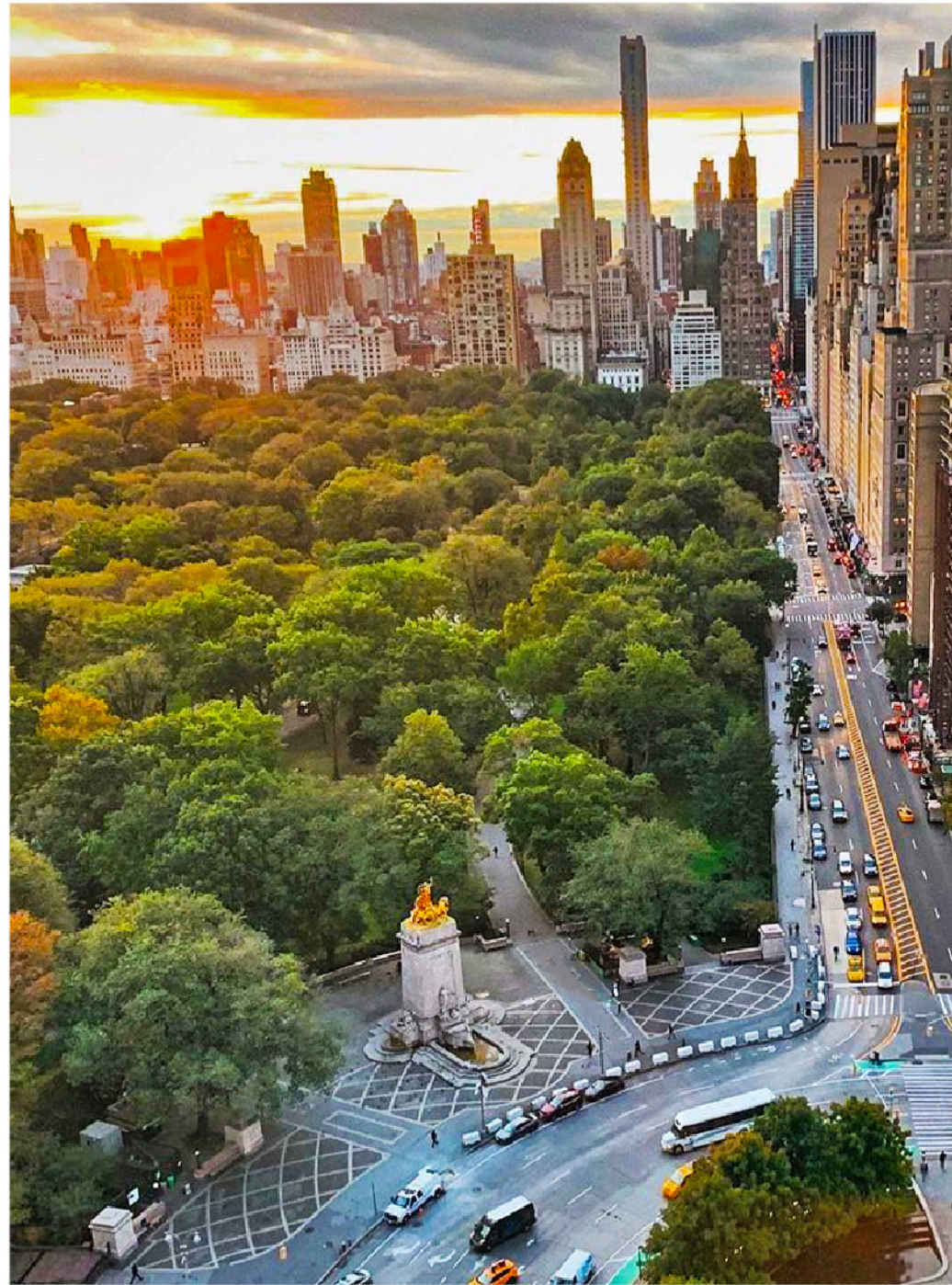




3

COLUMBUS  
C I R C L E  
O F F I C E





**3 Columbus Circle** is among the few buildings that occupy a full New York City block on the threshold of Columbus Circle. This Midtown office building neighbors Broadway and 8th Avenue on either side. Built in 1904, this leasable office building underwent a renovation program by the architectural firm Gensler, resulting in an upgrade to new expansive interiors and elegant corridors. 3 Columbus Circle offers exciting views of Central Park, the Columbus Circle, and the entire neighborhood itself. This office building is situated amongst opulent shopping, retail stores, and famous landmarks, including Carnegie Hall, 57th Street shopping corridor, and the Spy Museum.

**Transportation:** Subway Lines: A, B, C, D , E, N, Q ,R & 1. LGA Airport, JFK Airport, Yorkville Airport, and the Teterboro Airport, are all conveniently located within a 30-minute drive. **Details:** Year Built: 1904 Rentable Area:750,564 sf Floors: 29





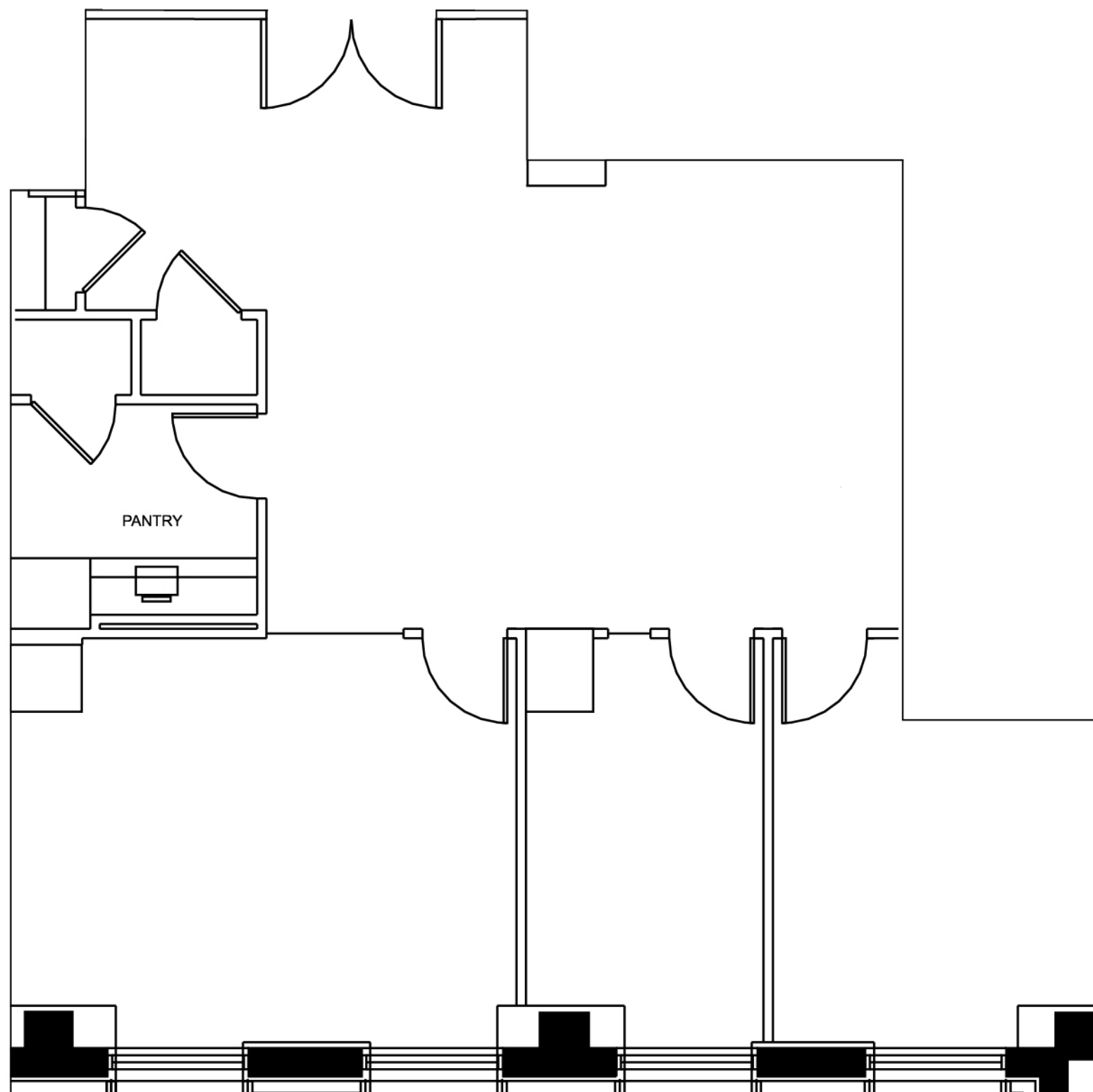
# 3

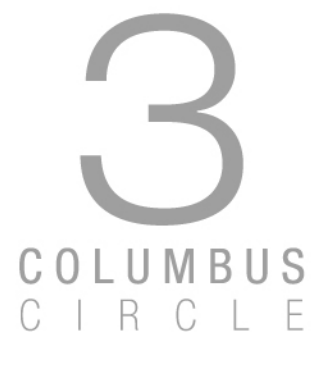
COLUMBUS  
C I R C L E

Suite 1410

Size  
2,130 RSF

Available  
March 1, 2023





## Property Specifications

### Ownership

The Moinian Group

### Management

The Moinian Group

### Electrical Service

Six electrical services for power at 120/208 volts; up to 6 watts per USF available for tenant use

### Telecommunications

Verizon Business, Cogent Technologies, Lighttower, & TWE for data and telecommunication requirements; fiber optics are available

### Leasing

The Moinian Group

### Building Size

Total RSF: 751,685 RSF

### Windows

Office floors mullion spacing is 4' to 4'-6"

### Ceiling Height

Typical 11'-9" slab-to-slab

### Lobby

Lobby featuring luminous materials including back-lit, frosted-glass walls, brushed bronze wall accents and highly honed Stellar white marble floor

### Elevators

Eight Passenger Elevators  
& Two Freight Elevators

### Access & Security

Attended Lobby  
24 Hours a day, 7 Days a week  
Closed Circuit Television (CCTV) monitoring at all entrance/exit points

### Transportation

Subway Lines: A, B, C, D , E, N, Q ,R & 1  
Bus Lines: M10, M20, M31, M57 & M104