

# 168 EAST 80<sup>TH</sup> STREET

ON 80<sup>TH</sup> STREET, BETWEEN THIRD & LEX

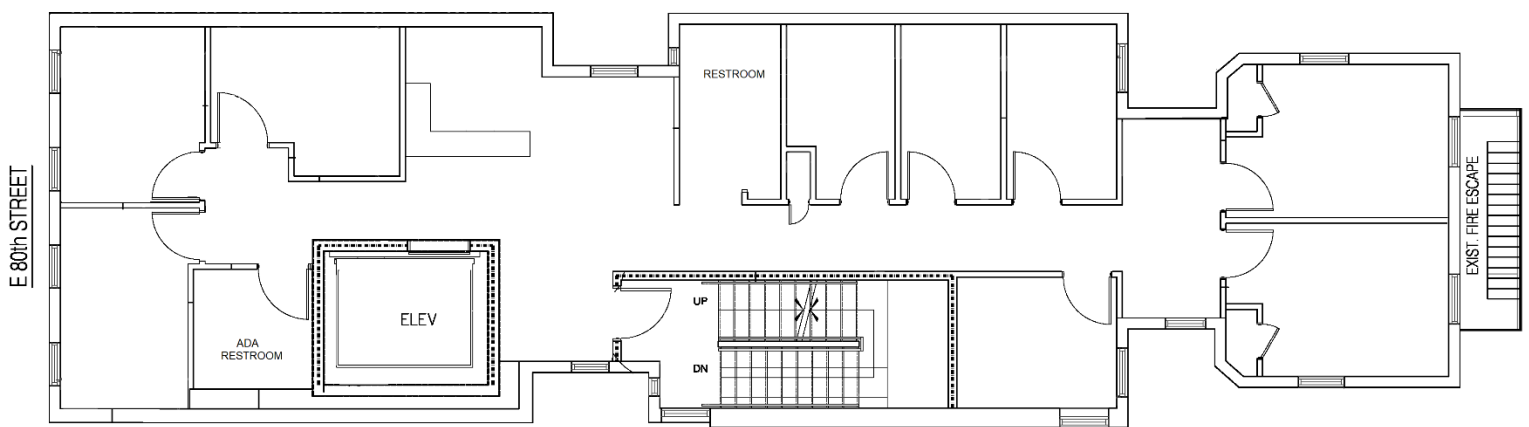
**1,800-12,800 RSF**

**MEDICAL/NFP/SCHOOL/  
COMMUNITY FACILITY**

TAKE ALL OR A PORTION OF THE  
BUILDING TO SUIT YOUR NEEDS







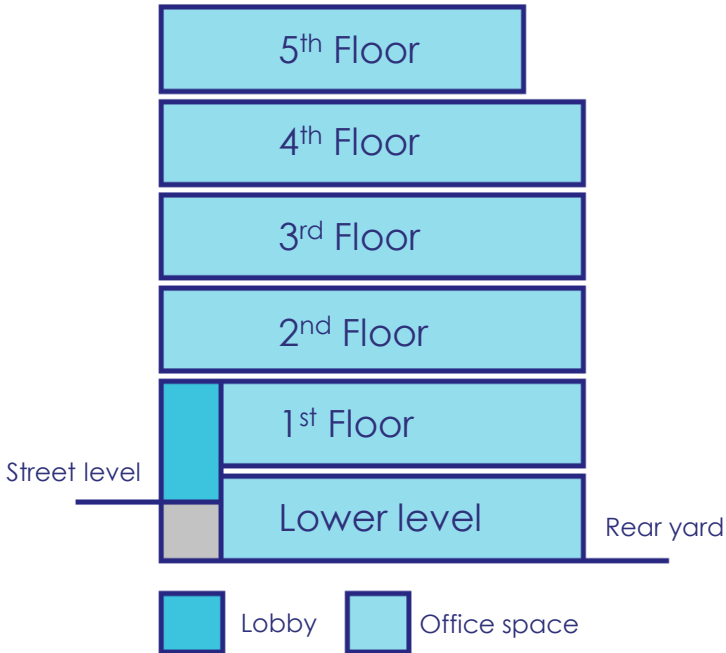
Floor plan, floors 2-4

# 168 EAST 80<sup>TH</sup> STREET

ON 80<sup>TH</sup> STREET, BETWEEN THIRD & LEX

## HIGHLIGHTS

- Zoned for use groups 3 & 4
- Elevator – ADA compliant & oversized
- 24/7 HVAC, individually controlled
- Walking distance from 4, 5, 6, Q trains
- Structural steel frame construction
- Landlord to deliver full & partial prebuilts



FLOOR	RSF
Lower Level	2,200 + backyard
1st	2,200
2nd	2,200
3rd	2,200
4th	2,200
5th	1,800 + rooftop
Total:	12,800