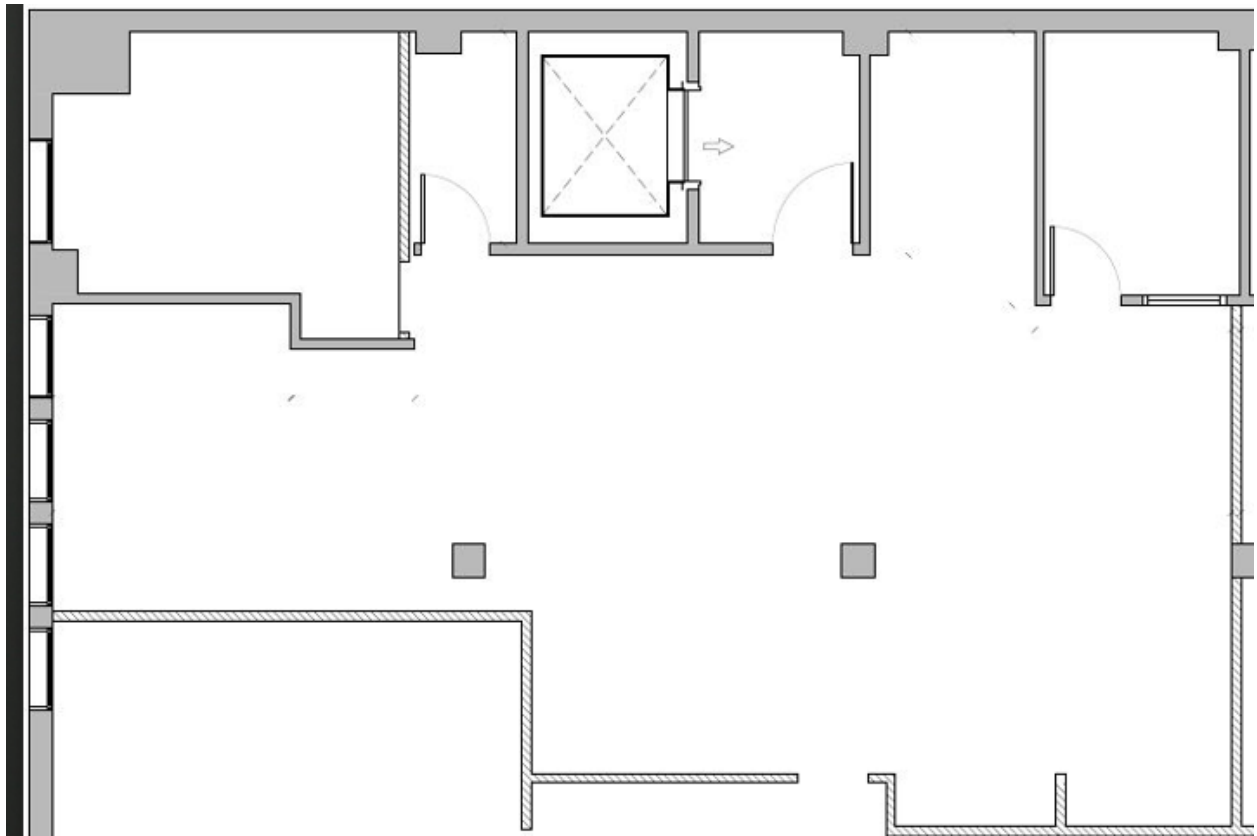


135 West 26 Street - Suite 6B - 2235 SF

•Front facing office in a well-maintained building •Great light •11' ceilings •Ductless split air conditioning •Hardwood floors •Large Bullpen •Wet Pantry •2 Private offices •Water/sprinkler \$65/\$40 per month •Sub metered electric •2-3 year Term •Annual escalations 3% •Trash extra •Prop. Share of RE Taxes over Base Year

6th Floor Plan



Photo

