

THE ICONIC DESIGN BY ACCLAIMED ARCHITECT HELMUT JAHN



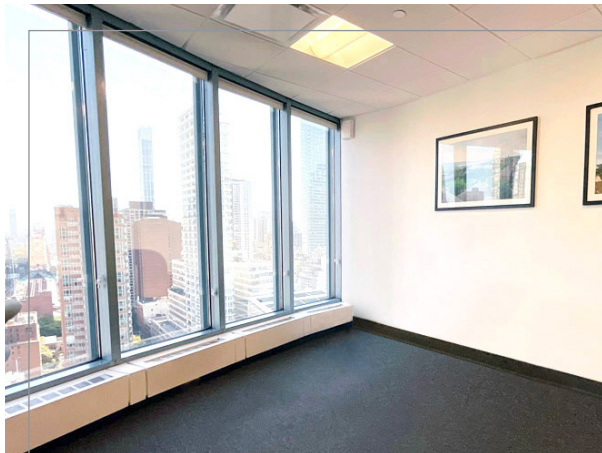
750

LEXINGTON
INTERNATIONAL PLAZA

NEW YORK, NY

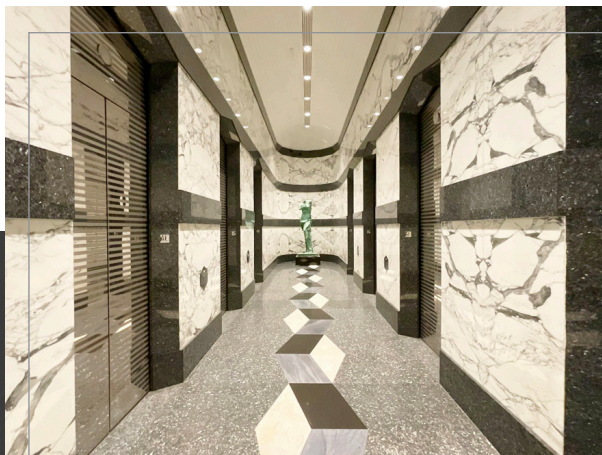


UPGRADE YOUR PERSPECTIVE



Floor-to-ceiling windows offer abundant natural light and exceptional views in every direction.

- Excellent location in the Plaza District with skyline prominence
- Exceptional accessibility, retail, and dining
- Spacious wrap-around plaza
- Enter the building through an elegantly designed marble lobby



NEAR **BLOOMBERG,**
CANTOR FITZGERALD, CITADEL,
ESTÉE LAUDER, & BLACKSTONE



CLOSE PROXIMITY TO
4, 5, 6, N, R, W
TRAINS



TENANT
IMPROVEMENT
WORK AVAILABLE

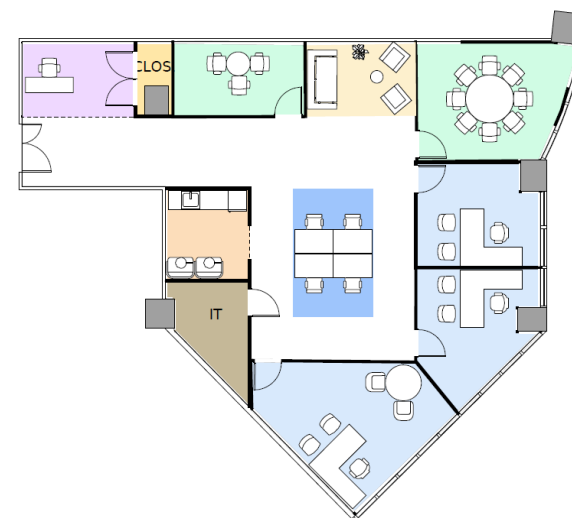


AVAILABILITIES

FLOOR	SUITE	RSF
Partial 5th	503	1,970
Partial 23rd	2303	2,375



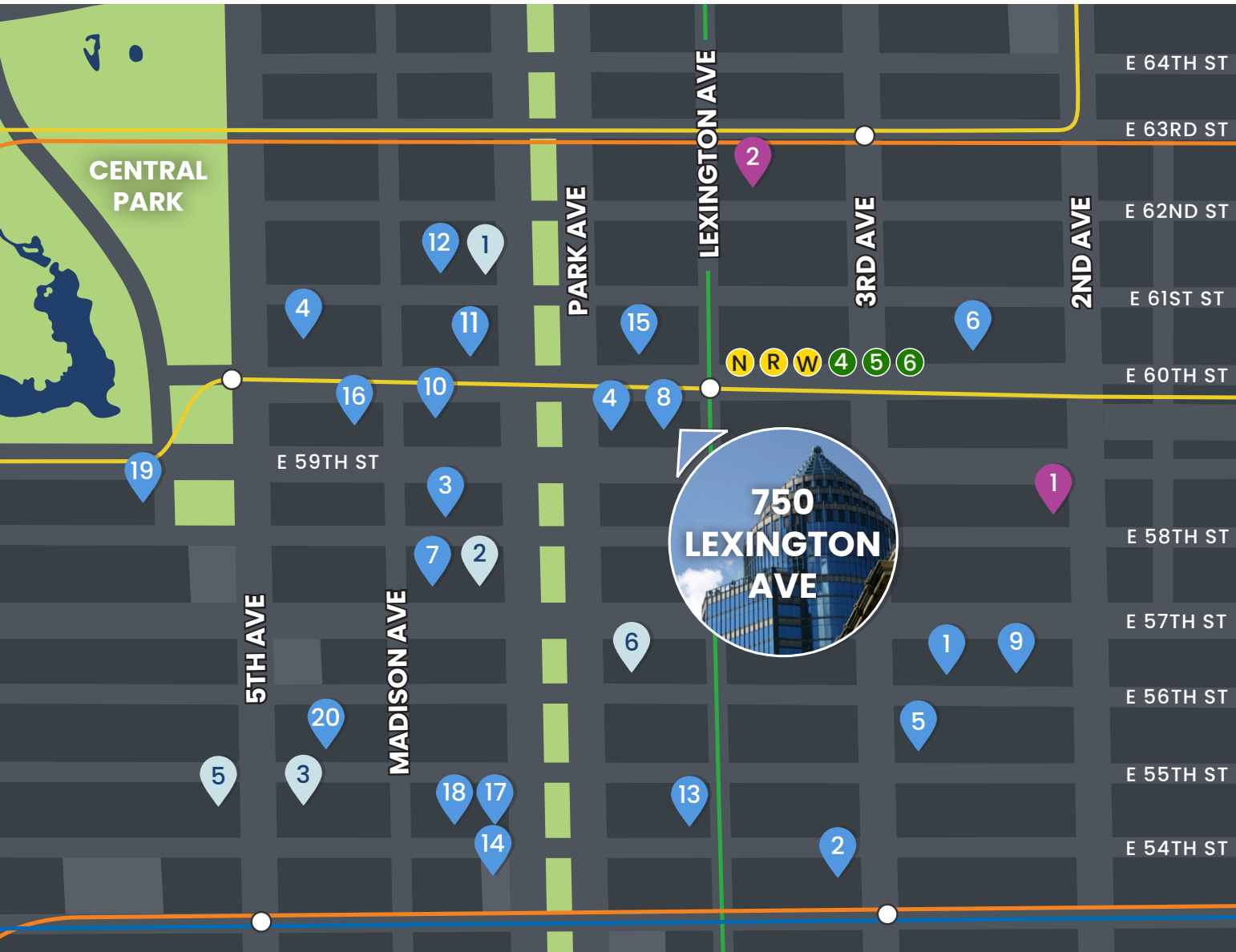
SUITE 1700 (TEST FIT)



SUITE 2302 (TEST FIT)



NEIGHBORHOOD



RESTAURANTS

1. Amata
2. Hillstone
3. LAVO
4. Piccola Cucina Uptown
5. PJ Clarke's
6. Serendipity
7. TAO
8. TBar
9. Whole Foods
10. Le Bilboquet
11. Il Mulino
12. Serafina
13. Bobby Van's
14. Casa Lever
15. The Bar Room
16. Avra Madison Estiatorio
17. Cellini
18. Nerai
19. Nobu
20. The Polo Bar



HOTELS

1. Loews Regency
2. Four Seasons Hotel
3. The St. Regis
4. The Pierre
5. The Peninsula
6. The Lombardy



GYMS

1. Crunch Fitness
2. Equinox (63rd)



LEXINGTON
INTERNATIONAL PLAZA