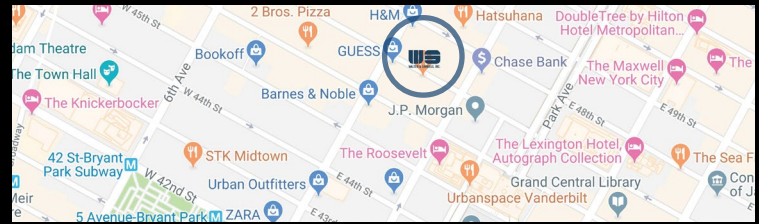


5 EAST 47TH STREET

Turn-key & move-in ready - Steps Off Fifth Avenue

5th Floor: 2,500 RSF



Medical Office Space Opportunity

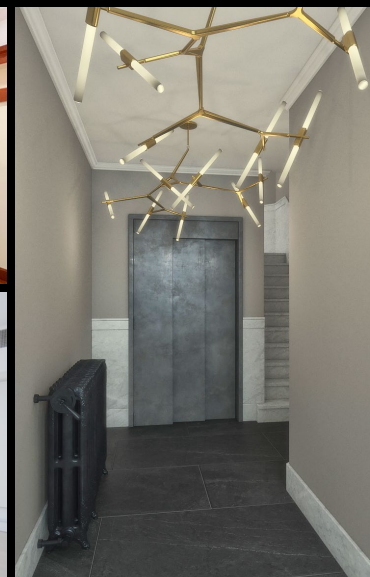
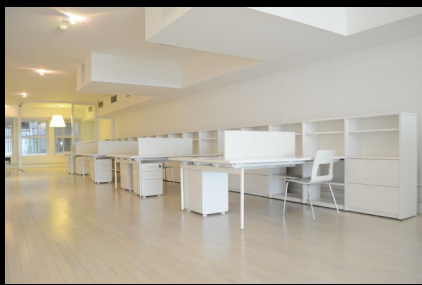
ADDRESS: 5 East 47th Street
CROSS STREETS: Fifth & Madison Avenues
AVAILABLE SPACE: 2,500 - 7,500 RSF
ASKING RENT: Upon Request
CONDITIONS: Built space
TERM: 3 to 10 Years

Property Highlights

24 hours 7 days a week access, tenant controlled central A/C systems. In the heart of the Diamond District with proximity to Garden Central & Rockefeller Center. Brand new elevator and lobby recently completed.

Transportation

D, B, F, M, E, S, 4, 5, 6, 7 & (Metro-North)

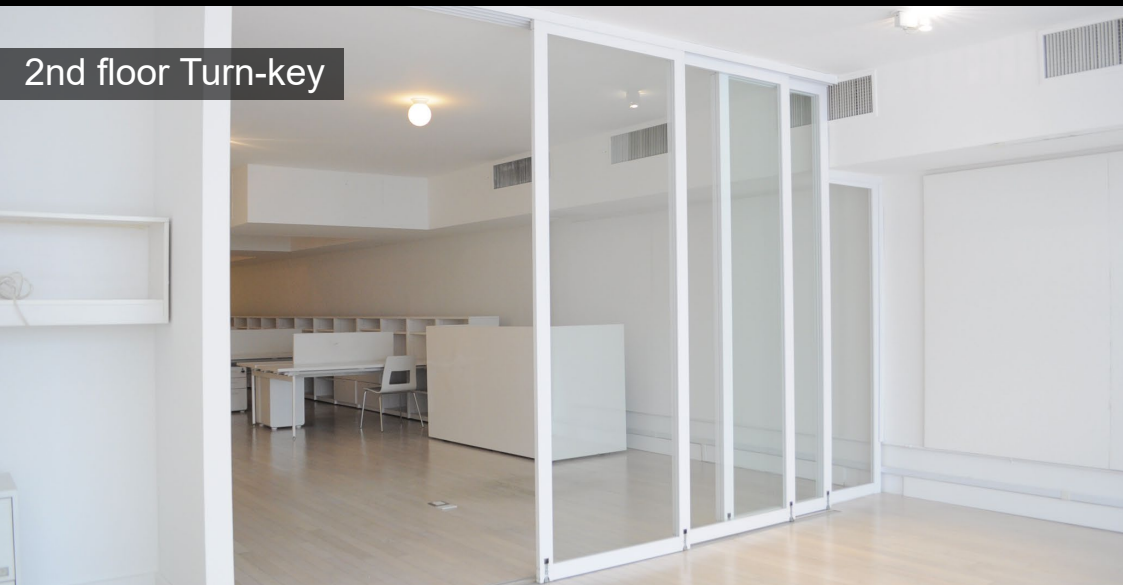




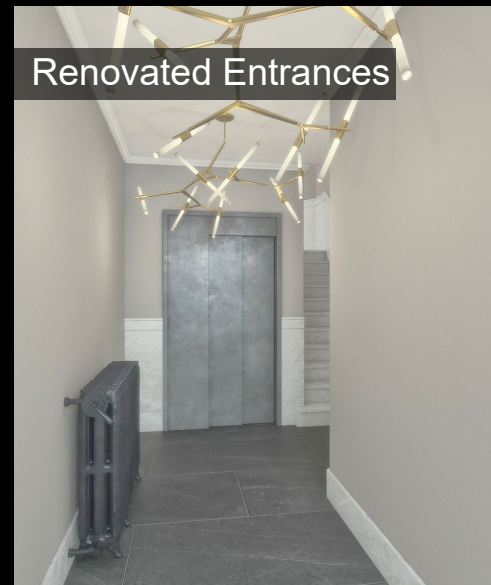
5th floor - Reception



Great Natural Lighting



2nd floor Turn-key



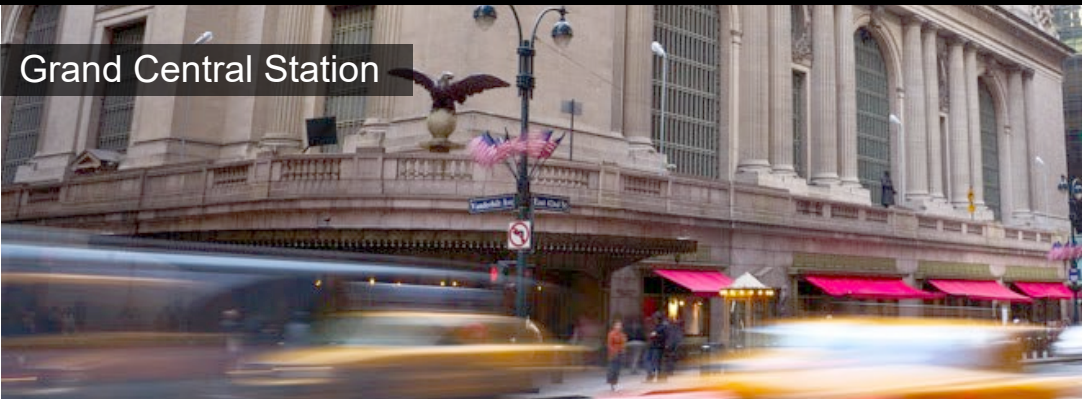
Renovated Entrances



Rockefeller Center



5th floor



Grand Central Station



5th floor

FOR LEASE

OFFICE AVAILABILITY

5TH FLOOR

5 EAST 47TH AVENUE

BETWEEN FIFTH & MADISON AVENUES

5TH | ENTIRE 2,500 RSF

- Full Floor Presence
- Direct Elevator Exposure
- Brand NEW Elevator
- 4 Offices/ Flex 6 Offices
- Copy/File room

SPACE NOTES

- Wet Pantry + Wine Cooler
- Column Free Floorplate
- Close Proximity to Grand Central, Fifth Avenue and Diamond District

Turnkey Space

