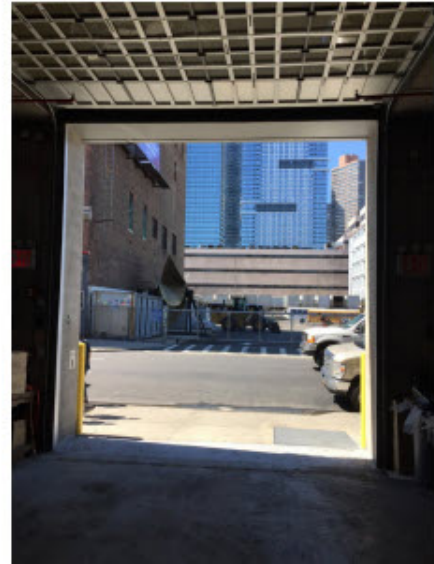


621

West 46th Street



Retail/Flex Loft Space

Ground Floor

- Ceiling height 18'
- All uses considered (no night clubs)
- Transparent roll up garage doors for easy car or truck access
- Curb cut in place
- 40' of frontage

Second Floor Office

- 100' of glass frontage
- Fully fit out space ready for occupancy
- Space includes bathrooms, kitchens, conference room and private offices.
- Direct elevator access to suite
- Windows that look down to ground floor space

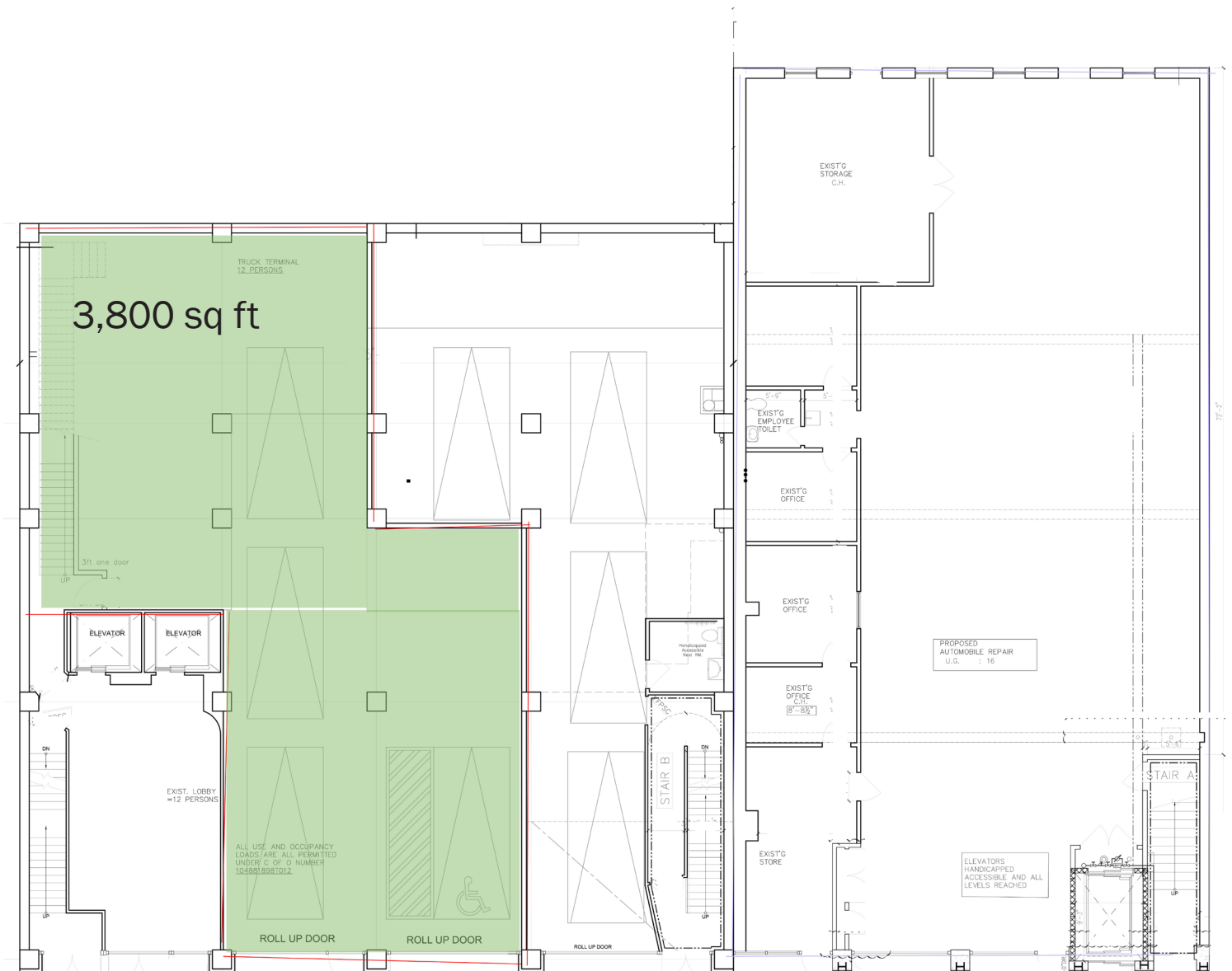
Ground Floor + Second Floor For Lease

3,800 sq ft Ground Floor
2,500 sq ft Second Floor

Price Available Upon Request

621 West 46th Street

Ground Floor

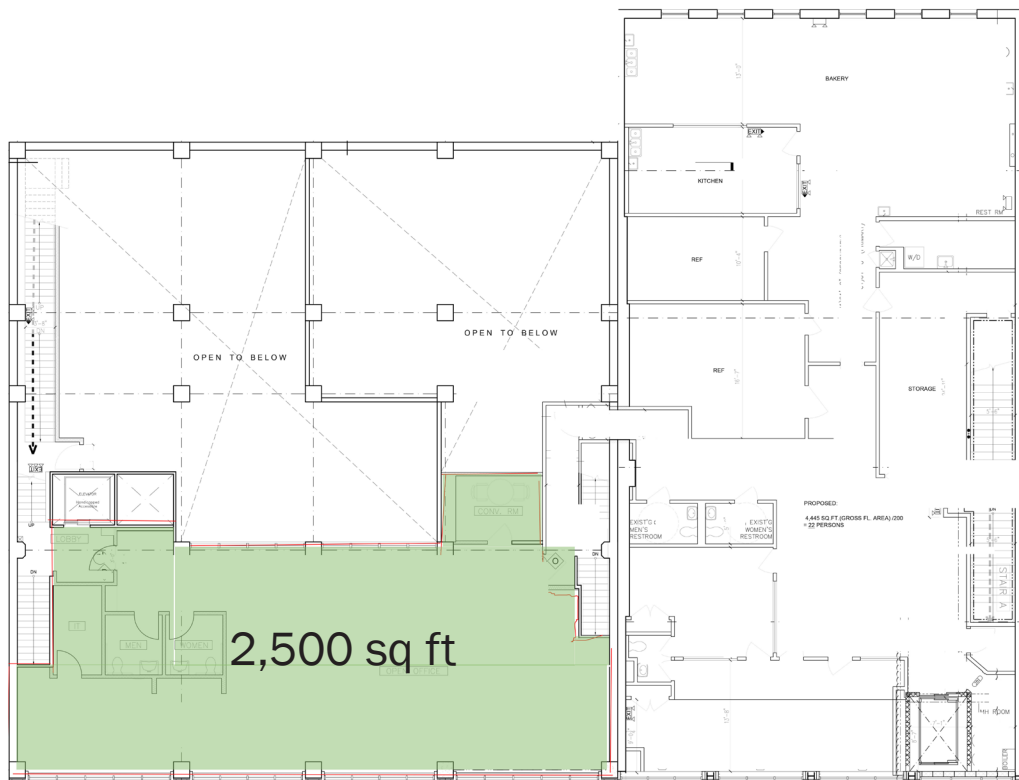


West 46th Street

621

West 46th Street

Second Floor



West 46th Street