

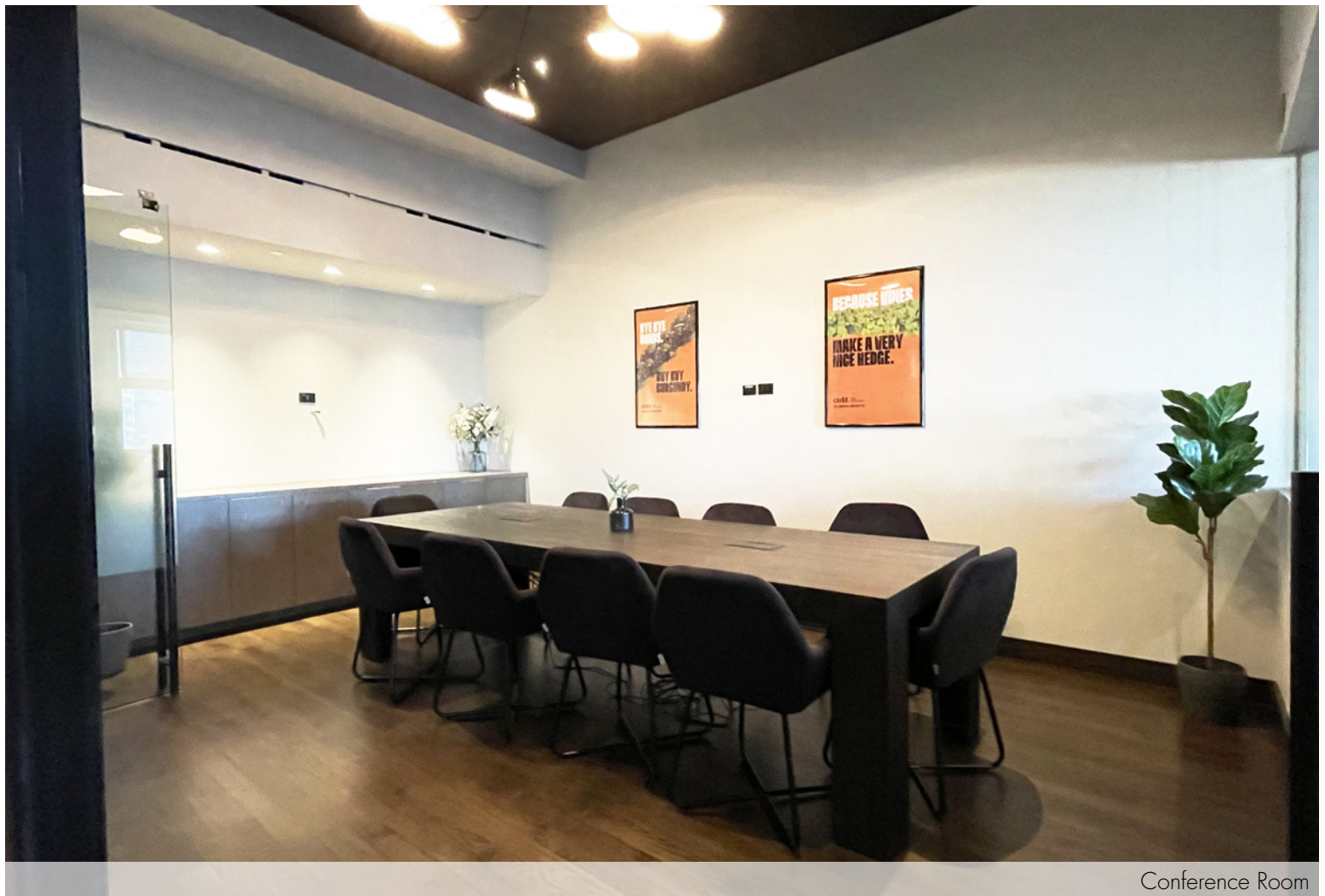
Current Conditions

# 200 Park Avenue South

Northwest Corner of East 17th Street, Union Square

Recent Custom Buildout | 2,503 RSF Space  
Steps from all that Union Square's Surrounding Area Offers  
Green Market, Restaurants, Retail, Citibike & other work/lifestyle benefits

Direct access to the Union Square transportation  
hub's 4 5 6 L N Q R W express/local subways  
and NJ PATH train at 23rd Street/6th Avenue station



Conference Room

Suite 1116: 2,503 rsf

- Built space featuring custom millwork throughout
- Hardwood floors, glass-enclosed office and conference room, wet pantry, open area
- South exposure offer good natural light and views of Union Square Park and One World Trade Center

Possession: Arranged

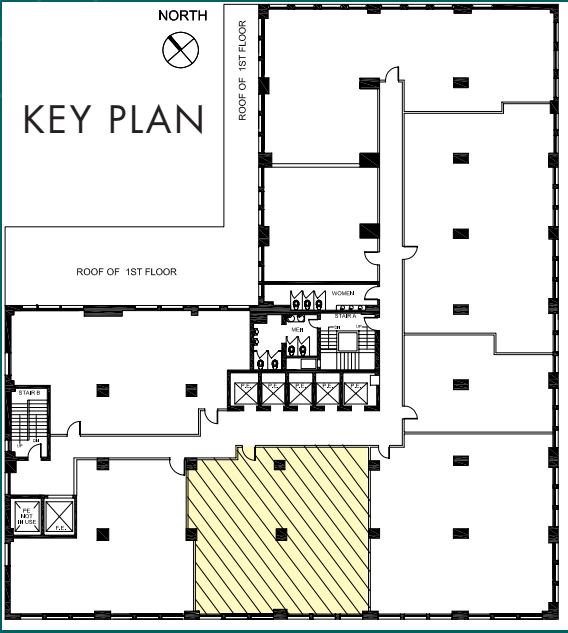
Rent: Call or email for details



- Overlooking Union Square Park, offering tenants a burgeoning submarket full of creative tenancy
- 12'-2" Ceiling heights and tenant controlled air conditioning
- Card-key security system providing 24/7/365 access via attended lobby
- Direct access to the Union Square transportation hub's 4 5 6 L N Q R W express and local subway lines, and vicinity of NJ PATH station at 23rd St/6th Ave
- Steps from the farmers market and Broadway's retail corridor offering a wide selection of shopping and dining options, fitness studios, and a myriad of other work/lifestyle benefits



SUITE 1116 - 2,503 RSF  
(AS-BUILT)



Floor Plan not to scale, for display purposes only









