

200 Park Avenue South

Northwest Corner of East 17th Street, Union Square

Move-In Ready | 2,616 RSF Space

Steps from all that Union Square's Surrounding Area Offers

Green Market, Restaurants, Retail, Citibike & other work/lifestyle benefits

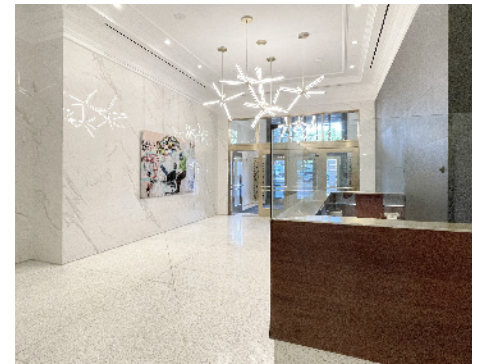
Direct access to the Union Square transportation hub's 4 5 6 L N Q R W express/local subways and NJ PATH train at 23rd Street/6th Avenue station



Westerly View


Suite 1301: 2,616 rsf

- Bright space featuring high-end finishes
- Oversized operable windows throughout
- Glass-enclosed conference/office/meeting rooms
- Full wet pantry with seating space and open area
- Northwest exposure offers amazing natural light and views of Hudson Yards
- Some furniture may be available



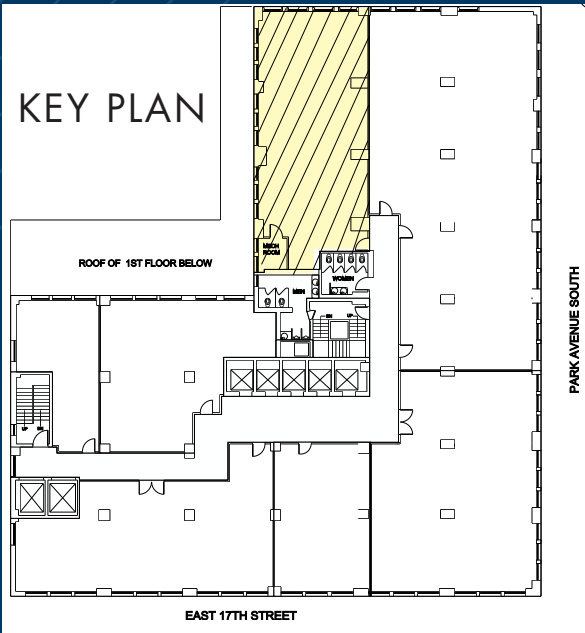
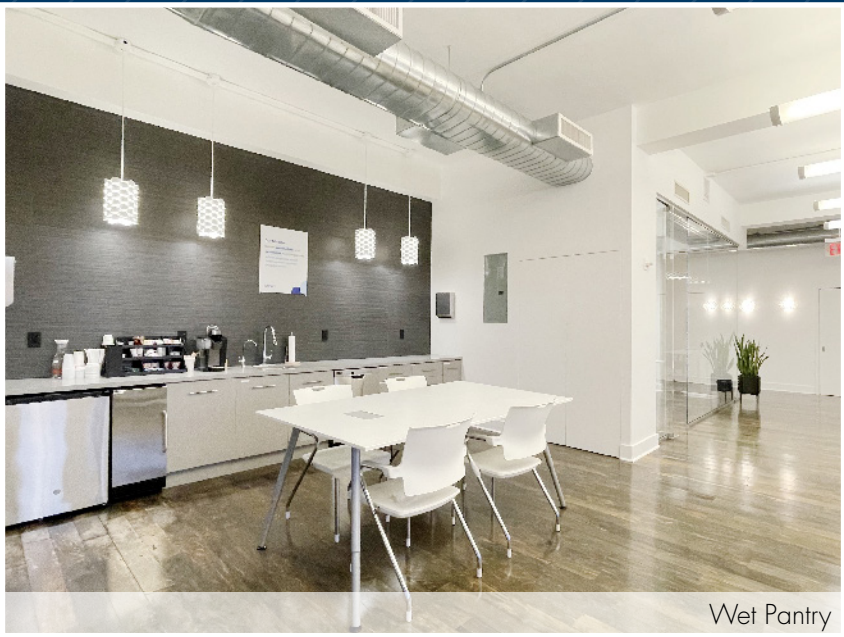
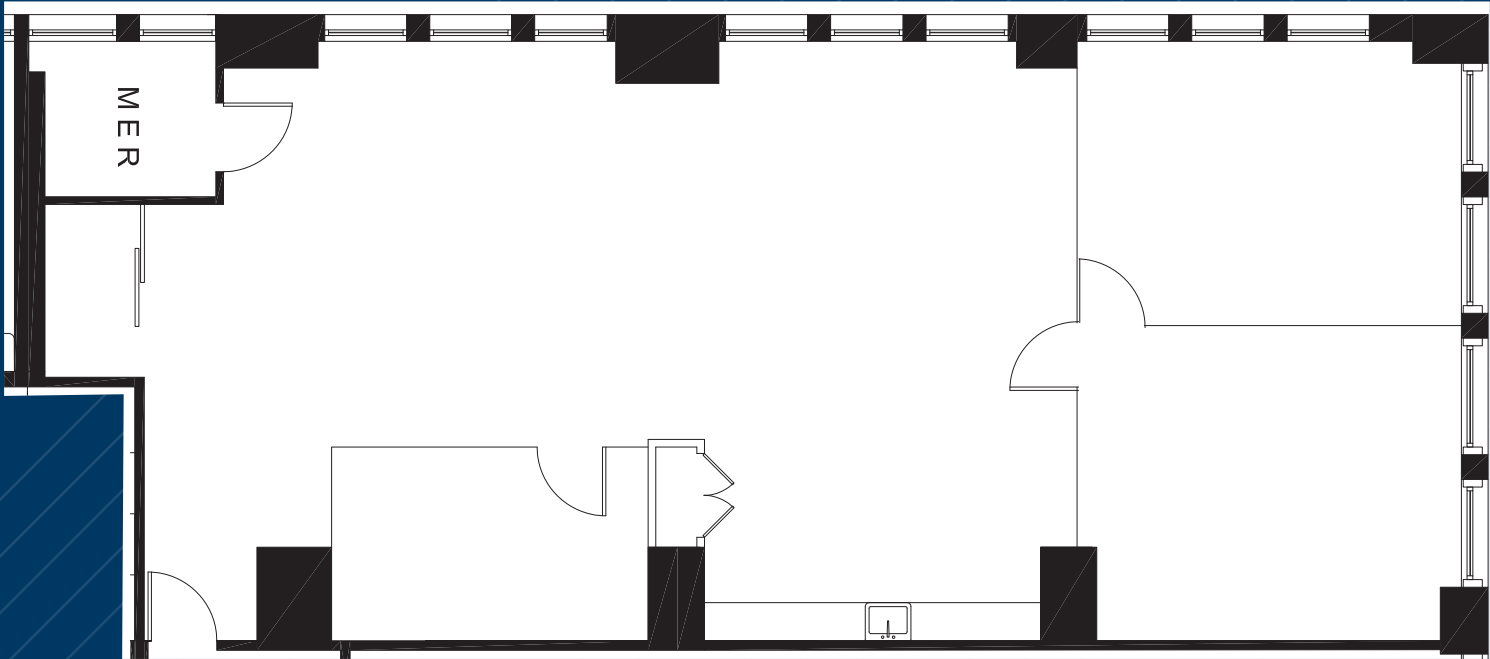
Possession: October 1, 2023

Rent: Call or email for details

- The building overlooks Union Square Park, offering tenants a burgeoning submarket full of creative tenancy
- 12'-2" Ceiling heights and tenant controlled air conditioning
- Card-key security system providing 24/7/365 access via attended lobby
- Direct access to the Union Square transportation hub's **4 5 6 L N Q R W** express and local subway lines, and vicinity of NJ  station at 23rd St/6th Ave
- Steps from the farmers market and Broadway's retail corridor offering a wide selection of shopping and dining options, fitness studios, and a myriad of other work/lifestyle benefits

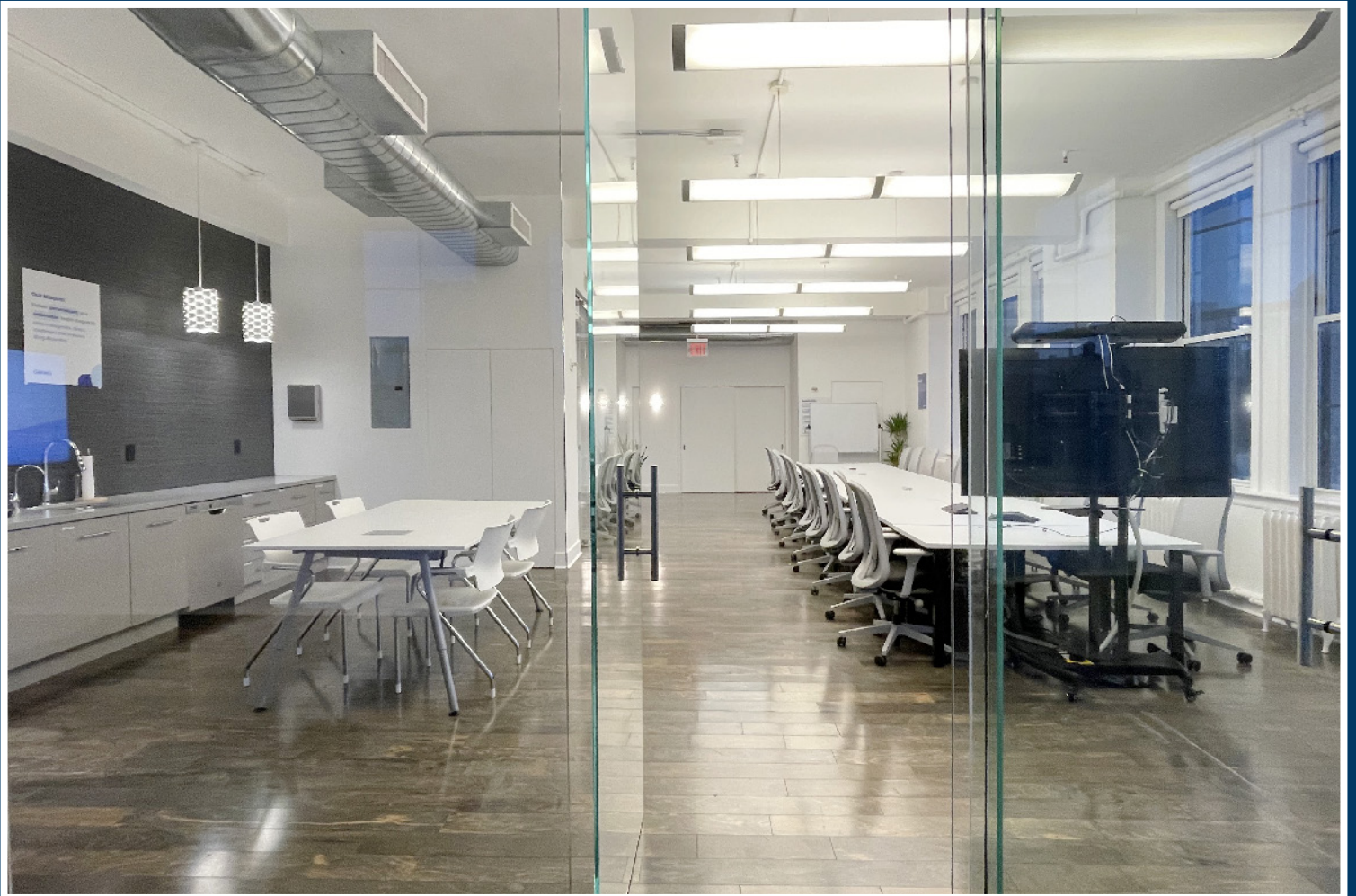
SUITE 1301 - 2,616 RSF
(AS-BUILT)

Furniture shown for layout concept only





Furniture shown for layout concept only



Furniture shown for layout concept only



CHELSEA

W 25TH ST

W 24TH ST

W 23RD ST

W 23RD ST

NJ PATH
23rd St/6th Ave
11 Mins. Walking

W 22ND ST

W 21ST ST

W 21ST ST

W 20TH ST

W 20TH ST

W 19TH ST

W 19TH ST

W 18TH ST

W 18TH ST

W 17TH ST

W 17TH ST

W 16TH ST

W 16TH ST

14th St/7th Ave
Subway Station
13 Mins. Walking

14th St/6th Ave
Subway Station
10 Mins. Walking

W 14TH ST

W 14TH ST

W 13TH ST

W 13TH ST

GREENWICH
VILLAGE

Madison
Sq. Park
7 Mins.
Walking

E 25TH ST

NOMAD

E 24TH ST

E 23RD ST

E 22ND ST

E 21ST ST

E 20TH ST

E 19TH ST

E 18TH ST

E 17TH ST

E 16TH ST

E 15TH ST

E 14TH ST

E 13TH ST

FLATIRON

200
Park Avenue
South

Union Square
Subway Station
3 Mins. Walking

Union
Square
Park

STAPLES

WHOLE
FOODS
MARKET

W
HOTELS
WORLDWIDE

1-stop / 4 min subway
ride to
Grand Central Terminal
via 4/5 express
trains at
Union Square station

4
5
6

PARK AVE S

GRAMERCY PARK W

IRVING PL

IRVING PL

IRVING PL

IRVING PL

IRVING PL

IRVING PL