

200 Park Avenue South

Northeast Corner of East 17th Street @ Union Square Park



**Corner Suite
2,643 RSF**

**South Exposure
Great Sunlight
and Park Views**

**Fantastic
Union Square
Location and
Transportation
Access**





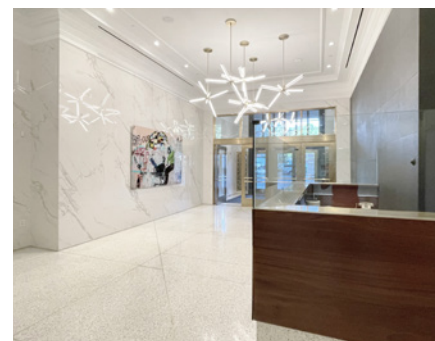
South View


Suite 1315: 2,643 rsf

- Built space with (1) conference room, (1) executive office, (1) office/breakout room, wet pantry, reception area and open area
- South and west exposure provide abundant natural light and great views of Union Square and One World Trade Center

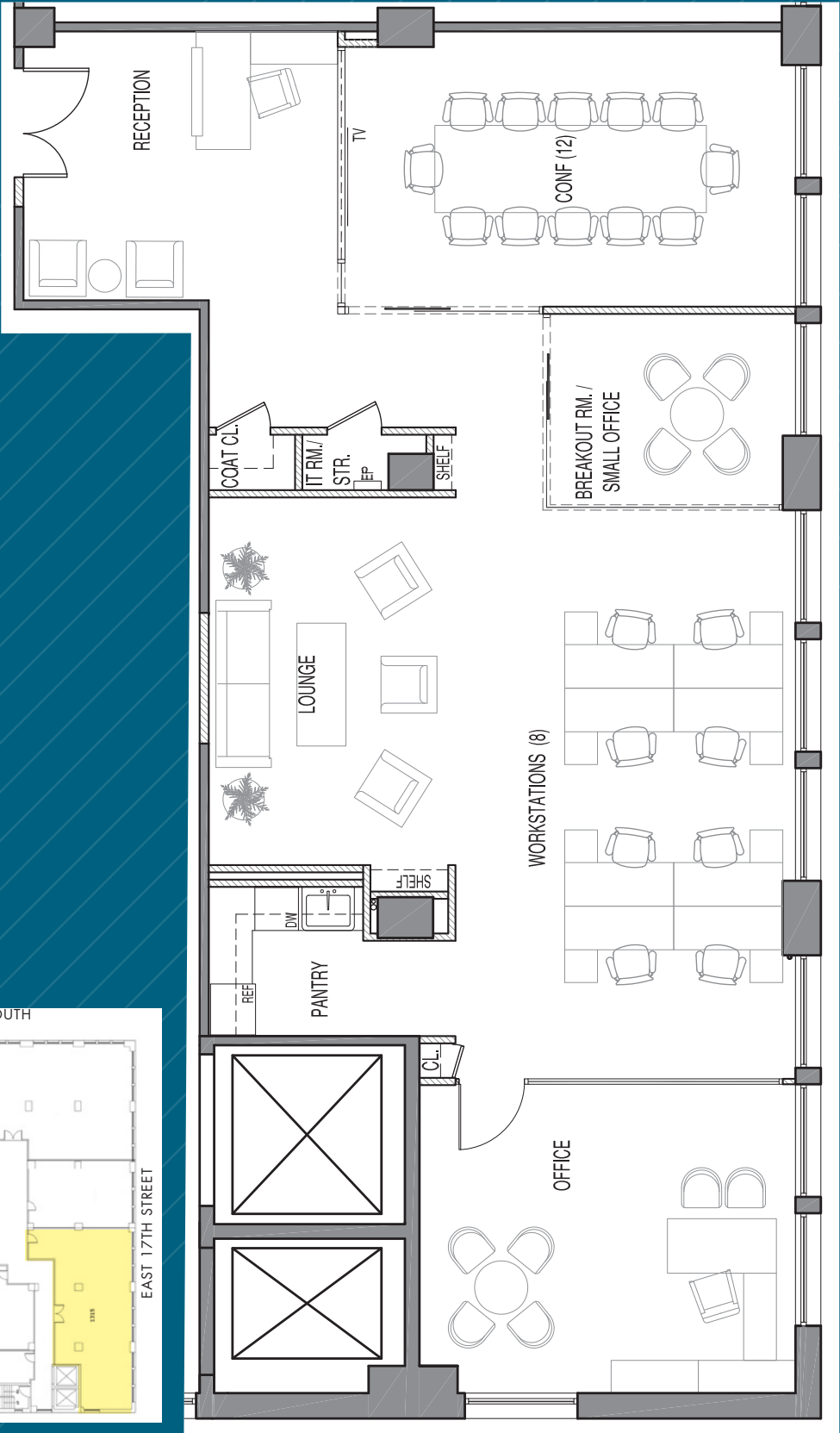
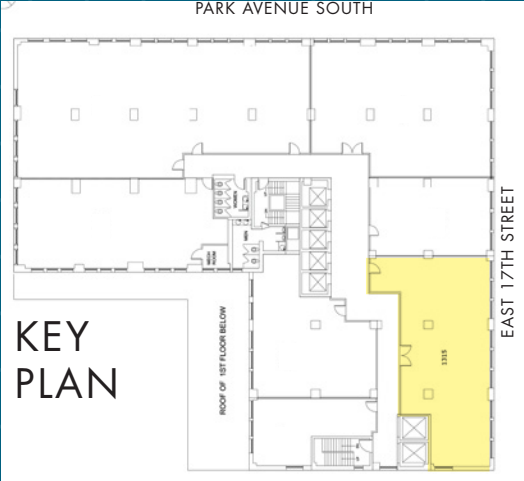
Possession: September 1, 2024

Rent: Call or email for details



- Overlooking Union Square Park, offering tenants a burgeoning submarket full of creative tenancy
- 12'-2" Ceiling heights and tenant controlled air conditioning
- Card-key security system providing 24/7/365 access via attended lobby
- Direct access to the Union Square transportation hub's **4 5 6 L N Q R W** express and local subway lines, and vicinity of NJ  station at 23rd St/6th Ave
- Steps from the farmers market and Broadway's retail corridor offering a wide selection of shopping and dining options, fitness studios, and a myriad of other work/lifestyle benefits

SUITE 1315 - 2,643 RSF
(AS-BUILT)



EAST 17TH STREET

(Floor plan for descriptive purposes only; not to scale. Furniture shown for layout concept only.)



**Madison
Sq. Park
7 Mins.
Walking**

**NJ PATH
23rd St/6th Ave
11 Mins. Walking**

**14th St/7th Ave
Subway Station
13 Mins. Walking**

**14th St/6th Ave
Subway Station
10 Mins. Walking**

**Union Square
Subway Station
3 Mins. Walking**

**1-stop / 4 min subway
ride to
Grand Central Terminal
via 4/5 express
trains at
Union Square station**