

# 20 West 20th Street

Flatiron District

Between 5th and 6th Avenue



## Fully Furnished Turn-Key Sun-Drenched Office in Flatiron District

Floor:	8th Floor, Suite 802
Size:	2,700 RSF
Possession:	Immediate
Rent:	Upon Request
Term:	2+ Years
Buildout:	2 Private Offices, 2 Large Conference Rooms, Full Kitchen, Open Area for 30 Desks, Fully Furnished, Wired for IT
Elevators:	2 Passenger, 1 Freight
Ceiling Height:	12 Feet
Exposures:	North and West
Lobby:	24/7 Attended Lobby
HVAC:	Tenant Controlled AC, Building Controlled Heat
Utilities:	Electric - Direct Meter
ISP:	Verizon Fios



### Details:

Space features loft-like ceiling heights, oak hardwood floors, bright white walls and 7 oversized North and West facing operable windows. Conveniently located near 23rd Street & Union Square subways.



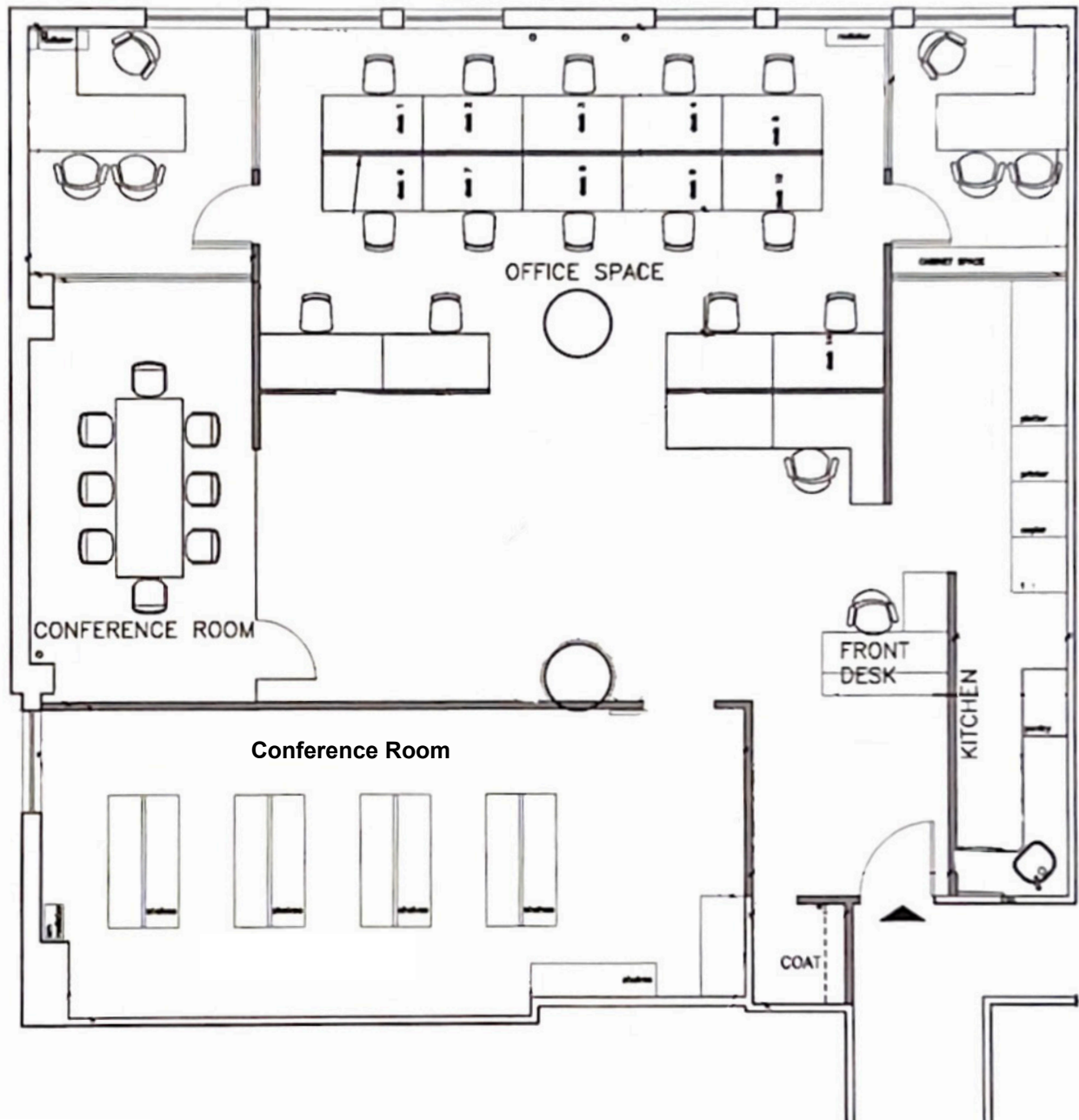




# 20 West 20th Street

*Flatiron District*

*Between 5th and 6th Avenue*





# NEIGHBORHOOD AMENITIES

The central location of the Flatiron District provides easy access to many of the city's landmarks and institutions, starting at New York Penn Station, one of the major transportation hubs for the city.

The area boasts easy access to Amtrak, Long Island Rail Road, New Jersey Transit, Buses and the MTA.

The 1, 2, 3, F, M, L, N, Q, R, W, 4, 5, and 6 subway lines can be accessed within a few blocks.

