

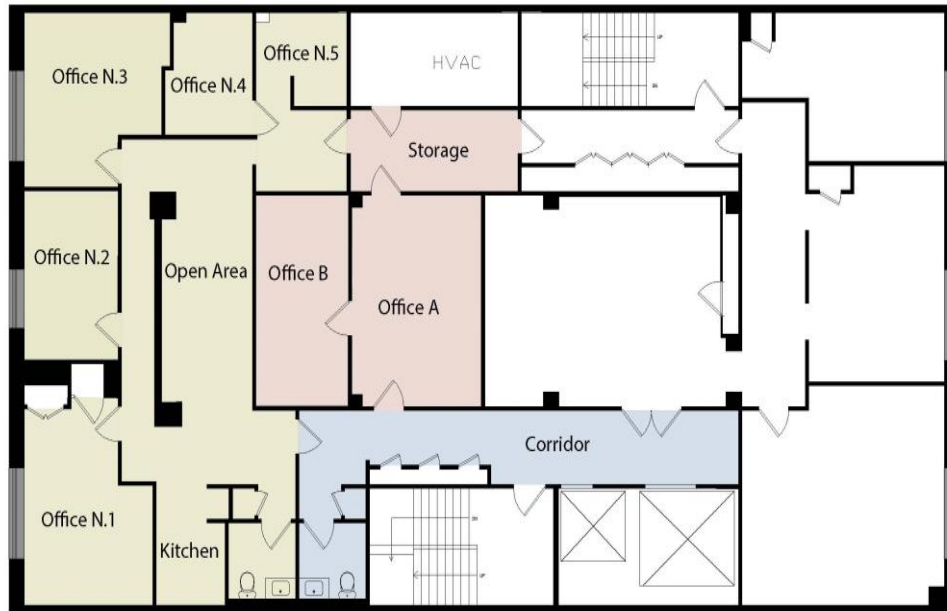


## 215 East 58<sup>th</sup> Street – Design Center

Corner of 3rd Avenue

### Luxury Showroom/Office - partial 4th floor

- 2,700 sf office/showroom on east 58<sup>th</sup> street
- Pristine and bright ample open area, 3 bright and large private offices with oversized windows and two suite/internal office. This space can also provide a unique opportunity to create a luxury contemporary, office/showroom space
- Loft style ceilings, bright, natural lights, north exposures, 3 oversized windows.
- Privacy only 2 other tenant on the floor & 24/7 access.
- Private bathrooms and kitchen and storage area
- Elegant Building specialized in home furnishings showroom/offices, decorators and design companies
- Adjacent to D&D, A&D, Fine Arts Building and Bloomberg Towers.
- Home to Waterworks new Flagship showroom



1 4th Floor Plan

# 215 East 58<sup>th</sup> Street – Design Center

Corner of 3rd Avenue

## 215 East 58th Street

- A boutique six story commercial building in prime midtown
- Beautifully designed newly renovated lobby by Waterworks
- 24/7 access building with CCTV security cameras
- 2 elevators - recently renovated
- Next to F&D, A&D and in the core of the design district
- Proximity to Park, Madison, 5<sup>th</sup> avenue, 57<sup>th</sup> street shopping areas and Bloomingdale, Easy access to several Subway lines including the 4, 5, 6, Q, N and R lines

**Premises**  
2,700 sf

**Possession**  
immediate

**Rental/SF/Yr+ Svs**  
On Request

**Electricity**  
Directly meter

**Escalation**  
3 % annual

**Taxes**  
Proportionate share over base year increase

**Security**  
Negotiable, depending on financial strength