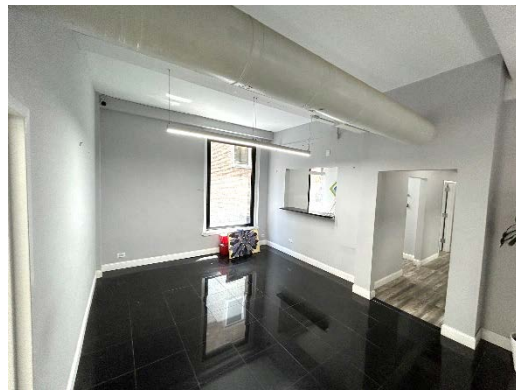


FULL FLOOR IDENTITY – For Lease

GRAND CENTRAL – BRYANT PARK

12 EAST 44th STREET (bet. Fifth & Madison Ave)

2,710 RSF FLOORS – ENTIRE 6th FL



- EXPOSED 11 FOOT CEILING
- 2 MODERNIZED PASSENGER ELEVATORS
- 24/7 ACCESS + VIDEO INTERCOM
- DIRECT ELECTRIC METER
- HIGH-SPEED INTERNET: WIREDSCORE SILVER

- 2 PRIVATE BATHROOMS
- TENANT-CONTROLLED AC
- OVERSIZED WINDOWS ON 3 SIDES
- BUILT OFFICES AND RECEPTION
- LANDLORD CAN MODIFY

Steps from Grand Central and Bryant Park, Madison & 5th Avenues' Retail
GREAT SUBWAY ACCESS: 4, 5, 6, 7, B, D, F, M, S

12 E 44th Street, 6th Floor

