

The Lipstick Building is getting a makeover



Full Floors
13,900-19,300 RSF

High-end Executive Pre-Builts
2,700 - 4,700 RSF



Opportunity Highlights

- High-end Executive Pre-Builts
2,700 - 4,700 RSF
 - Full Floors from 13,900-19,300 RSF
-
- New Lobby with Coffee Bar
 - New Elevator Cabs
 - Façade Restoration and Cleaning
 - Upgraded Landscaping
 - Wolfgang's Steakhouse On-Site
-

Immediate access to the **6** **E** and **M** trains
New institutional ownership



Instantly Recognized Around the Globe

Designed by Philip Johnson and John Burgee, 885 Third Avenue is affectionately known as The Lipstick Building. Exemplifying the quintessential Manhattan trophy office building, its stunning elliptical silhouette is instantly recognizable against the New York City skyline and around the world.



550 MADISON



885 THIRD AVENUE



SEAGRAM BUILDING

885 Third is prominent among
Philip Johnson's New York City masterpieces

And, a cornerstone in the
architecturally-distinct
53rd Street corridor

GRAND
CENTRAL

LIPSTICK
BUILDING



CITIGROUP
CENTER



SEAGRAM
BUILDING



LEVER
HOUSE



660 FIFTH



BLACK ROCK



SECOND AVE

3RD AVE

LEXINGTON AVE

PARK AVE

MADISON AVE

5TH AVE

6TH AVE

53RD ST



NEW LOBBY
Artist rendering



NEW LOBBY
Artist rendering



ÉPICERIE BOULUD

Iced Espresso	\$3.25 \$4.25	Iced Latte	\$5.00 \$5.50	Iced Matcha	\$5.25 \$5.50
Iced Americano	\$4.00 \$4.50	Iced Macchiato	\$4.50 \$4.00	Latte or Cappuccino	
Iced Coffee	\$3.75 \$4.25	Iced Cappuccino	\$5.00 \$5.50	Matcha Iced Tea	\$5.25 \$5.50
Iced Red Eye	\$4.25 \$4.75	Iced Mocha	\$5.25 \$5.75	Matcha Lemonade	\$5.25 \$5.50

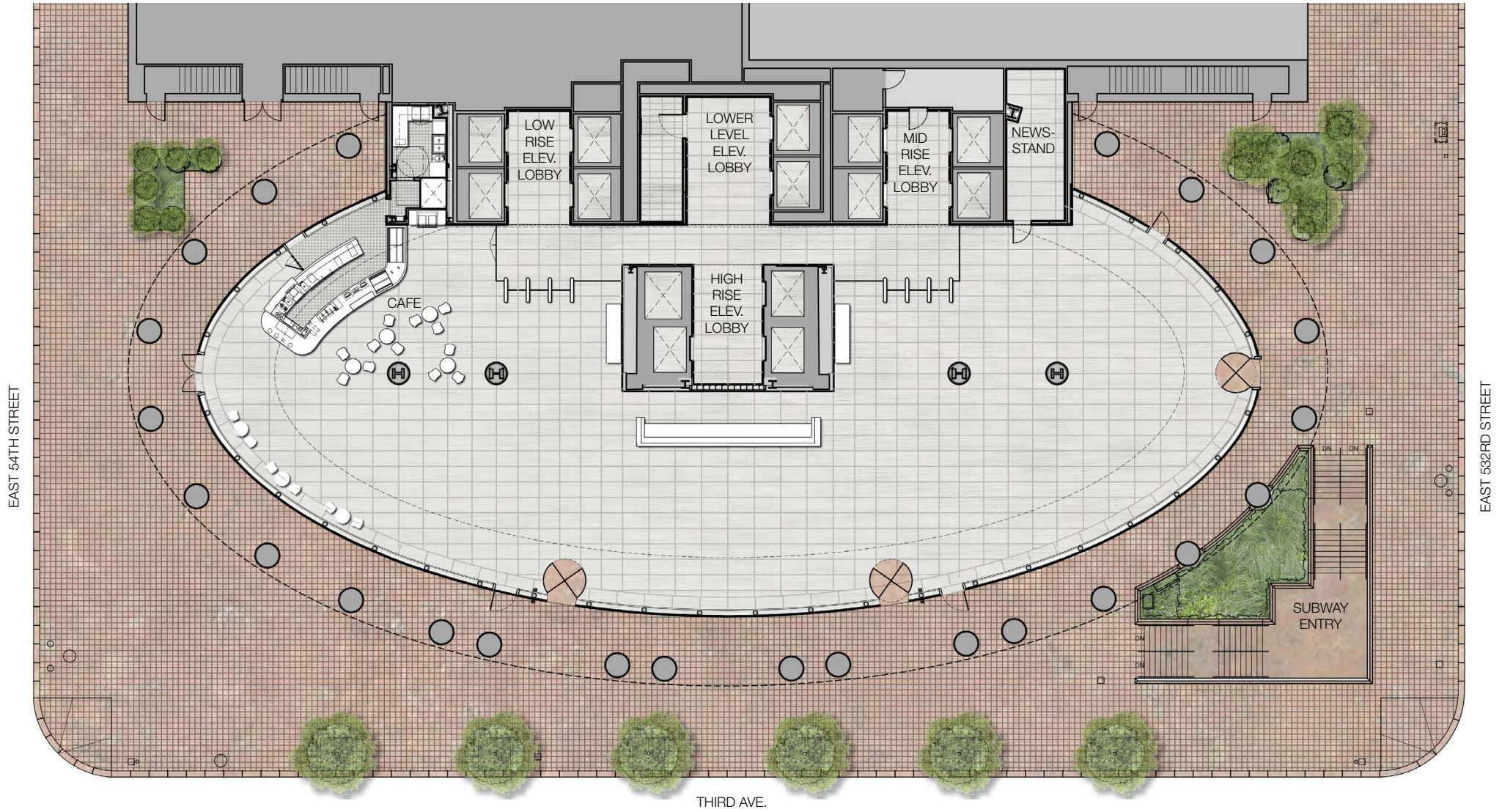
NEW LOBBY COFFEE BAR
Artist rendering



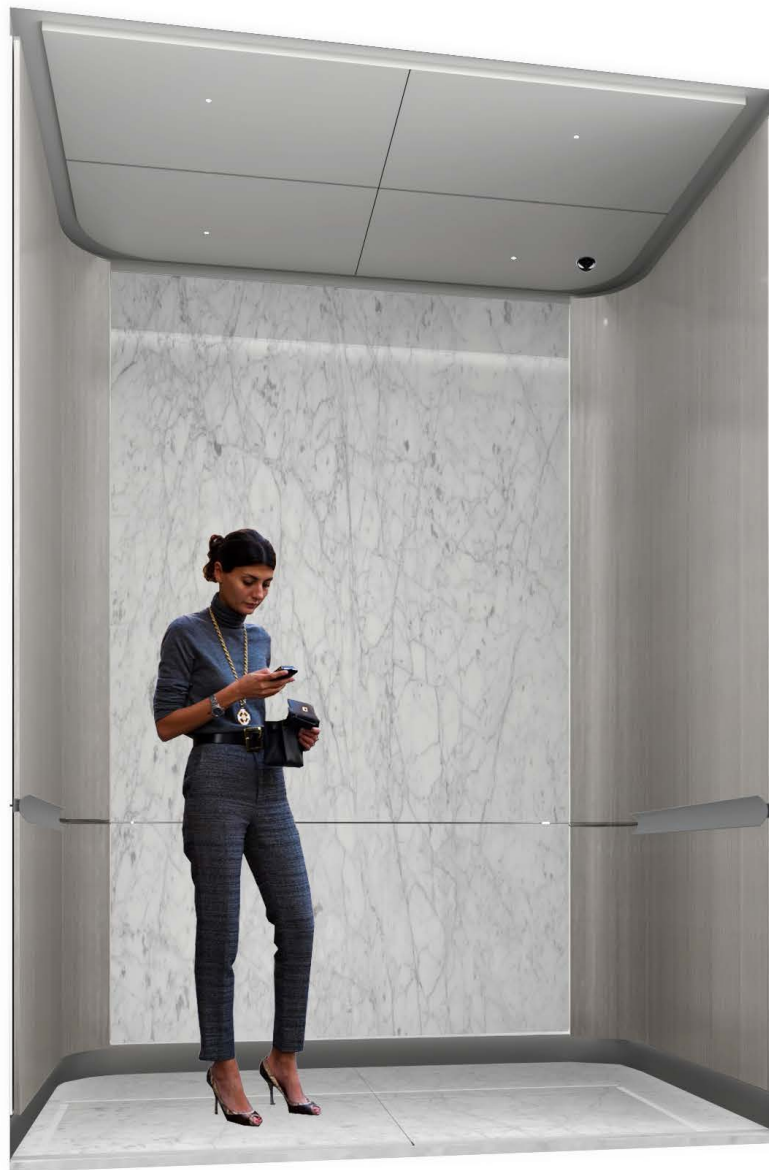
NEW LOBBY COFFEE BAR
Artist rendering



NEW LOBBY
Artist rendering



NEW LOBBY PLAN
Artist rendering



NEW ELEVATOR CABS
Artist rendering



PRE-BUILT RECEPTION

Artist rendering



PRE-BUILT OFFICE
Artist rendering



NEW PANTRY



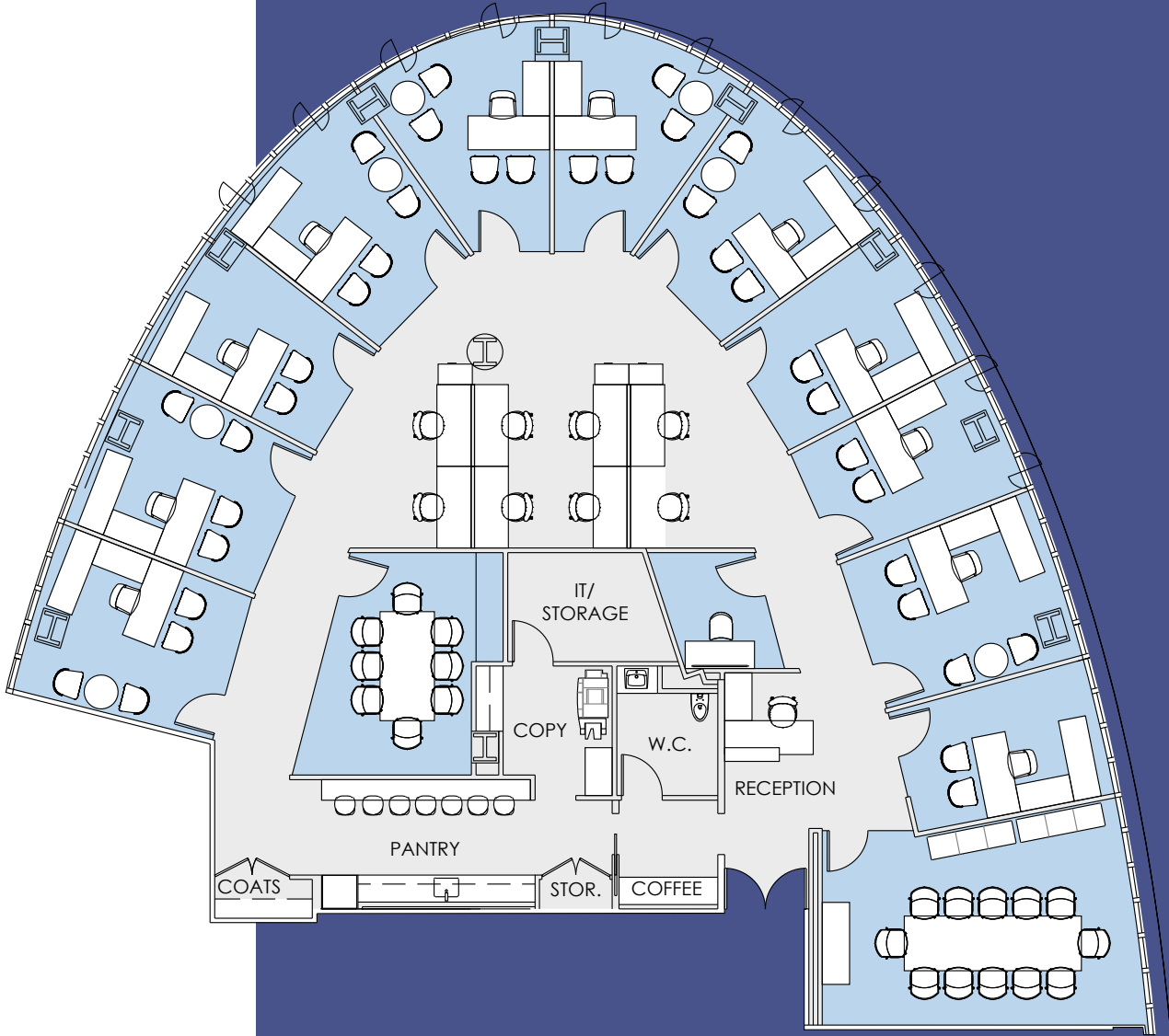
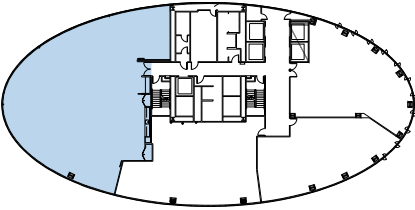
2400A

6,957 RSF

Prebuilt

Floor Key:

Offices	13
Workstations	8
Conference Rooms	2
Phone Room	1
Pantry	1
Receptionist	1
Total Personnel	20



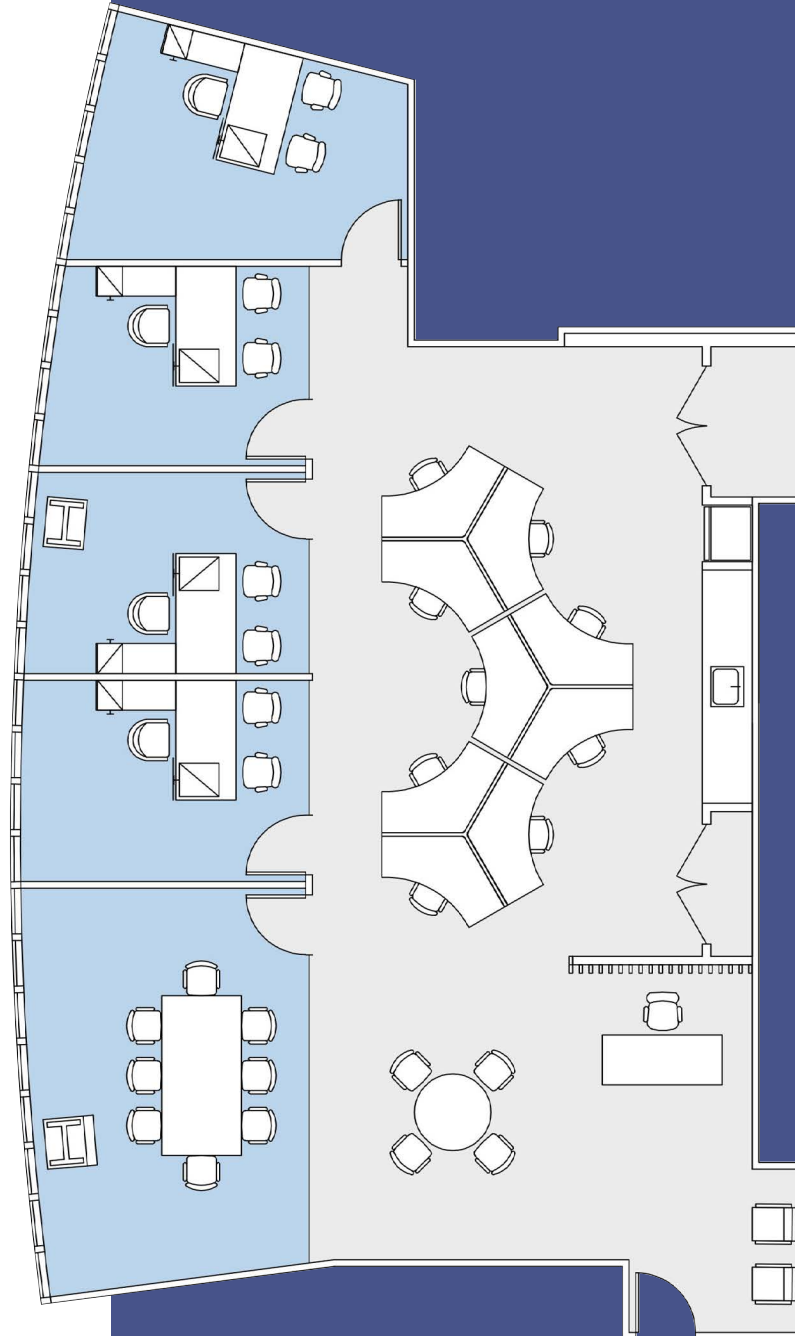
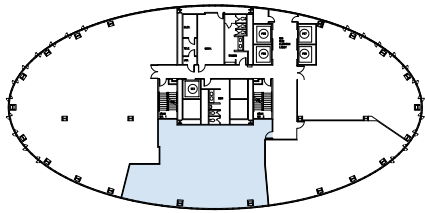
2400C

3,392 RSF

Prebuilt

Floor Key:

Offices	4
Workstations	9
Conference Rooms	1
Pantry	1
Receptionist	1
Total Personnel	14



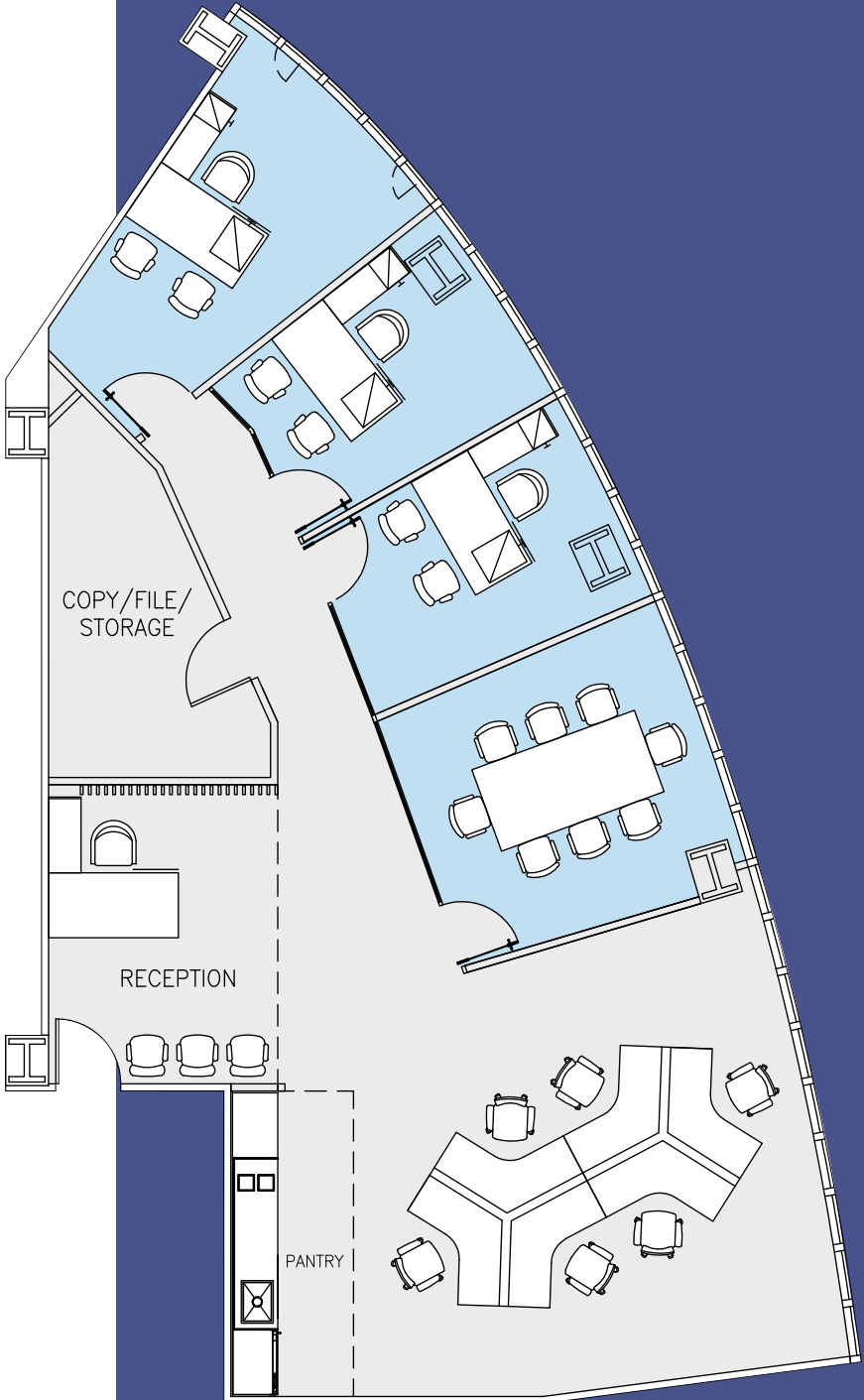
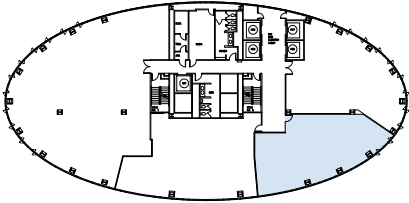
2400D

2,716 RSF

Prebuilt

Floor Key:

Offices	3
Workstations	6
Conference Rooms	1
Pantry	1
Receptionist	1
Total Personnel	10



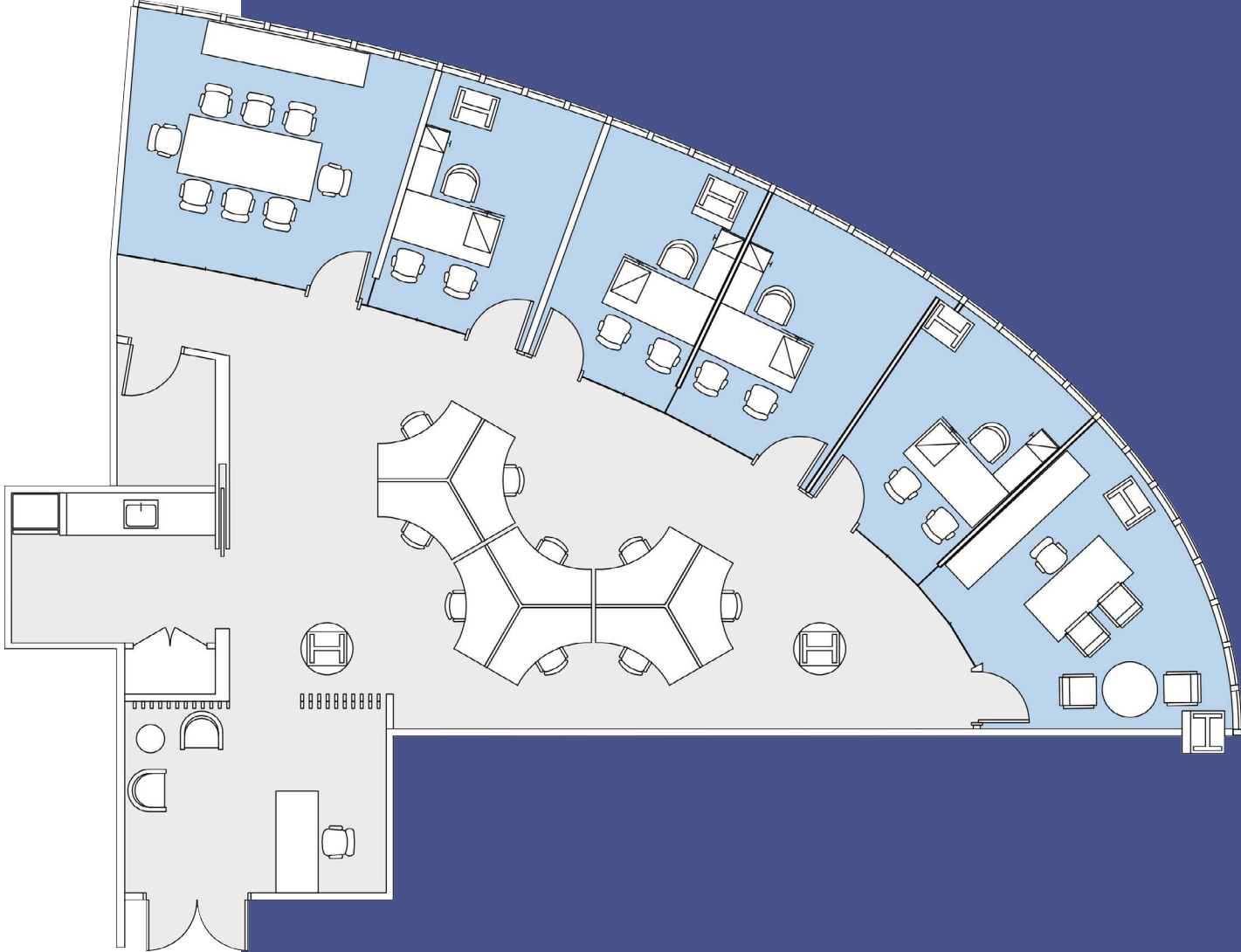
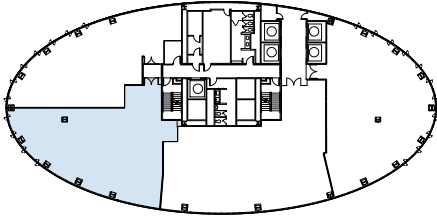
2600B

3,847 RSF

Prebuilt

Floor Key:

Offices	5
Workstations	9
Conference Rooms	1
Pantry	1
Receptionist	1
Total Personnel	15



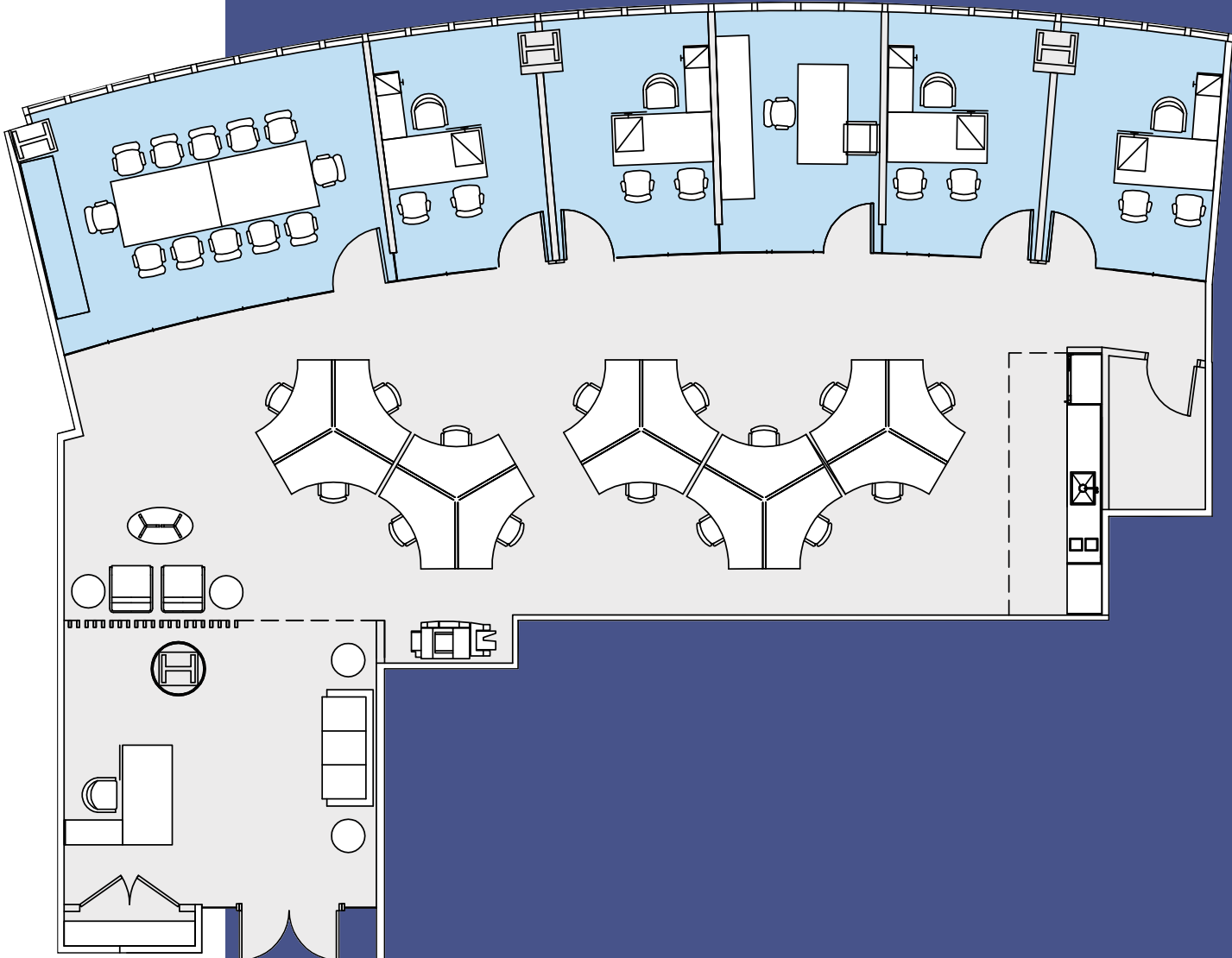
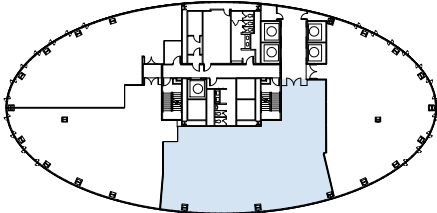
2600C

4,694 RSF

Prebuilt

Floor Key:

Offices	5
Workstations	15
Conference Rooms	1
Pantry	1
Receptionist	1
Total Personnel	21



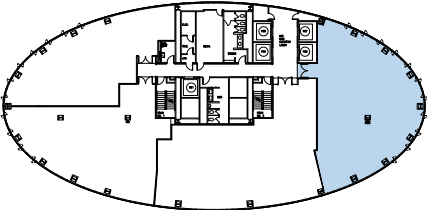
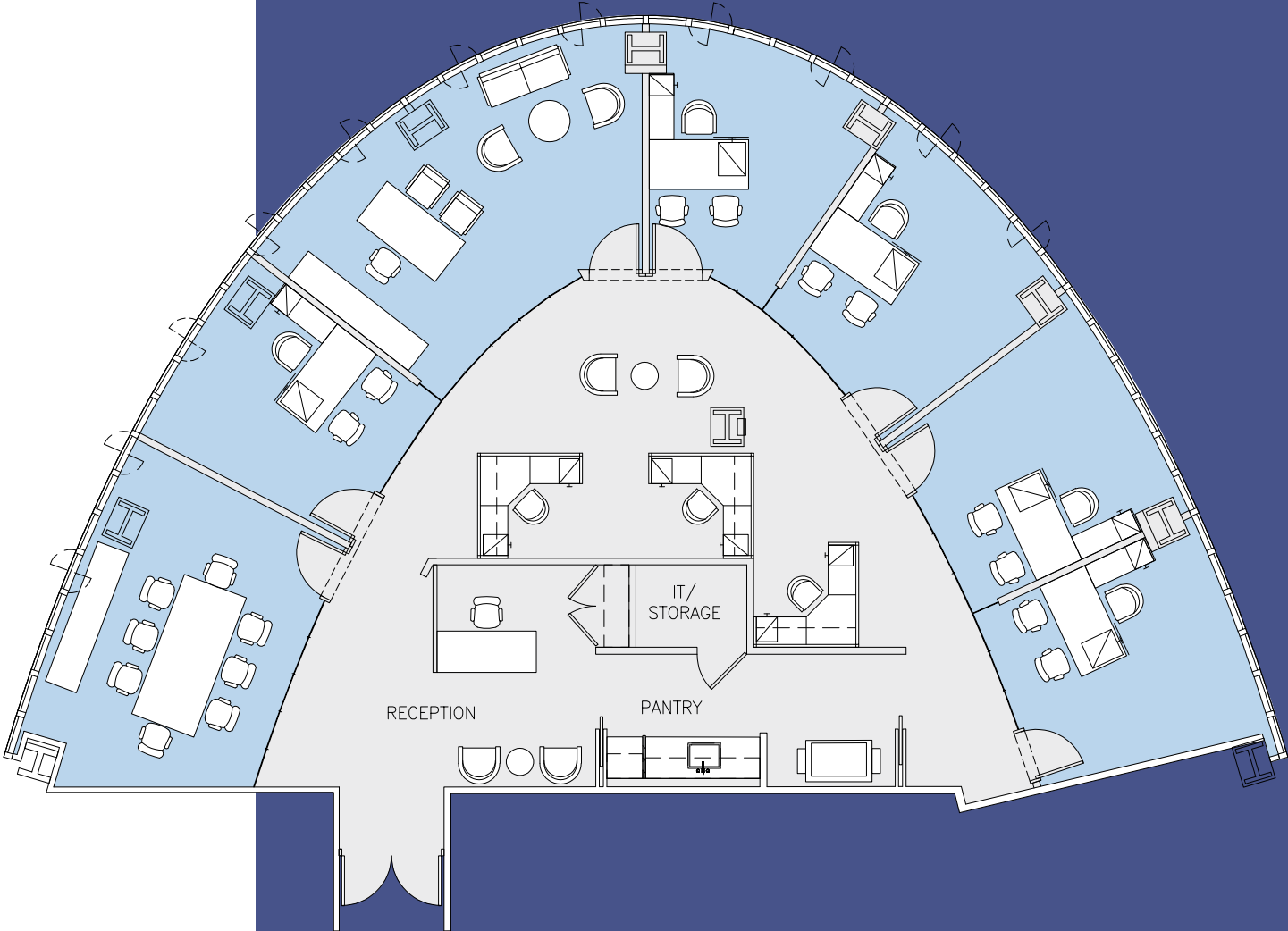
2600D

4,359 RSF

Prebuilt

Floor Key:

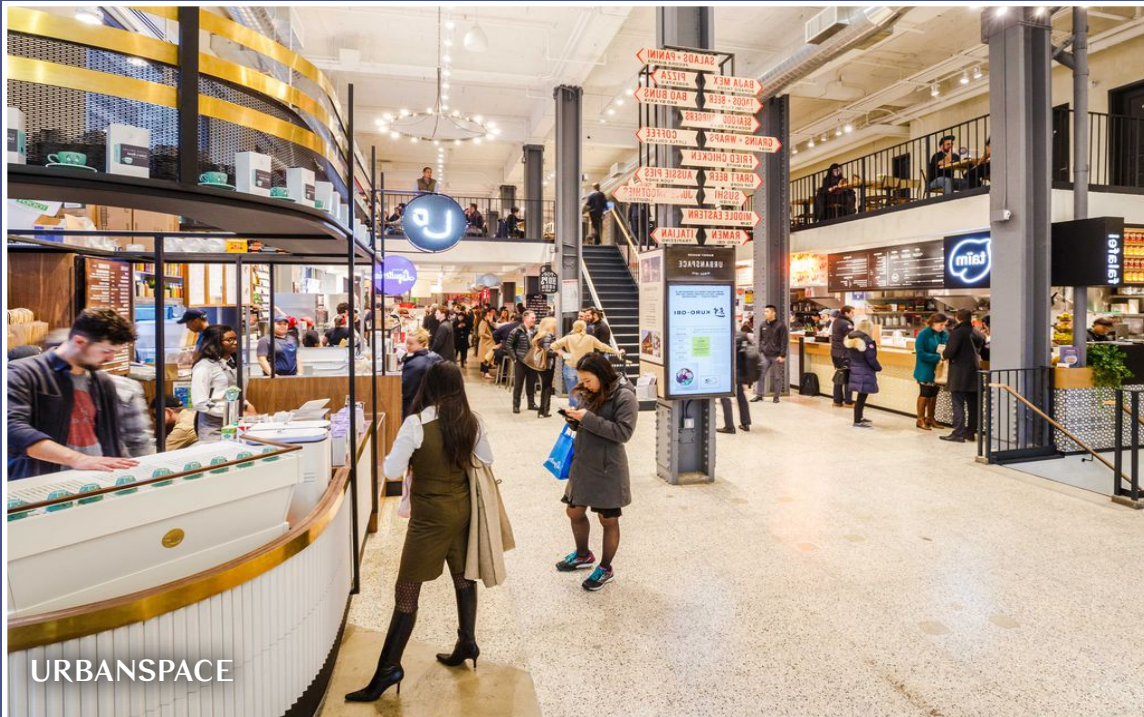
Offices	6
Workstations	3
Conference Rooms	1
Pantry	1
Receptionist	1
Total Personnel	10





Steps to Luxury
Neighborhood
Amenities





URBANSPACE



JOEL RUBUCHON'S LE JARDINIER



FOOD COURT AT CITICORP CENTER



LOBSTER CLUB



THE GRILL

Exceptional Transit-Centric Location

885 Third sits on top of an entrance to Lexington Ave/53rd Street Station, providing direct access to the E, M, and 6 trains

