

236 W 30th Street

Between 7th & 8th Avenue

Suit 602 - 2,800 SF

- 3 Offices/Conference rooms and Large Open Area
- 2 Private Bathrooms and Wet Pantry
- Operable Windows On All Three Sides
- Good Natural Light
- 11' Ceilings + Polished Concrete Floors
- 24/7 Tenant-controlled AC
- 200 amps 3 phase power

BUILDING FEATURES

- **New Landscaped Roof Deck with Wi-Fi**
- Two Passenger Elevators and Freight Elevator
- Elegant Marble Lobby
- Wired with Verizon FIOS, Pilot Fiber, LightPath and Lumen
- Advanced Access Control System
- On-site management and well maintained building
- 98 Energy Efficiency Rating
- USPS, UPS and FedEx within a block
- WALK SCORE ® - TRANSIT SCORE ® - TRANSIT SCORE ® is 100
- Near Transit Hubs:

Penn Station, Moynihan Station, Herald Square



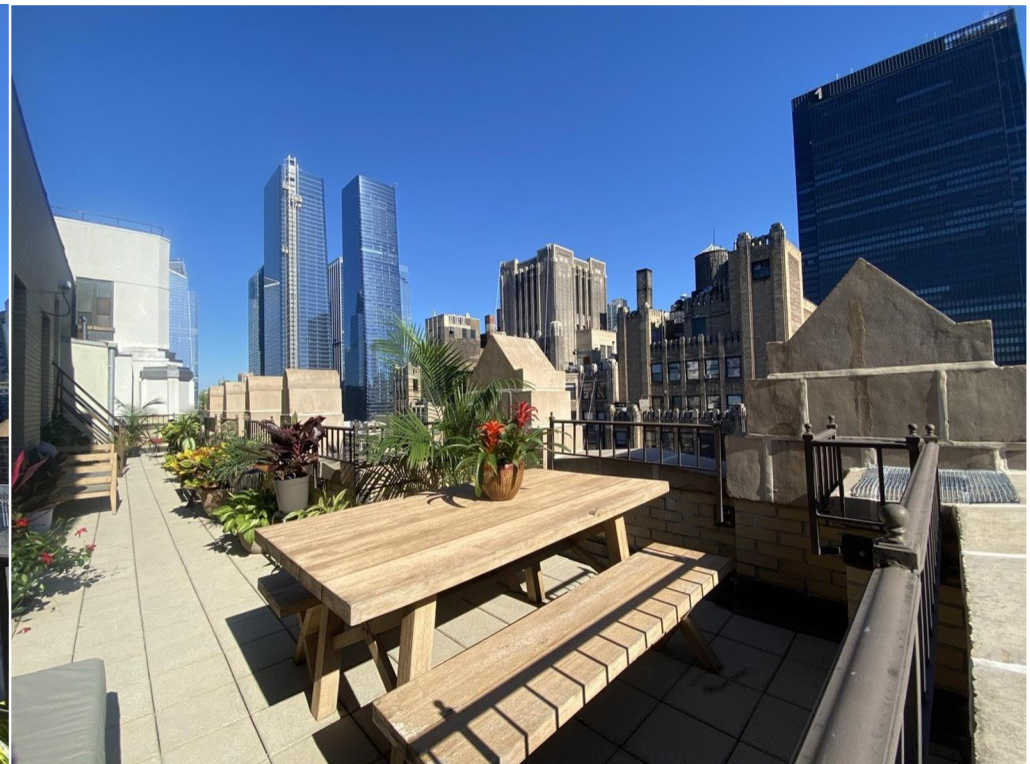


LANDSCAPED ROOFDECK

Brand New Amenity for Spring 2023

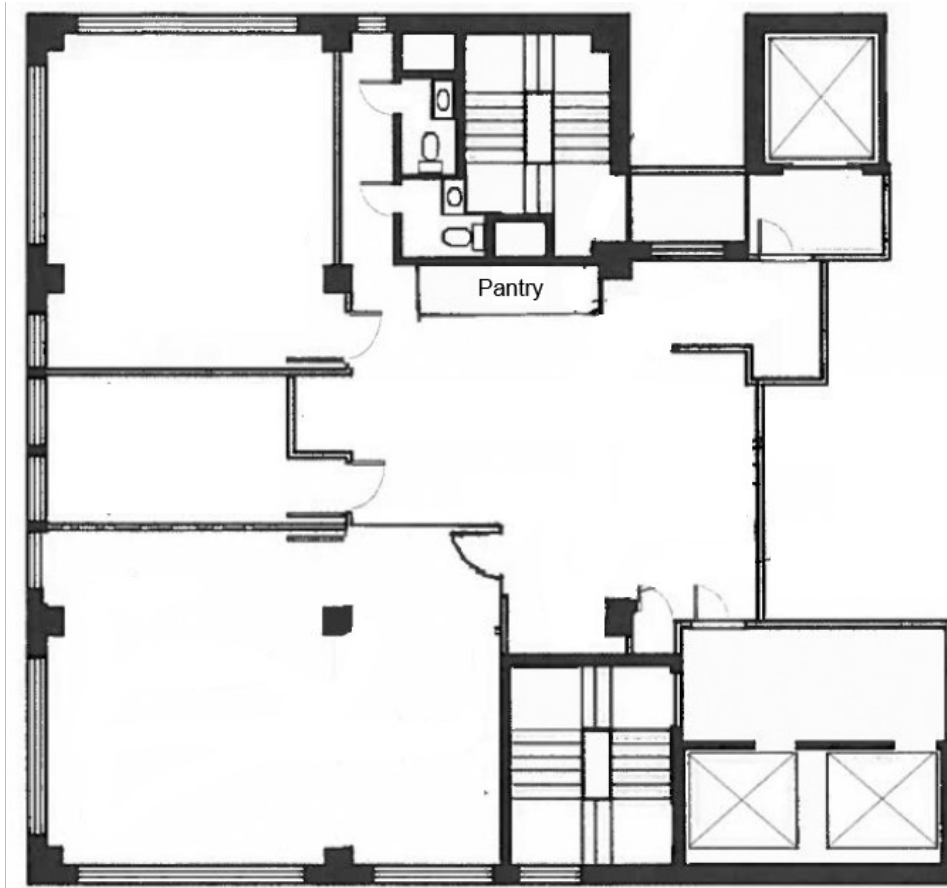
Sweeping City Views

Wi-Fi



Suite 602

Current Layout



Optional Layout (*additional room*)



