

# MEDICAL OFFICE

## FOR SUBLEASE

PRICE  
SIZE  
TERM  
POSSESSION

INQUIRE  
2,894+/- RSF  
7 YEARS  
IMMEDIATE



**317 EAST 34TH STREET, SUITE 901**  
BETWEEN 1ST AND 2ND AVENUE





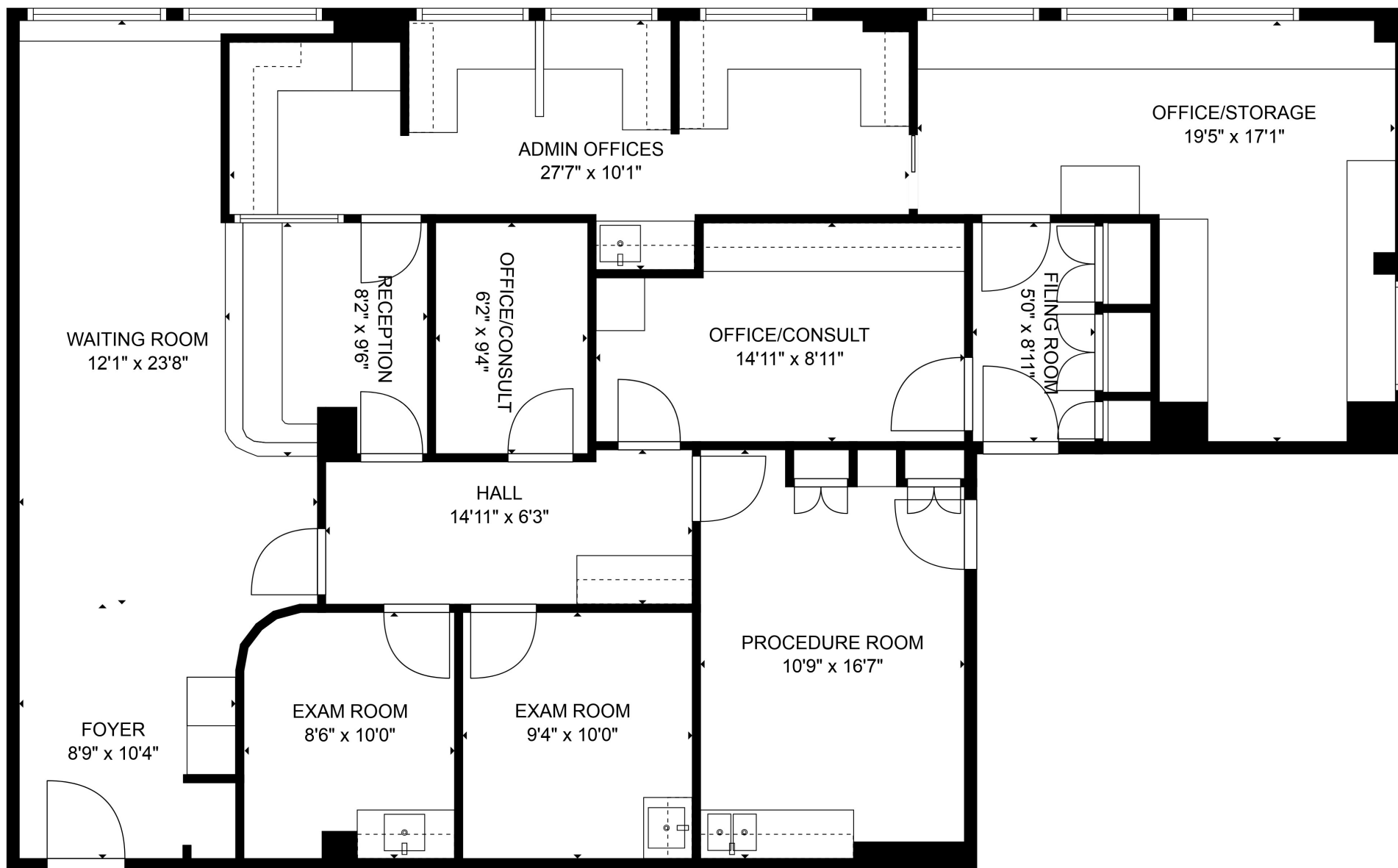
## LAYOUT

- WAITING ROOM
- RECEPTION
- 2 EXAM ROOMS
- 1 PROCEDURE ROOM
- 2 CONSULTS/OFFICES
- OPEN ADMINISTRATIVE AREAS
- FILING ROOM
- LARGE STORAGE/OFFICE

## ADDITIONAL FEATURES

- SECONDARY STAFF ENTRANCE
- ADDITIONAL EGRESS
- 9 WINDOWS
- MULTI-ZONE CENTRAL AIR CONDITIONING
- ADAPTABLE TO ANY MEDICAL SPECIALTY





FLOOR PLAN FOR ILLUSTRATIVE PURPOSES ONLY