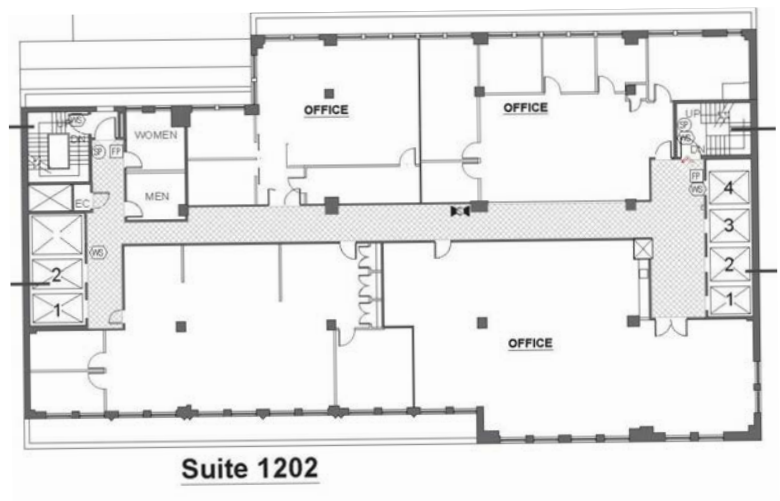
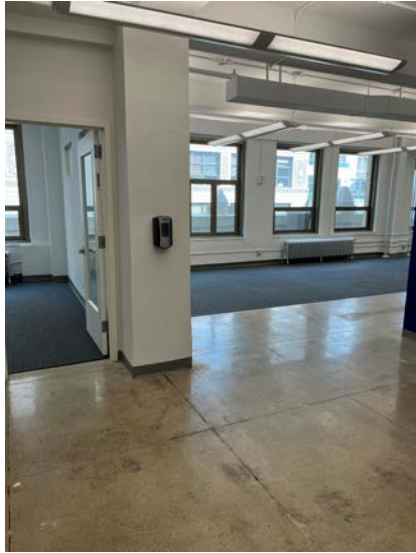


# The Best of Chelsea

150 West 30th Street (between 6th and 7th Avenues)

## Suite 1202

- 2,922 rentable sq ft
- Front facing unit with two offices, conference room, wet pantry. Large open area.



## About the Property

Upgraded Lobby and Elevators  
24 hour/7day Lobby Attendant  
Full Staff  
6 elevators (4 passenger, 2 freight)  
Great Tenant Roster  
Just off Seventh Avenue, steps from Penn  
Station, close to Herald Square Subways  
and Path

## Terms

- Possession: Immediate
- Rent: Negotiable
- Landlord will modify/upgrade
- Electric submetered
- Tenant controlled air cooled a/c