

PARK AVENUE PERFECTION

Park Avenue Tower



Space Profile

Entire 5th Floor: **21,178 sf**

Rate: **Upon request**

Availability: **Immediate**

Term: **Through 11/2035**

Key Highlights

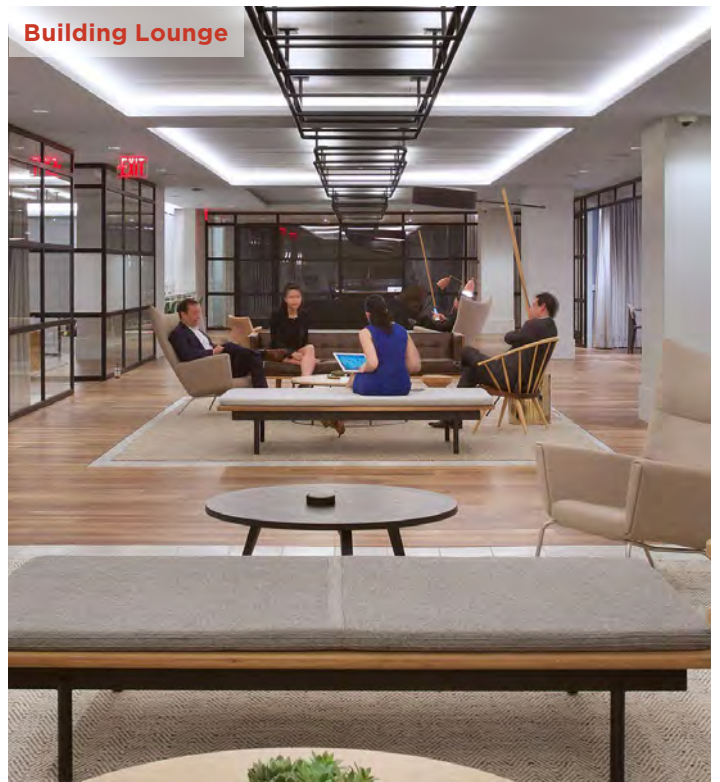
- Newly-built modern financial services installation with exposed ceilings and primarily open space
- Institutional Sublandlord and Landlord
- Class “A” building with newly-installed amenities including: fitness center, meeting facilities, coffee bar, pool room and lounge space
- Dramatic interconnecting stairs and slab cuts between all three floors



SUBLEASE 65 East 55th Street, New York, NY 10022 | Between Park & Madison Avenues



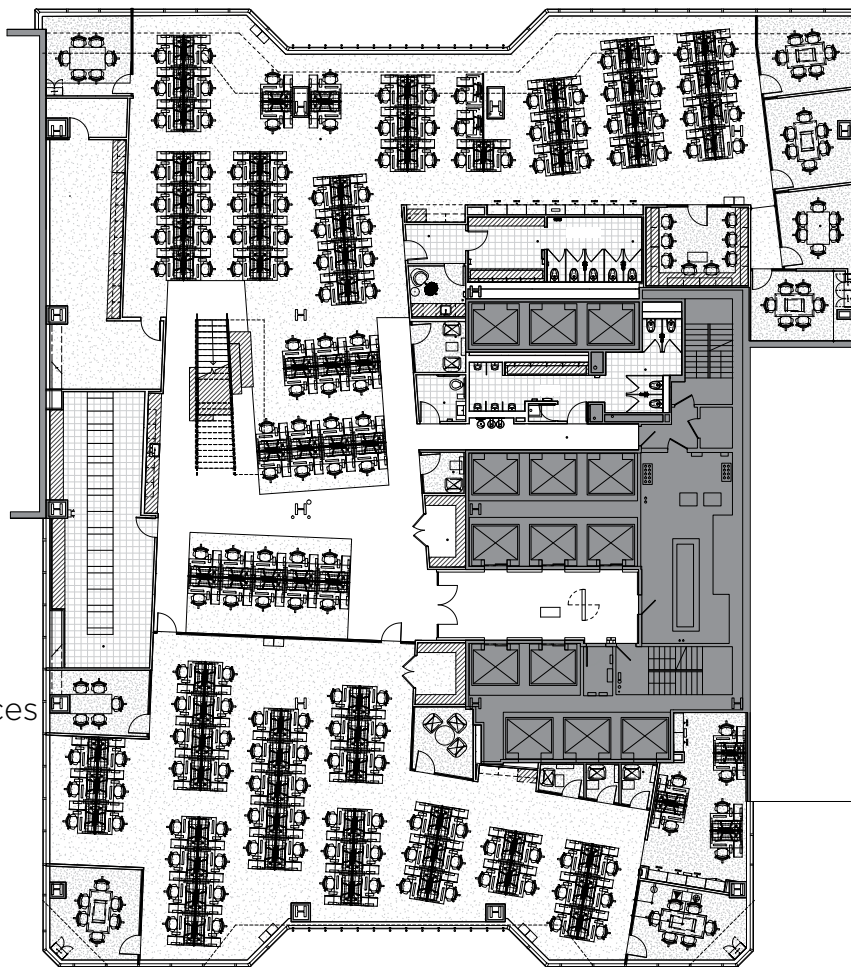
SUBLEASE 65 East 55th Street, New York, NY 10022 | Between Park & Madison Avenues



SUBLEASE 65 East 55th Street, New York, NY 10022 | Between Park & Madison Avenues

Entire 5th Floor

21,178 sf



Space Overview

150 workstations

8 meeting rooms/offices

2 conference rooms

Pantry