



For Sublease

3 Columbus Circle

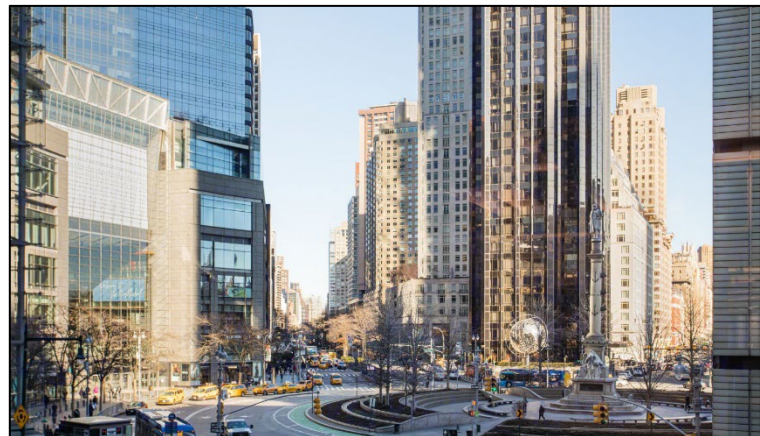
Up to 339,132 SF Available | Term through 7/30/2033

3 Columbus Circle
New York, NY

Plug and Play Opportunity

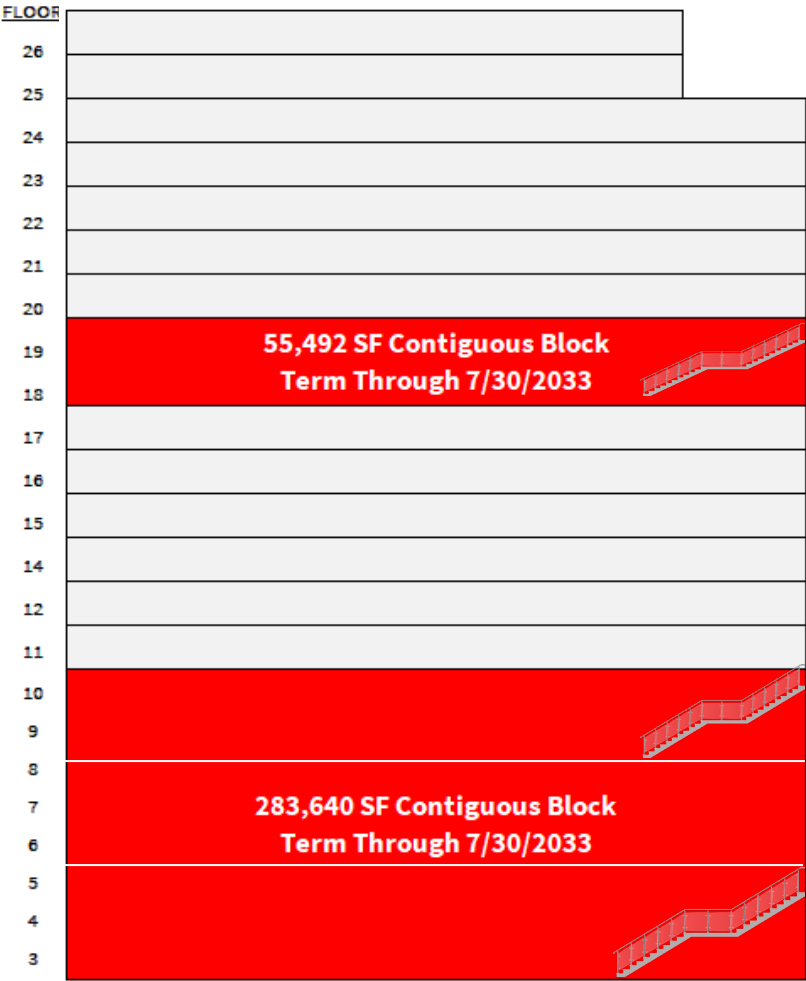
- Fully built and furnished creative space with **Central Park views**
- Opportunities **ranging from 20,000 SF to 340,000 SF**
- **35,000 SF full floors** with 160 – 200 workstations per floor
- Exclusive Tenant amenity areas including multiple large **outdoor terraces, private conferencing center with all-hands space for 150+ people and a large cafeteria**
- Institutional ownership; substantial recent building upgrades, including a Gensler designed lobby
- Less than 3-minute walk to **A C B D N Q R W 1**

3 Columbus Circle



Sublease Offering

OPPORTUNITIES RANGING FROM 20,000 SF 340,000 SF



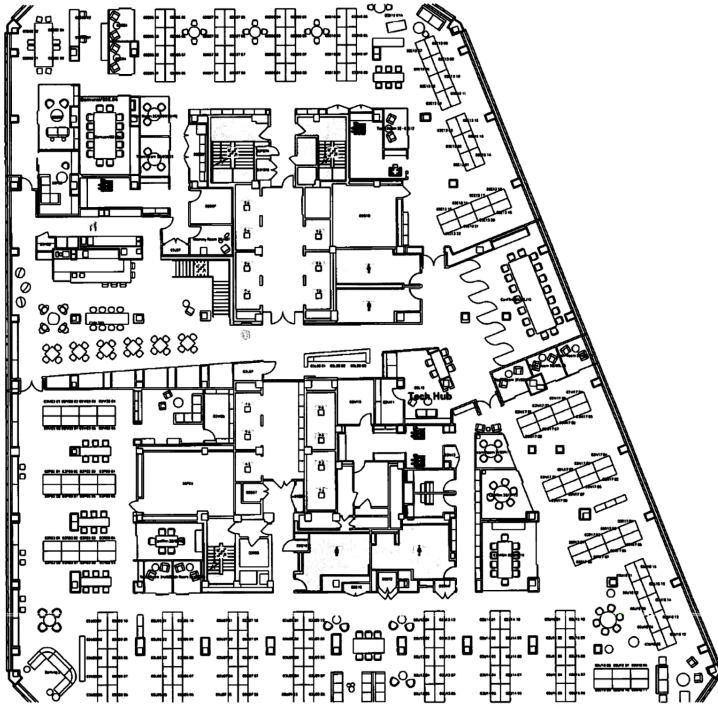
Interconnected staircase: **55K SF block**

Interconnected staircase: **70K SF block**

Interconnected staircase: **110K SF block**

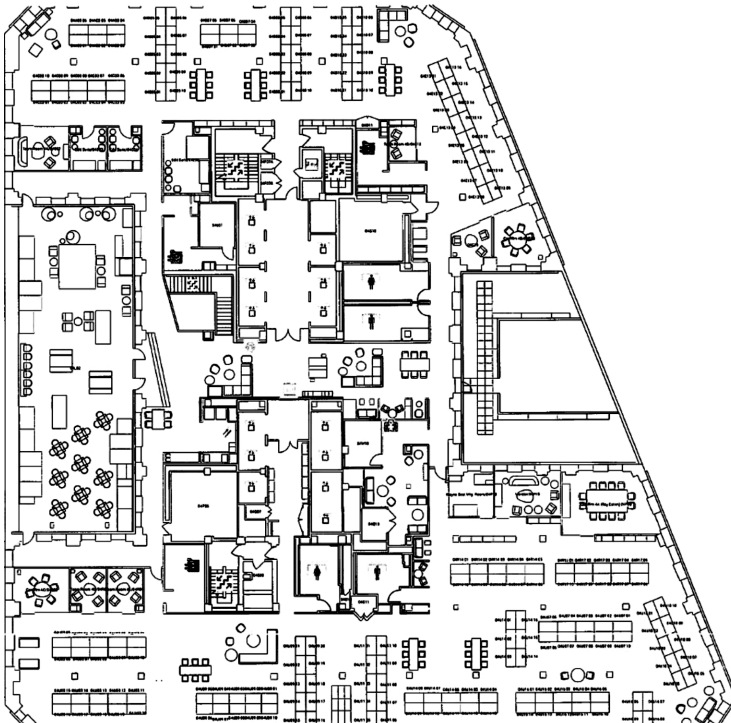
Floor 3	41,202 SF	194 workstations	13 offices	6 conference rooms
Floor 4	34,634 SF	187 workstations	5 offices	4 conference rooms
Floor 5	34,634 SF	198 workstations	10 offices	4 conference rooms
Floor 6	34,634 SF	196 workstations	10 offices	4 conference rooms
Floor 7	34,634 SF	161 workstations	9 offices	5 conference rooms
Floor 8	34,634 SF	158 workstations	12 offices	4 conference rooms
Floor 9	34,634 SF	184 workstations	12 offices	6 conference rooms
Floor 10	34,634 SF	190 workstations	8 offices	7 conference rooms
Floor 18	34,177 SF	104 workstations	9 offices	11 conference rooms
Floor 19	21,315 SF	-	6 offices	9 conference rooms

Floorplans



3rd Floor

Floor offers stunning views of Columbus Circle through its floor-to-ceiling glass windows and has a large cafeteria-style café. The space features 194 workstations, 13 offices/team rooms, and 6 conference rooms. This floor has an interconnecting staircase to the 4th and 5th floors.



4th Floor

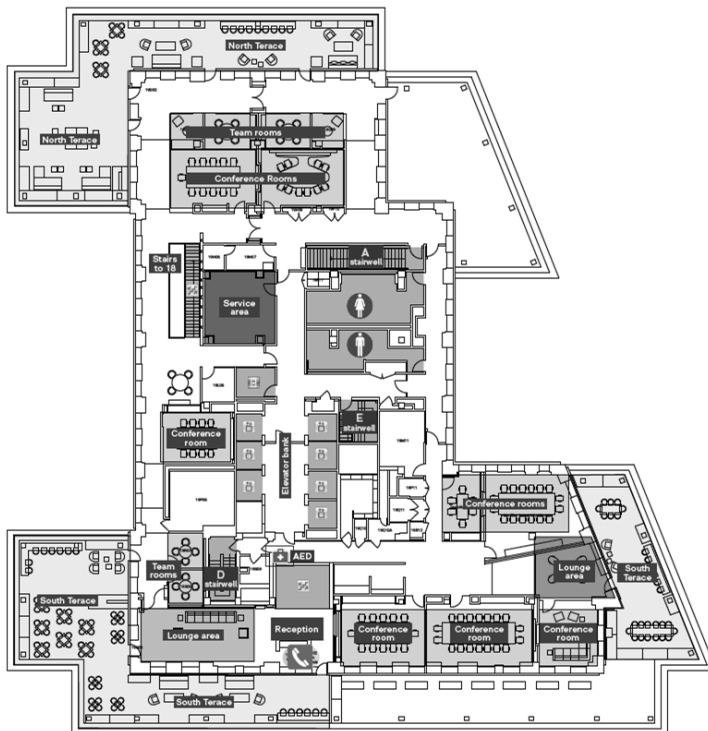
Floor boasts a large, furnished outdoor terrace offering prime West-facing views and accommodates 187 workstations, 5 offices/team rooms, and 4 conference rooms. This floor has interconnecting stairs to the 3rd and 5th floors.

Floorplans



10th Floor

The floor is designed with an open-style concept, offering top-tier views of Central Park. It features interconnected stairs leading to the 9th floor and provides 190 workstations, 8 offices/team rooms, 7 conference rooms, and a lounge-style breakout area.



19th Floor

The floor is designed in a conference and event-space style, featuring 6 offices/team rooms, 9 conference rooms, and 2 lounge areas. Space includes three large furnished outdoor terraces with magnificent views. Interconnecting stairs connecting to the 18th floor below.









