

423

W55TH

OFFICE SPACES

AVAILABLE IN MIDTOWN WEST



PRIVATE
LOBBY
& ENTRY

SPACE DETAILS

AVAILABILITIES - 89,593 RSF Block

*Possibility of additional floors

Entire 5th Floor

25,000 RSF

Entire 4th Floor

25,000 RSF

Entire 3rd Floor

25,000 RSF

POSSESSION

Immediate

TERM

Negotiable

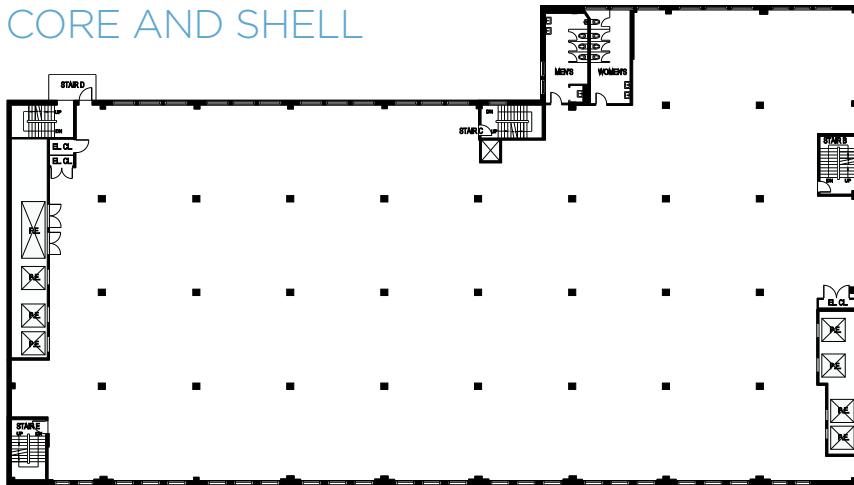
COMMENTS

- Building-within-a-building or can be leased as individual floors - flexible configurations
- Private entrance for large tenant



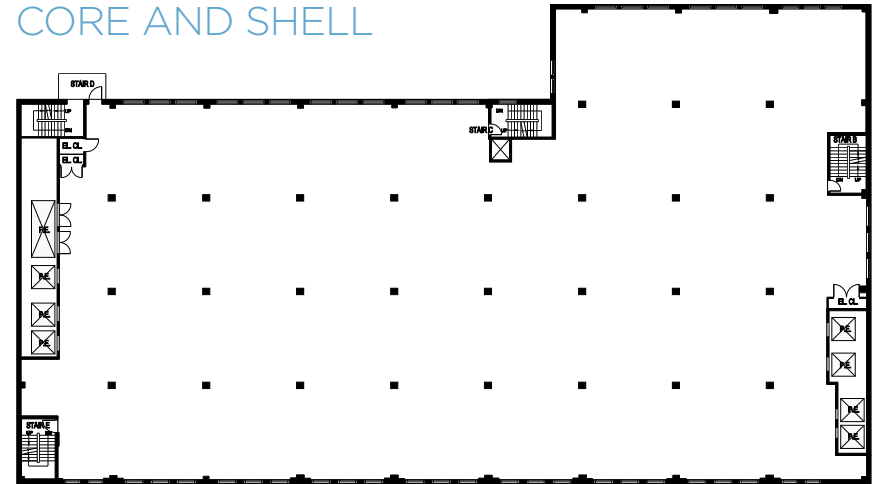
FLOOR PLANS

5TH FLOOR
CORE AND SHELL

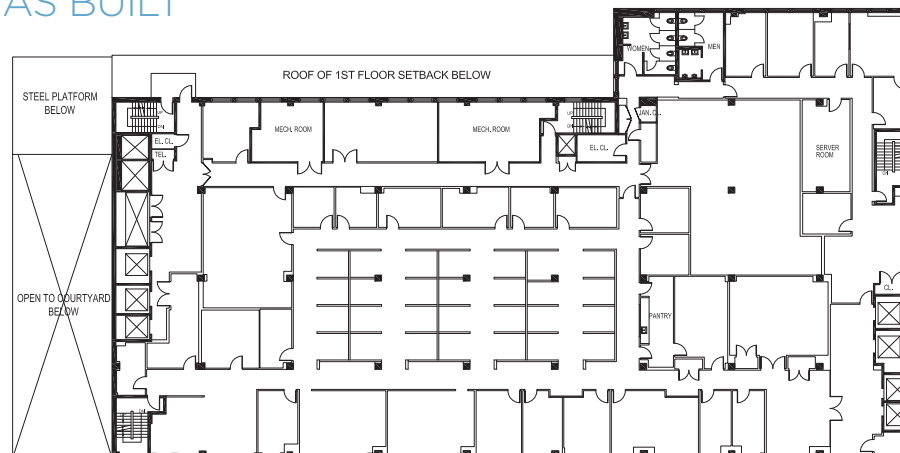


West 55th Street

4TH FLOOR
CORE AND SHELL



3RD FLOOR
AS BUILT



MIDTOWN WEST



**22K
RESIDENTS**

within a
10 minute walk

**65K
EMPLOYEES**

within a
10 minute walk

**7 MINUTE
WALK TO**

the Time Warner Center
at Columbus Circle

**10 MINUTE
WALK TO**

Lincoln
Center

**15 MINUTE
WALK TO**

Times
Square

**16M ANNUAL
VISITORS TO**

the Time
Warner Center

**6.5M ANNUAL
VISITORS TO**

to Lincoln
Center



423 W55TH

