

# 675 AVE OF THE AMERICAS

OPEN LOFT SPACE FOR SUBLEASE  
50K FLOORS IN MIDTOWN SOUTH





# 675 AVE OF THE AMERICAS

Between 21st and 22nd Streets

---

AVAILABILITY

**PARTIAL 3RD FLOOR – 28,687 RSF**

ASKING RENT  
UPON REQUEST

POSSESSION  
IMMEDIATE

TERM  
THROUGH AUGUST 2032

## SPACE FEATURES

- 19 FT Ceilings
- Abundance of natural light
- Interconnected by a grand staircase
- All FF&E can be included
- Exclusive access to a highly improved roof deck of 14,958 usable SF







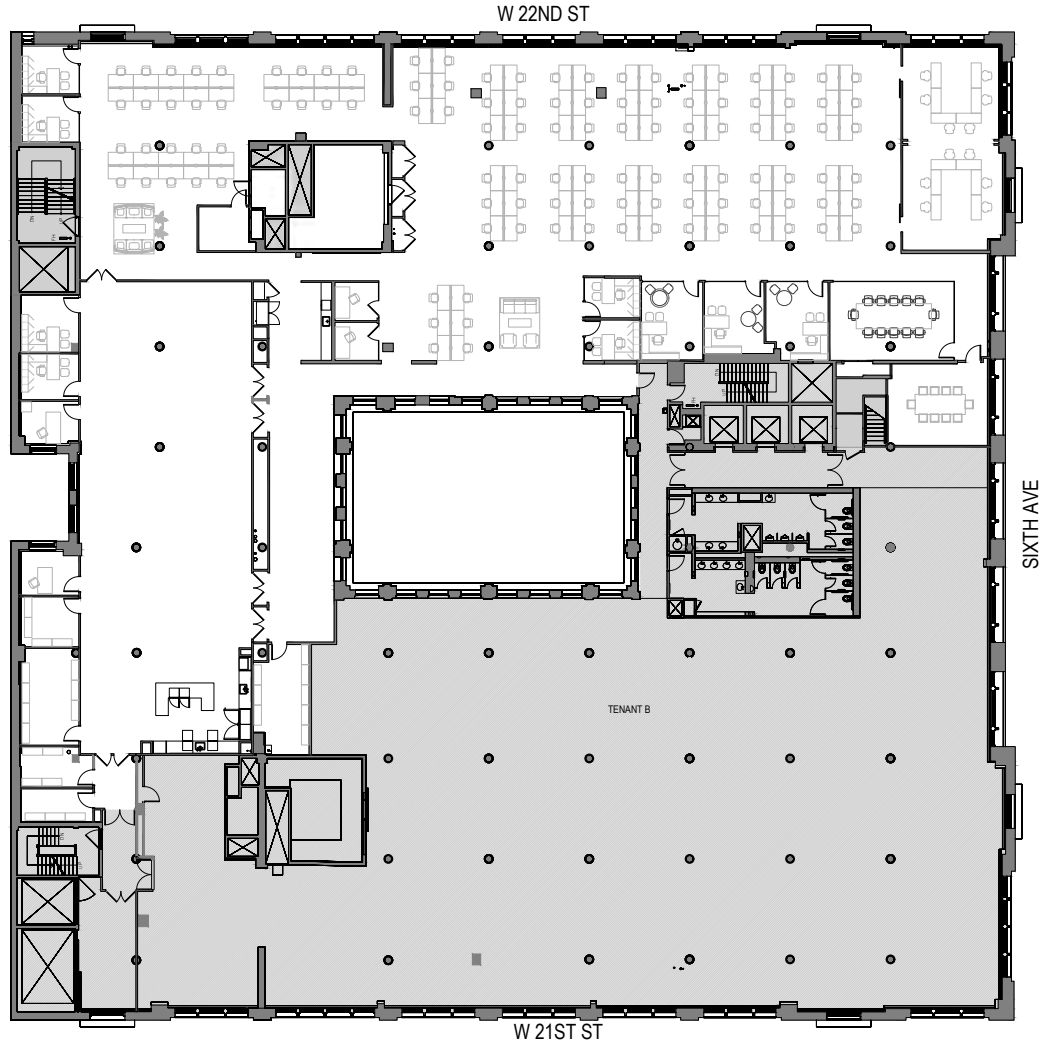
## BUILDING FEATURES

- 24 hour / 7 day access
- New HVAC system
- One block to PATH and FM subways
  - Bus stop outside main lobby door

# PARTIAL 3RD FLOOR

**28,687 RSF**

-   
**4**  
Conference Rooms
-   
**110**  
Workstations
-   
**9**  
Offices
-   
**2**  
Pantries







**675 AVE OF THE AMERICAS**

WEST 33RD ST

WEST 31ST ST

WEST 30TH ST

WEST 29TH ST

C E

WEST 23RD ST

1

1

F M

WEST 23RD ST

Q R W

4 6

WEST 25TH ST

WEST 24TH ST

WEST 22ND ST

WEST 21ST ST

MADISON SQUARE PARK

AVENUE

LEXINGTON AVENUE

UNION SQUARE PARK

A C E L

WEST 14TH ST

1 2 3

F M L

WEST 13TH ST

WEST 12TH ST

WEST 11TH ST

Q R W L 4 5 6

EAST 33RD ST 6

EAST 32ND ST

EAST 31ST ST

EAST 30TH ST

EAST 29TH ST

EAST 28TH ST 6

EAST 27TH ST