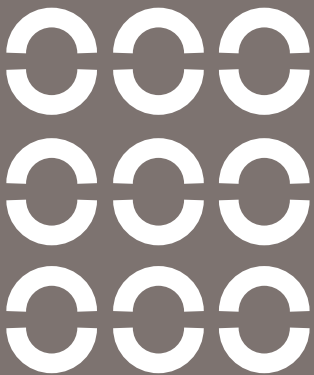
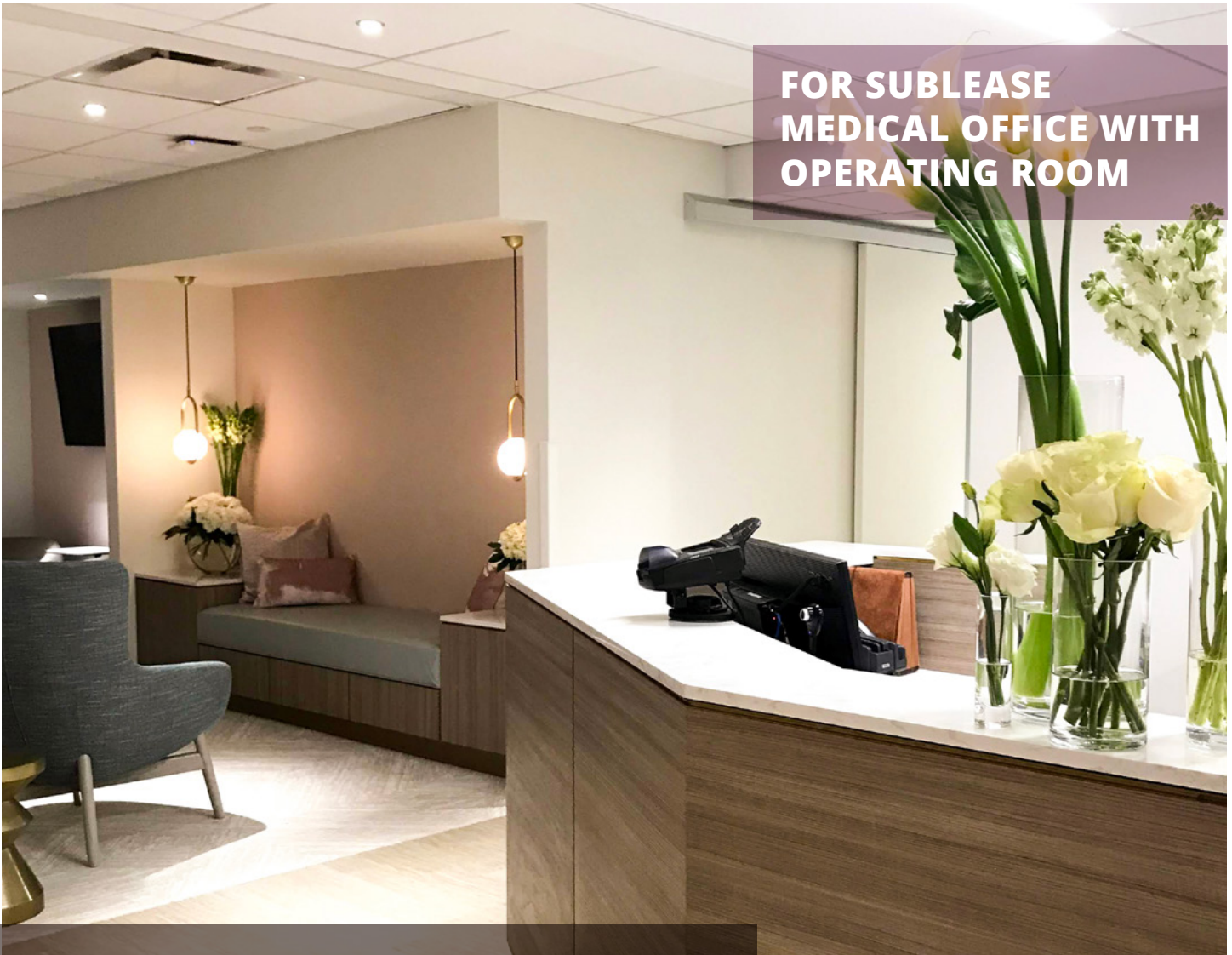


# 110 EAST 60<sup>TH</sup> STREET

UPPER EAST SIDE

**FOR SUBLEASE  
MEDICAL OFFICE WITH  
OPERATING ROOM**



## **PREMISES**

Entire 5th Floor    12,300 SF  
Part 6th Floor    3,000 SF

## **AVAILABILITY**

Immediate

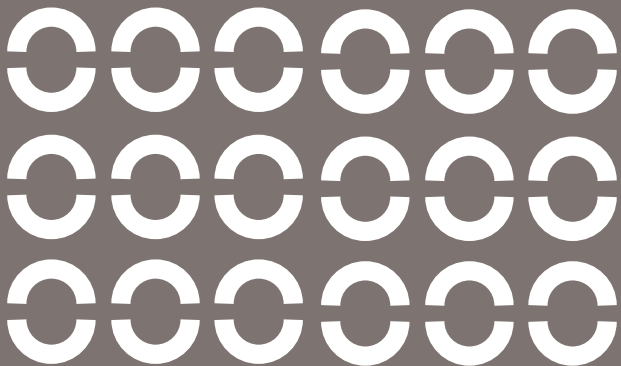
## **TERM**

June 2035



## BUILDING HIGHLIGHTS

- Class A medical office building
- Article 28 compliant
- Building upgrades recently completed in excess of \$20M
- New lobby, facade, mechanical equipment and elevators
- 24/7 attended lobby
- Close proximity to transportation

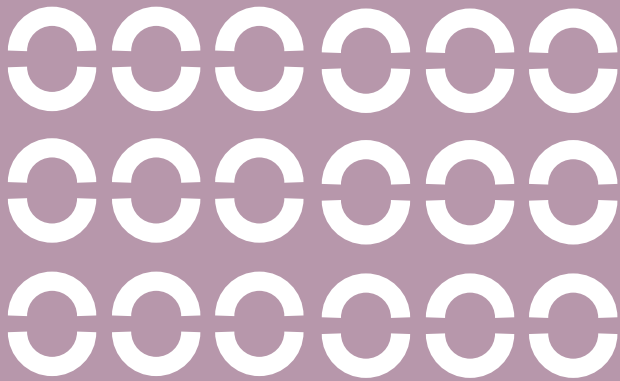






## ENTIRE 5TH FLOOR - 12,300 RSF

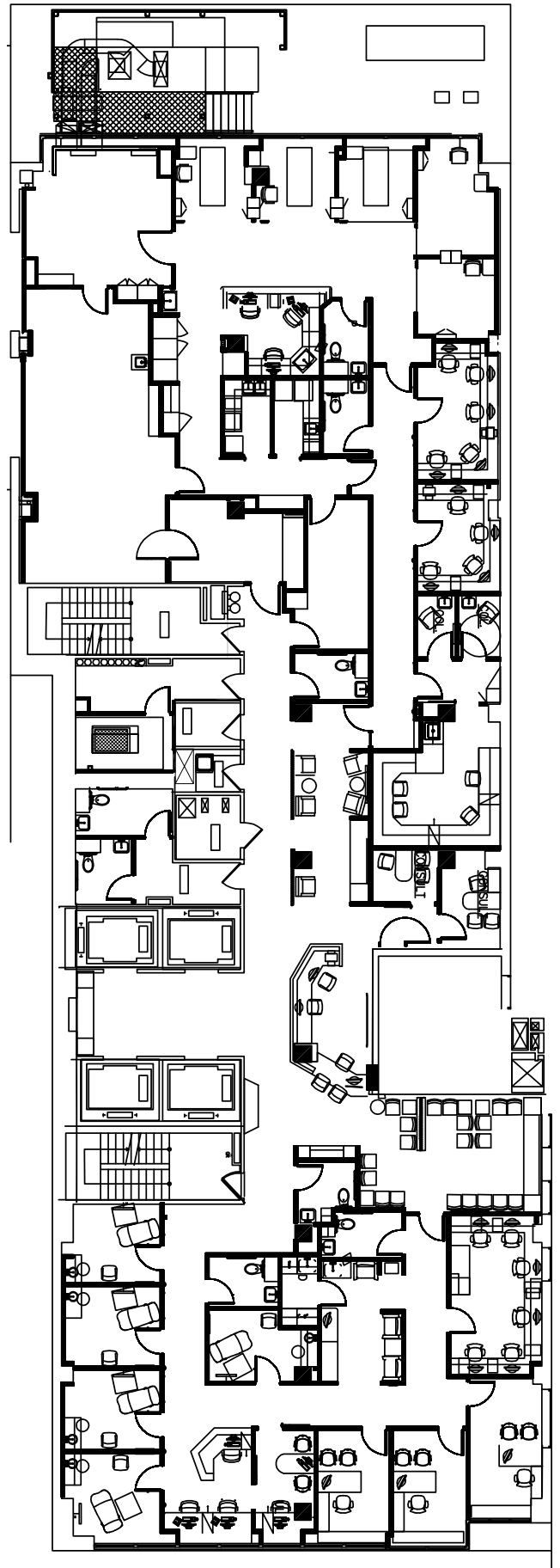
- Recently built medical office
- Spacious operating room with recovery bays
- Endocrinology lab
- Dedicated emergency power generator
- Large reception area and waiting room
- Three physicians offices
- Lab office and shared offices / workstations
- Three nurses stations
- Five exam rooms
- Consult rooms
- Eight private restrooms



## PARTIAL 6TH FLOOR - 3,000 RSF

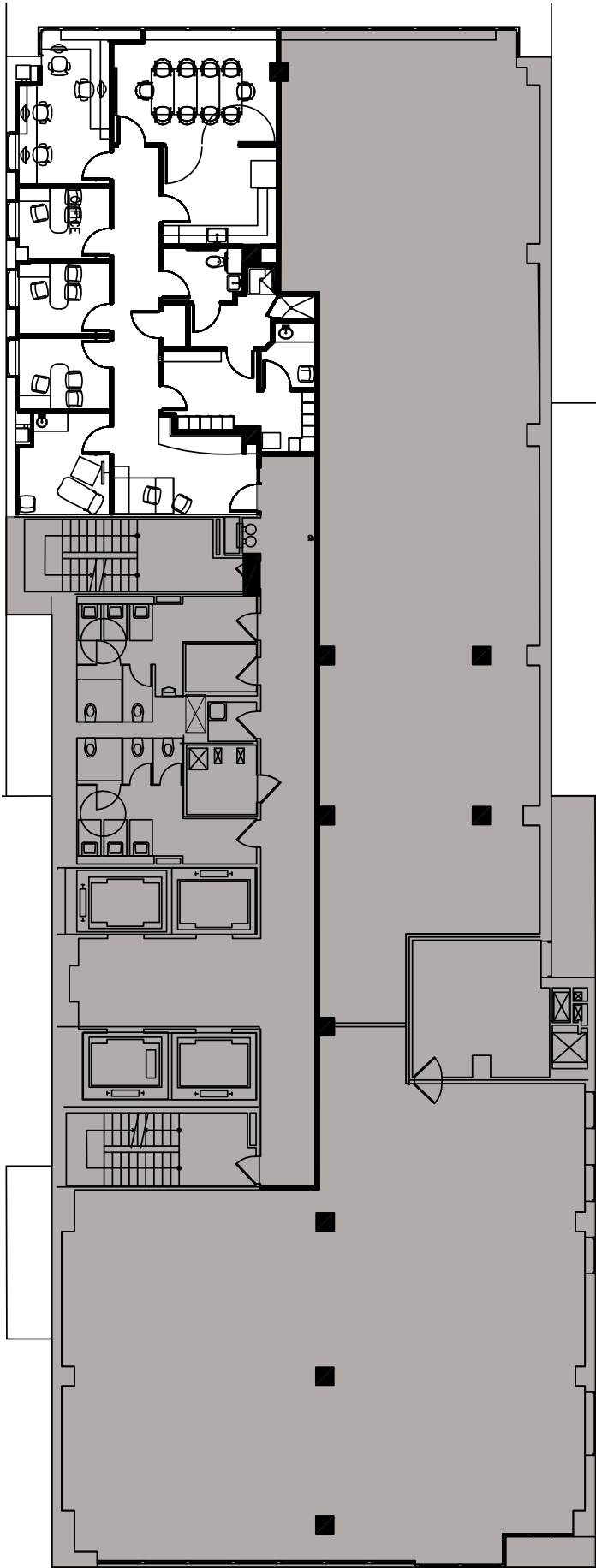
- Four offices
- One additional exam room
- Locker room with private shower
- Two private restrooms
- Conference room and break room pantry

## ENTIRE 5TH FLOOR





**PARTIAL 6TH FLOOR**



# 110 EAST 60<sup>TH</sup> STREET

UPPER EAST SIDE



## AREA HIGHLIGHTS

- Close proximity to prime dining, galleries, hospitality and retail such as Bloomingdale's, Sephora, Zara, Whole Foods and more.
- Short walk to the following subways:

4 5 6 F N Q R W

