



CHELSEA ARTS CENTRE

210 11TH AVE

- Prime West Chelsea, between The High Line and Hudson River Park at the Southeast corner of West 25th Street
- Several units available ranging in size from 1,934 rsf to 3,740 rsf for immediate possession
- Building features 24/7 access, operable windows, 3 elevators (1 oversized), tenant-controlled HVAC and high quality interior finishes
- Walking distance to Hudson Yards, Chelsea Waterside Park, Chelsea Dog Park, Pier 62 Skatepark, Pier 62 Carousel, Hudson River Park, Pier 63, The High Line, Chelsea Piers, and Little Island at Pier 55

CHELSEA ARTS CENTRE

210 11TH AVE

Current Availabilities

Unit

Size

Possession

Suite 500:

3,045 rsf

Immediate

- 9 Windows providing west exposure; wide open space with pantry

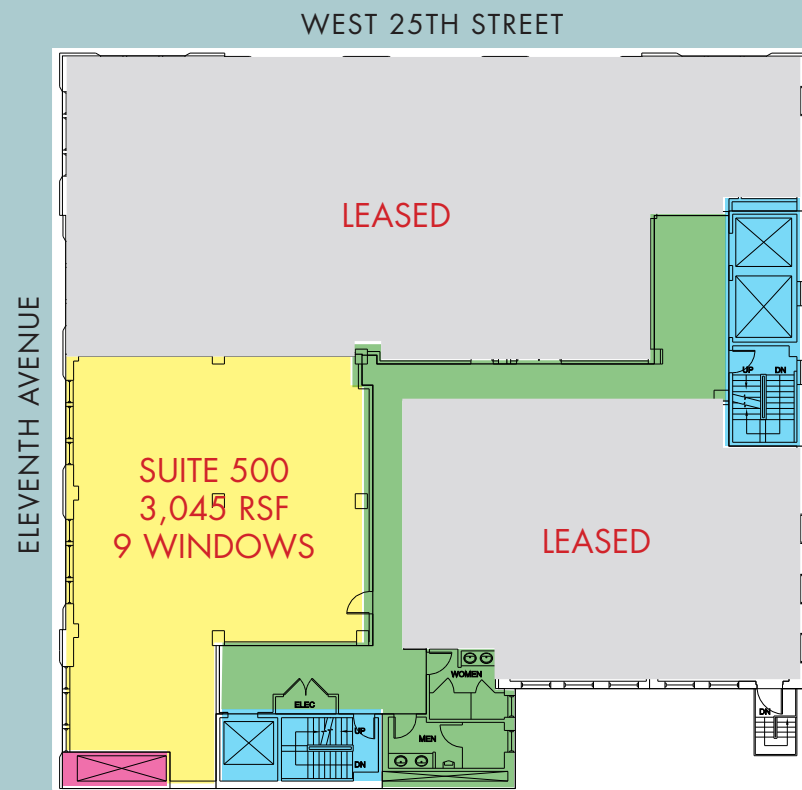
- 8 Windows providing south and east exposure; wide open space

Comments:

- Boutique building offering flexible lease terms - Good city and river views
- All units feature polished concrete floors, operable windows, and exposed ceilings
- Most spaces are wide open with creative lighting and pantry
- Some spaces have offices and conference rooms
- Prime Chelsea neighborhood - Hudson Yards vicinity
- Spectrum (formerly Time Warner) & Verizon data/telecom
- Bike Room with storage for helmets and bike air pump

210 ELEVENTH AVENUE

Suite 500: 3,045 rsf - 9 Windows providing west exposure; wide open space with pantry



(for descriptive purposes only; not to scale.)





Hudson River Park



High Line



Hudson Yards