

**TRUMP
TOWER**
NEW YORK

725 FIFTH AVENUE
NEW YORK, NY

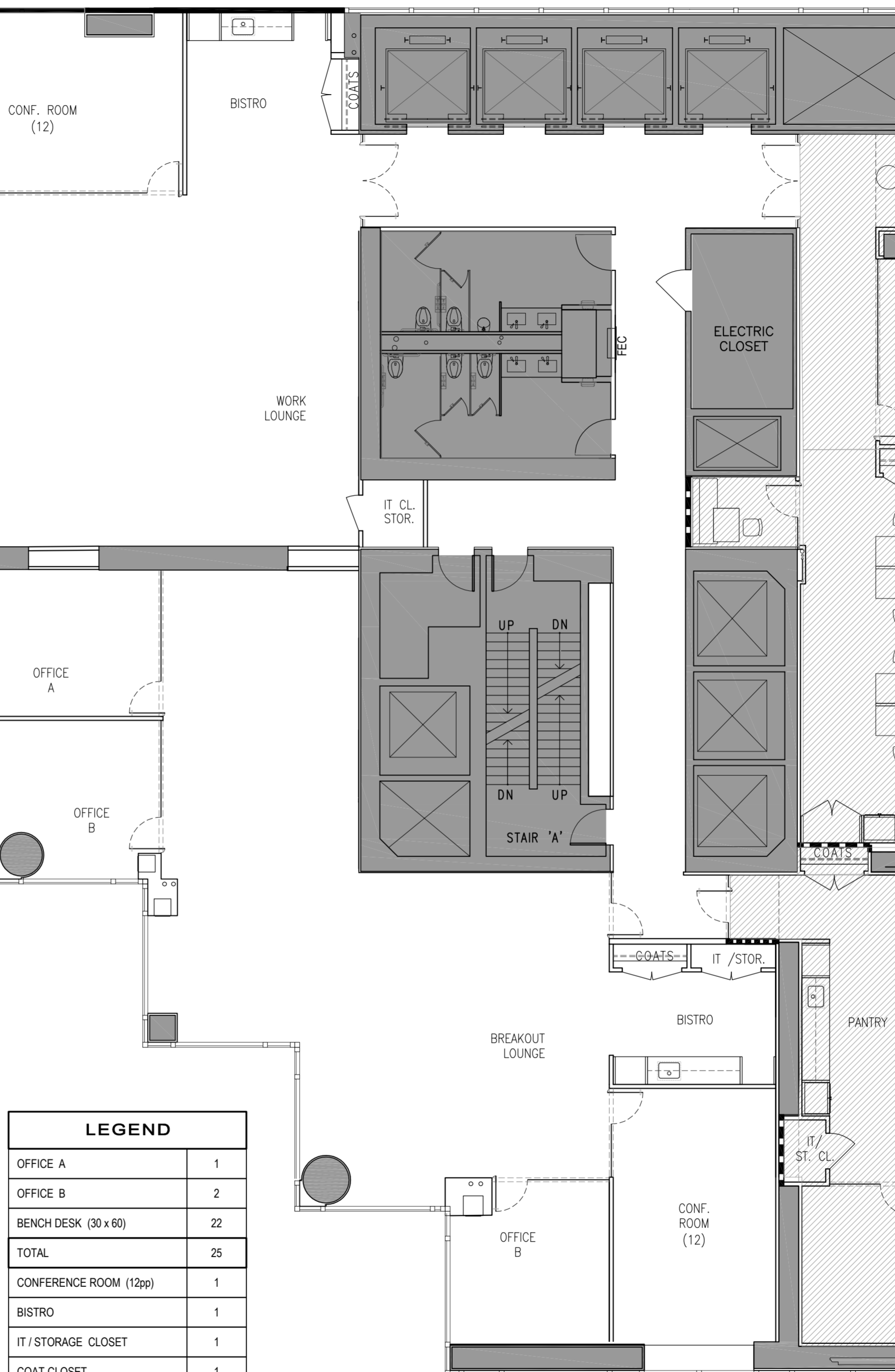
ALL DRAWN AND WRITTEN MATERIAL CONTAINED HEREIN IS THE SOLE PROPERTY OF DPM ARCHITECTURE, P.C. AND MAY NOT BE DUPLICATED, PUBLISHED, DISCLOSED OR USED WITHOUT THE EXPRESS WRITTEN CONSENT OF DPM ARCHITECTURE P.C. THE DRAWINGS ARE SCOPE DOCUMENTS WHICH INDICATE THE GENERAL SCOPE OF WORK, AND SUCH, DO NOT NECESSARILY DESCRIBE ALL WORK REQUIRED FOR THE FULL PERFORMANCE AND COMPLETION OF THE WORK. GENERAL CONTRACTOR IS TO FURNISH AND INSTALL ALL ITEMS REQUIRED FOR THE COMPLETION OF HIS WORK WITHOUT ADJUSTMENT TO THE CONTRACT AMOUNT UNLESS THE SCOPE OF WORK CHANGES FROM THAT INDICATED ON THE DRAWINGS. IN THE EVENT OF A CONFLICT WITHIN OR AMONG THE CONTRACT DOCUMENTS, THAT DOCUMENT PLACING THE GREATEST BURDEN UPON THE GENERAL CONTRACTOR SHALL GOVERN. THE GENERAL CONTRACTOR SHALL CAREFULLY STUDY AND COMPARE ALL DRAWINGS, REPORTING ANY ERROR, INCONSISTENCY OR OMISSION HE MAY DISCOVER AND REPORT SAME TO DPM ARCHITECTURE P.C. AND IN NO CASE SHALL HE PROCEED IN UNCERTAINTY.

No.	DATE	ISSUED / REVISED
1	5/22/23	REVIEW

FIFTH AVENUE

LEGEND	
OFFICE A	1
OFFICE B	3
BENCH DESK (30 x 60)	30
TOTAL	34
CONFERENCE ROOM (12pp)	1
WORK LOUNGE	1
BISTRO	1
IT / STOR. CLOSET	1
COAT CLOSET	1

ALL AREAS AND DIMENSIONS ARE APPROXIMATE AND ARE SUBJECT TO CHANGE PENDING FIELD VERIFICATION.



LEGEND	
OFFICE A	1
OFFICE B	2
BENCH DESK (30 x 60)	22
TOTAL	25
CONFERENCE ROOM (12pp)	1
BISTRO	1
IT / STORAGE CLOSET	1
COAT CLOSET	1

ALL AREAS AND DIMENSIONS ARE APPROXIMATE AND ARE SUBJECT TO CHANGE PENDING FIELD VERIFICATION.

WEST 56th STREET

DRAWING TITLE:
**21st FLOOR
PRE-BUILT
TEST FIT
6.13.23**

SEAL PROJ. NO. 23-39

CHECKED BY: ME
DRAWN BY: RA/EL
SCALE: 1/8" = 1'-0"

TF-7A.21