



BUILT CORNER OFFICE SPACE

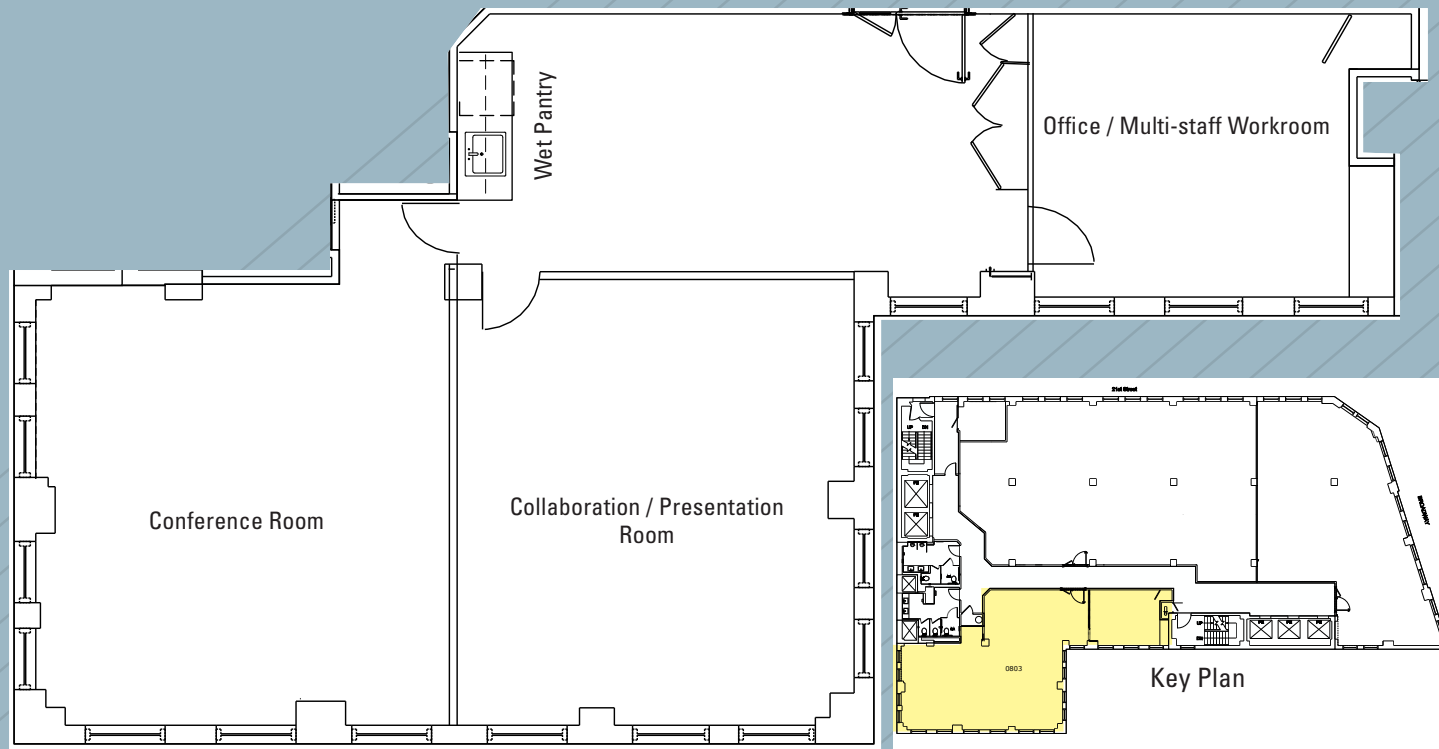
3,218 RSF



915 BROADWAY

BETWEEN THE PARKS

Southwest Corner of 21st Street & Broadway




(plan for descriptive purposes only; not to scale.)

Suite 803: 3,218 rsf

- Built space featuring hardwood floors throughout and 3-Sides of windows offers abundant natural light
- (1) oversized conference room, (1) large collaborative/presentation room, (1) Office/multi-staff workroom, wet pantry

Possession: Immediate

Rent: Call or email for info

- High speed fiber on each floor connected to a redundant fiber loop below the building
- Direct access to the Union Square transportation hub **4 5 6 L N Q R W** express and local subway lines; and close proximity to NJ  station at 23rd St/6th Ave
- Centrally located between Union Square and Madison Square Park, the area offering a wide variety of services, retail, and dining options



Large collaboration / presentation room



Oversized Conference Room



Private Office/Multi-staff Workspace



Wet Pantry



Walk, Bike, Drive or Ride to Work & Play

Dine: ABC Kitchen, Barn Joo, Eataly, Gramercy Tavern, Novita, Merakia, Union Square Cafe, Whole Foods

Shop: Athletica, Design Within Reach, Lululemon, Nike, Nordstrom Rack, NYX Cosmetics, Untuckit

Enjoy: The Parks, Union Square Farmers Market, Festivals, Soulcycle, Equinox, Uplift Studios

Neighbors: BuzzFeed, Dropbox, Facebook, IBM Resources, Mastercard, NYU, Santander, The Flatiron Building, W Hotel



