

# TOWER 56

PLAZA DISTRICT 126 E 56

TOWER 56

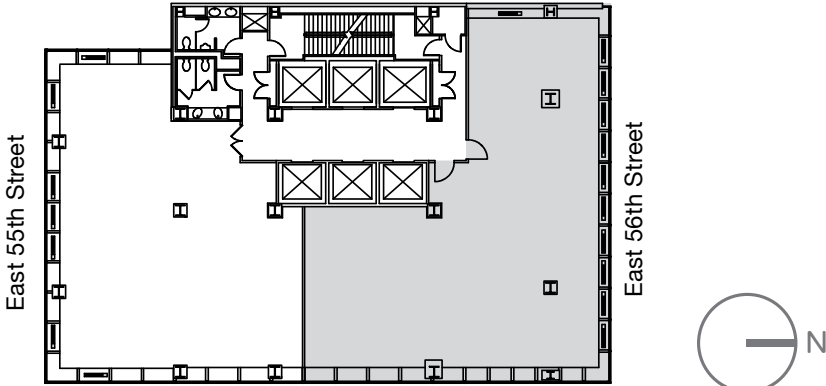
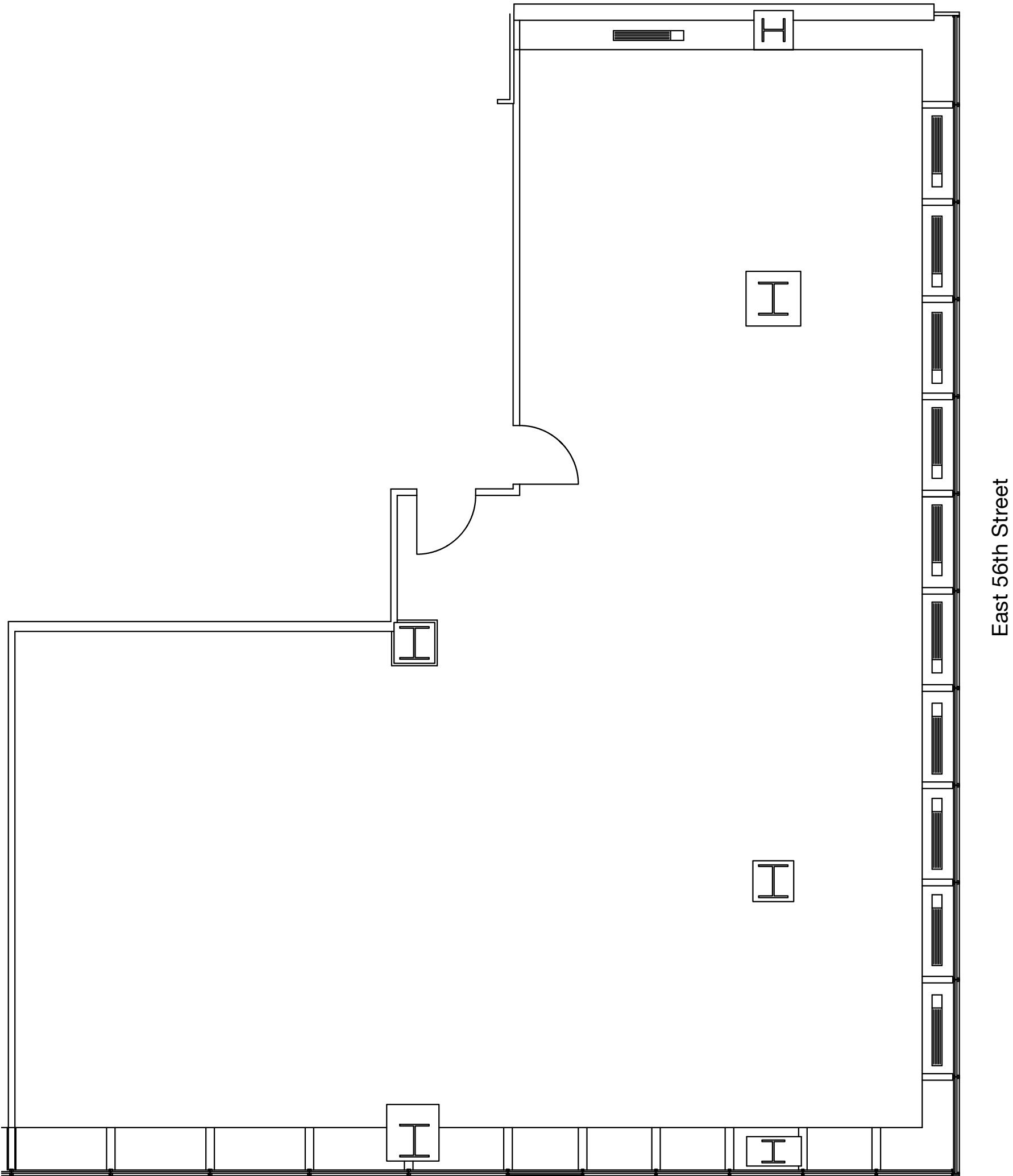




# TOWER56

PLAZA DISTRICT | 126 E 56

Suite 510  
Shell-Core  
To be Pre-Built  
3,373 RSF







# *elegant* ARRIVAL

A dramatic ebony wood feature wall is accented by translucent glass panels and silk cord fabric-enhanced walls. Elegant, honed Blue Massacio marble floors and honed Blue De Savoie walls provide stylish finishing touches.



*first-class* STYLE







*amenity*

# RICH

Club 56, opening 2023, will feature a conference room with videoconferencing, a tenant lounge and pantry, and a fitness facility with lockers and showers.



The image shows a bright, modern office space. In the foreground, there's a desk with a computer monitor and a small potted plant. A beige office chair is positioned in front of it. The office has large windows on the left side, providing a view of a city skyline. In the background, there are more desks with computers and another office area visible through a glass partition. The floor is covered with a patterned carpet, and there are some potted plants scattered throughout the space.

# *refined* OCCUPANCY

Tenants – from hedge funds to investment companies, from family offices to endowments, from service firms to tech entrepreneurs – will all equally appreciate the privacy and prestige of this 33-story building.

Ideal for those with small space requirements, the suites at Tower 56 offer high visibility and full floor identity and City and skyline views from tower floors.







# *penthouse* PERFECTION

A spectacular full floor penthouse, complete with private wraparound terrace and eye-popping views, is a unique opportunity for a tenant seeking showstopper space.









*location*

# REIGNS

Located on 56th Street just east of Park Avenue, Tower 56 is as accessible to the Upper East Side as it is to Grand Central Terminal. Fine dining and casual eateries are easily walkable along with Madison Avenue boutiques and New York's finest hotels.





