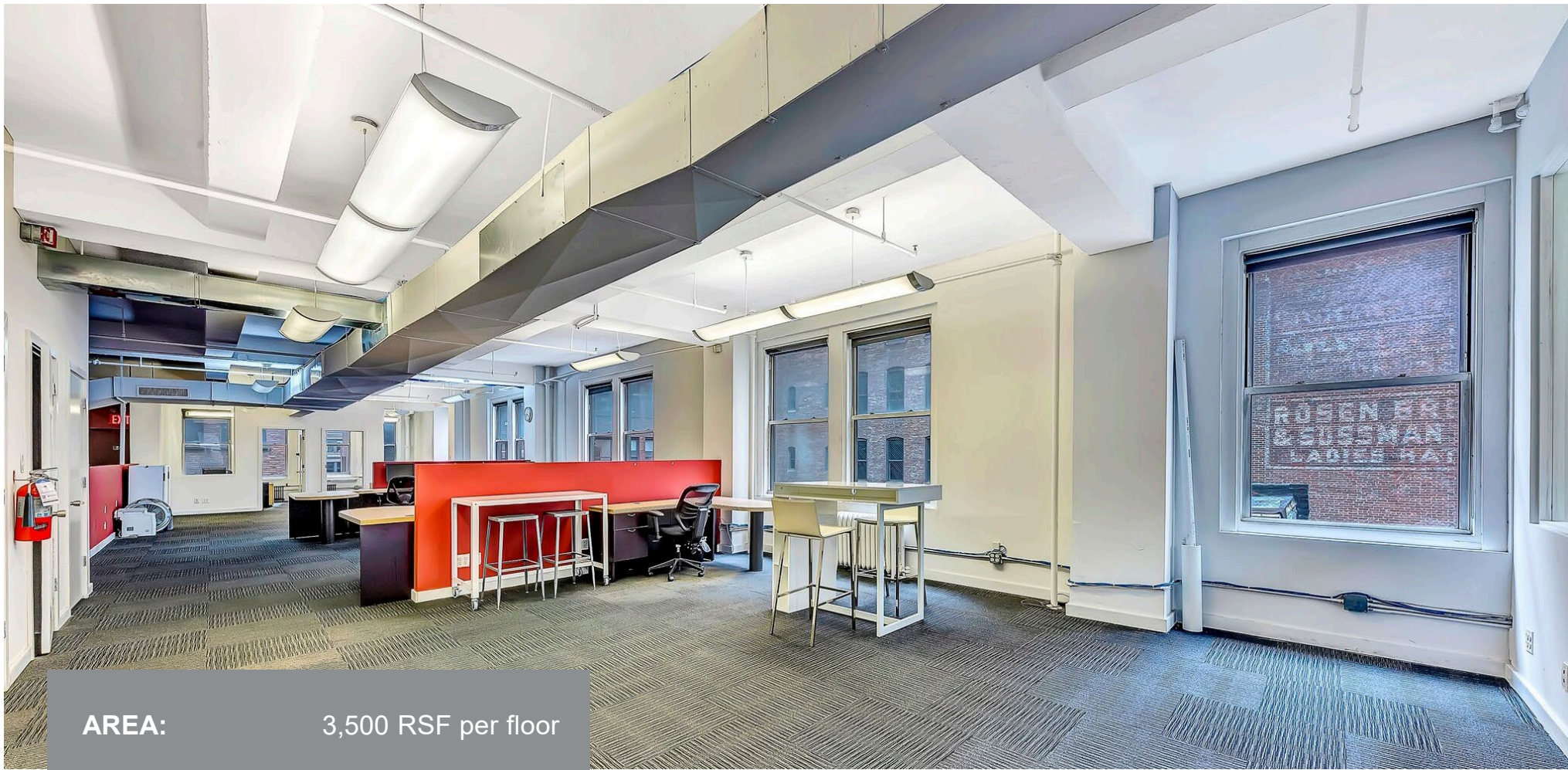


54 WEST 39TH STREET

M I D T O W N
W E S T

BETWEEN FIFTH & SIXTH AVENUES





AREA: 3,500 RSF per floor

POSSESSION: Immediate

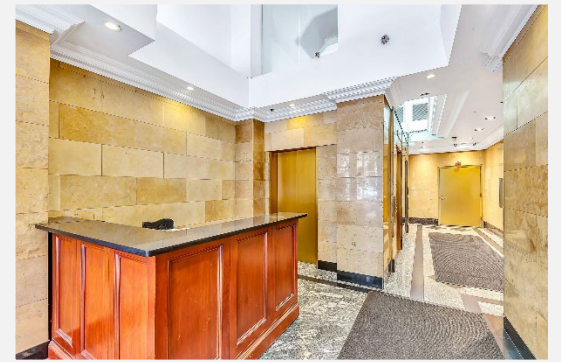
TERMS: Long-term

PROPERTY HIGHLIGHTS

- 6th, 7th and 12th full-floor, built-out office spaces are available for lease
- Each floor is approximately 3,500 RSF
- Portion of 10th floor also available at approximately 1,500 RSF
- Each floor consists of approximately four offices and one conference room
- Very little loss factor
- Elevator building
- Close proximity to the B, D, F M & 7 subway lines at Bryant Park and the N, Q, R, W subway lines at Times Square/42nd Street

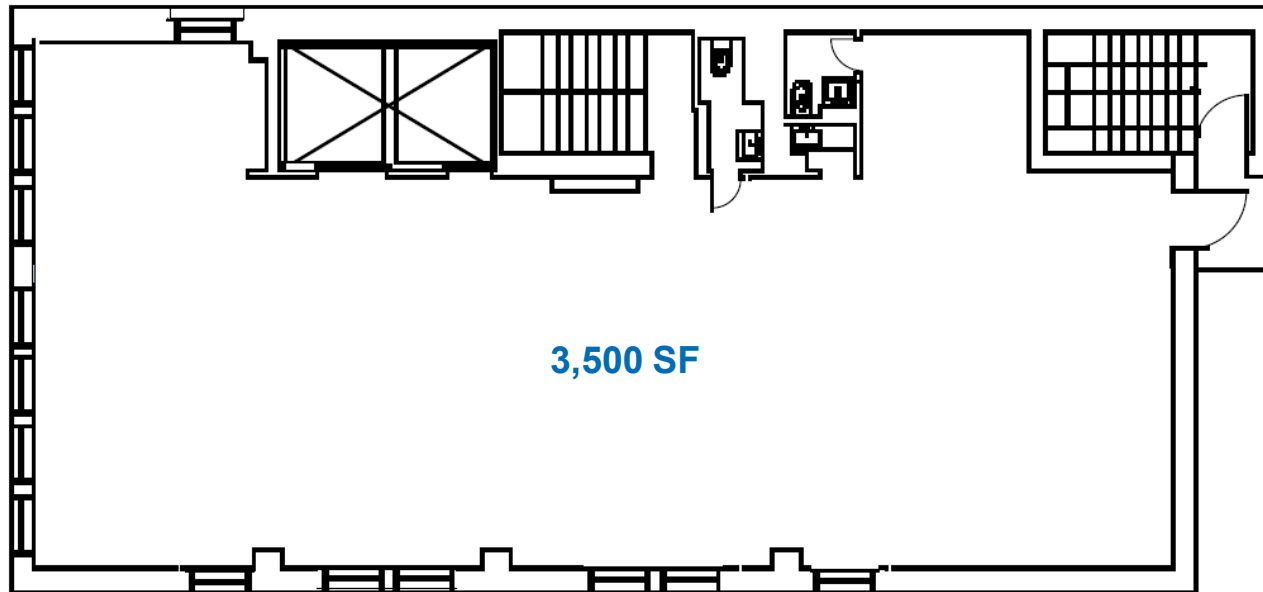
54 WEST 39TH
STREET

M I D T O W N
W E S T



54 WEST 39TH STREET
M I D T O W N
W E S T

**TYPICAL
FLOOR PLAN**
3,500 RSF



FLOOR KEY

| | |
|------------------------|----------|
| 6 th Floor: | 3,500 SF |
|------------------------|----------|

| | |
|------------------------|----------|
| 7 th Floor: | 3,500 SF |
|------------------------|----------|

| | |
|-----------------------------------|----------|
| 10 th Floor (portion): | 1,500 SF |
|-----------------------------------|----------|

| | |
|-------------------------|----------|
| 12 th Floor: | 3,500 SF |
|-------------------------|----------|

54 WEST 39TH
STREET

M I D T O W N
W E S T

54 WEST 39TH STREET

M I D T O W N
W E S T

