



For Sublease

BUILT PLUG & PLAY SUBLEASE

- Premises:** Partial 11th Floor – 3,501 RSF
- Possession:** Immediate
- Term:** September 29, 2025
- Rental:** Upon request
- Space Notes:**
- Layout includes 5 offices, 2 conference rooms, 13 workstations, reception, pantry and IT room
 - Direct presence off the elevator
- Location Notes:**
- A short walk to Penn Station

For Sublease

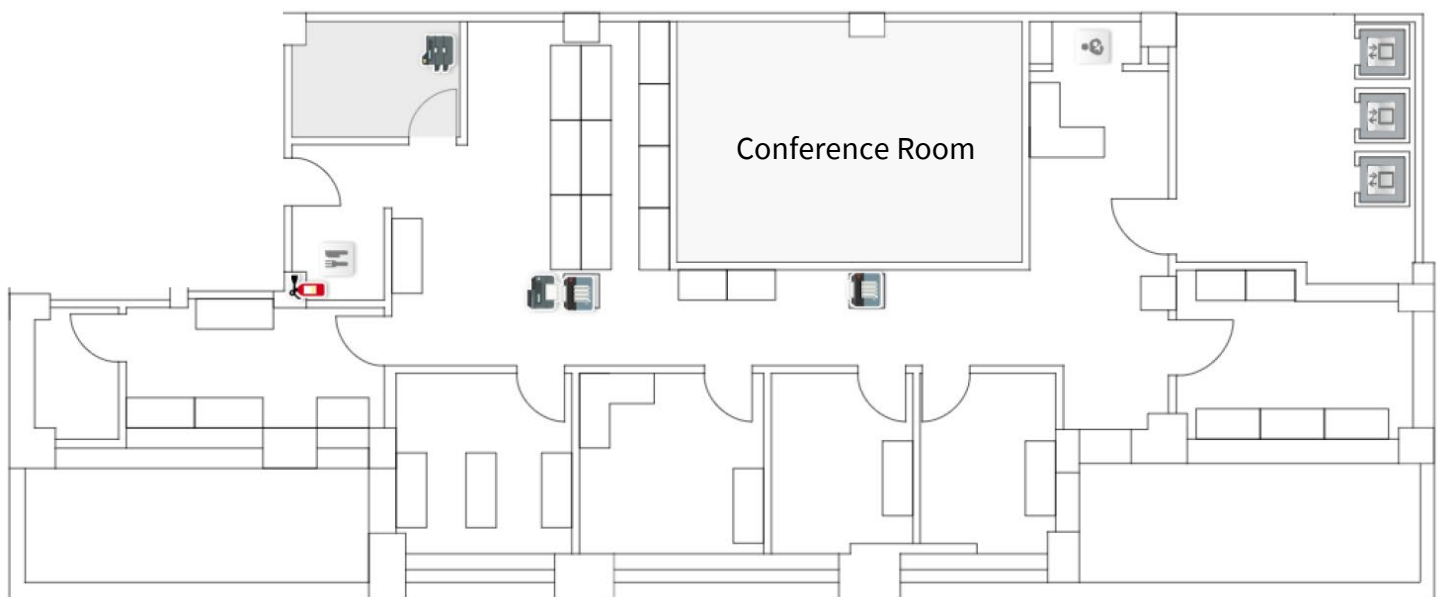
Partial 11th Floor



For Sublease

Partial 11th Floor

As-Built



Offices:	5
Workstations:	13
<u>Reception:</u>	<u>1</u>
Total Seats:	19

Conference rooms:	2
-------------------	---