

# 551 MADISON

## Partial 10th floor

3,520 RSF

- + Furniture can be made available
- + Move-in ready opportunity
- + Boutique office with customizable layout
- + Logo and brand prominence
- + Owner-occupied building

551 MADISON AVENUE, NEW YORK, NEW YORK 10022



551 MADISON

## Partial 10th floor

3,520 RSF

## Designed for work.

551 Madison is a 17-story modern building in the heart of the Plaza District. Designed for meaningful work, our spaces feature mindful touches that enhance focus, productivity, and collaboration.





551 MADISON

## Partial 10th floor

3,520 RSF

### DESIGN PHILOSOPHY

Our office spaces are designed for meaningful work. We've put great care into aesthetic and environmental details. So your team can focus, be more productive, and collaborate better together in the office as opposed to home. We know that when it comes to work, space matters.

10th floor office #1



10th floor office #2



10th floor reception area



10th floor office #3

551 MADISON

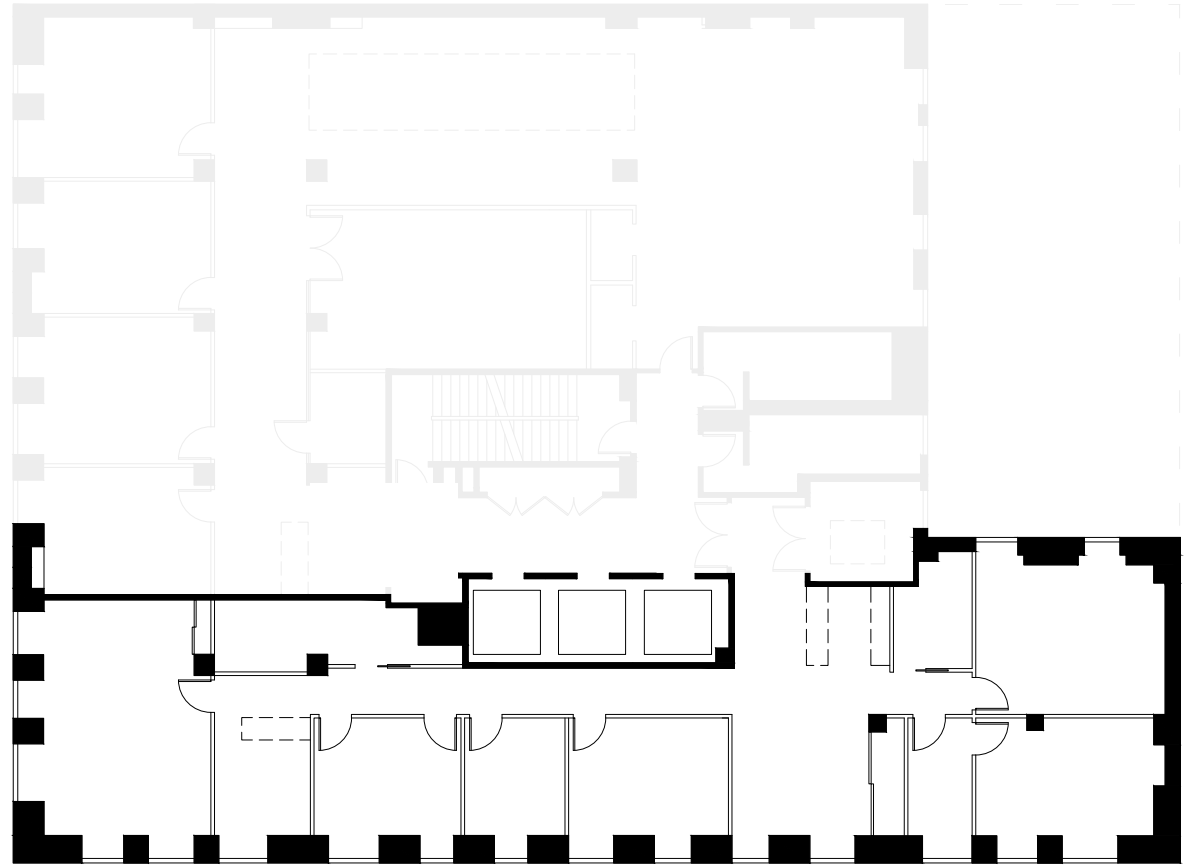
## Partial 10th floor

3,520 RSF

### CUSTOMIZABLE LAYOUT

- + Furniture can be made available
- + Move-in ready opportunity
- + Boutique office with customizable layout
- + Recently renovated entry lobby with 24/7 attendant
- + HVAC controlled by individual offices
- + Logo and branding opportunity
- + Owner-occupied building

Madison Avenue



55th Street

551 MADISON

## Partial 10th floor

3,520 RSF

### DESIGN PHILOSOPHY

Our office spaces are designed for meaningful work. We've put great care into aesthetic and environmental details. So your team can focus, be more productive, and collaborate better together in the office as opposed to home. We know that when it comes to work, space matters.

Building lounge (4th floor)



4th floor lounge meeting table



4th floor private lounge and event space



551 MADISON

# Partial 10th floor

3,520 RSF

Custom build-out renderings



Entryway rendering



Arrival lounge rendering



Conference room and hallway rendering

551 MADISON

## Partial 10th floor

3,520 RSF

# Service and amenities

### 24/7 Concierge Check-In

---

You clients will enter through our recently renovated lobby and check-in with our professional 24/7 attendant.

### Owner-Occupied

---

The Lexin Capital ownership team is located on the 4th floor. We're on a first-name basis with most of our tenants.

### Premier Management

---

Cushman & Wakefield is known as a top-tier management company. Our service and building staff are among the best.

### Private Lounge & Event Space

---

Our private lounge and meeting space can be booked by any building tenant for day or evening events.



551 MADISON

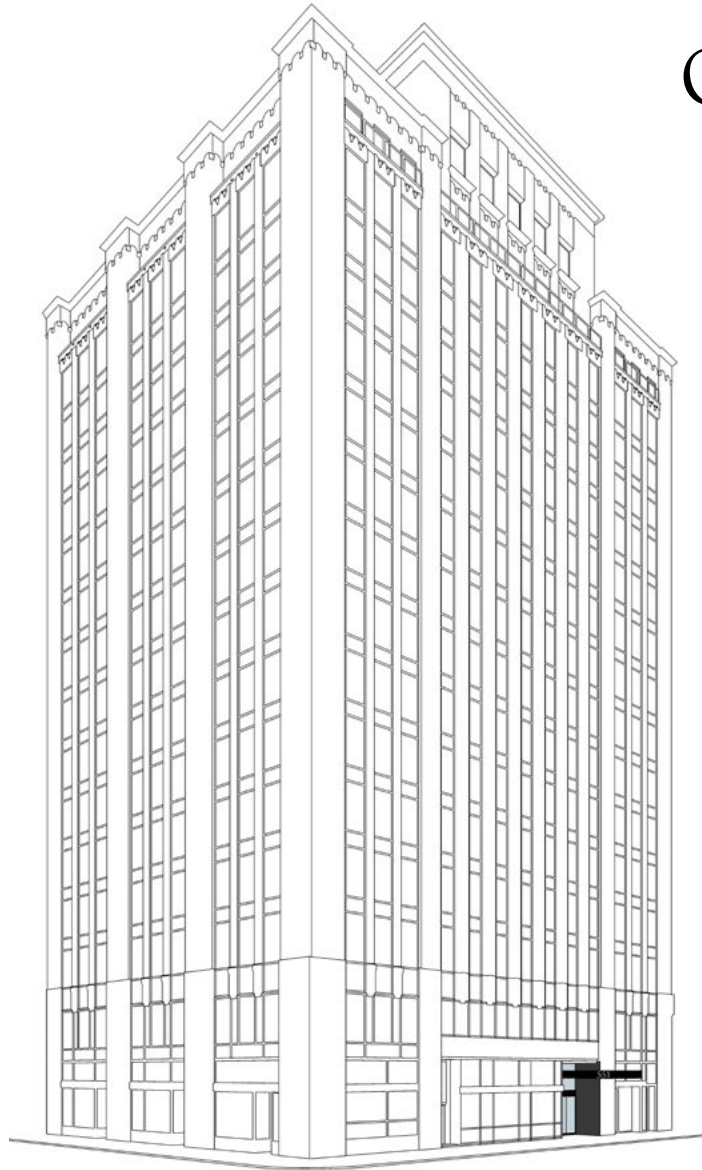
## Partial 10th floor

3,520 RSF

### BUSINESS IN MIDTOWN

Midtown Manhattan is the largest central business district in the world. It is known as the country's largest office concentration and a major hub for media, entertainment, and financial businesses.

551 is located in the heart of this commercial and retail corridor, with close proximity to everything your business needs to thrive.



## Our building

### UNBEATABLE LOCATION

Our building is located prominently on the northeast corner of Madison Avenue and 55th Street, within New York's most premier business district.

- Plaza District prestige
- Blocks from Central Park
- Convenient to transportation
- Near retail and restaurants
- Proximity to other businesses