

# It's Chelsea. Terrific.

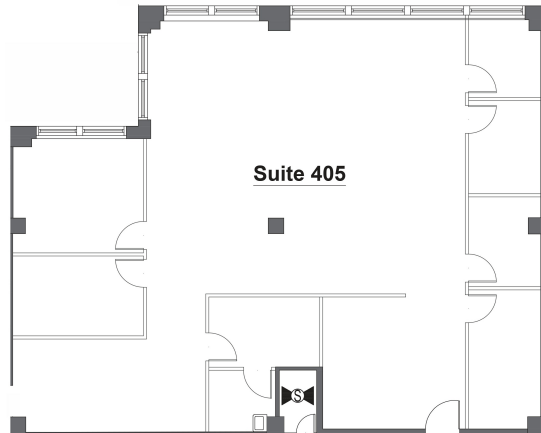
150 West 30th Street (between 6th and 7th Avenues)

**Suite 405**



## Facts

- 3,700 rentable sq ft
- SE corner unit move-in ready
- Large space built with 5 offices and a conference room
- Open area furnished with desks and reception
- Wet pantry, concrete floors, open ceiling, ample storage



## About the Property

Gorgeous Lobby/ Updated Elevators

24 hour/7day Lobby Attendant

Full Staff

6 elevators (4 passenger, 2 freight)

Great Tenant Roster

Just off Seventh Avenue, steps from

Penn Station, close to Herald Square

Subways and Path