



Bryant Park



Madison Square Park



Empire State Building



Penn Station



Building Lobby

Centrally Located.  
Great Transit Access.  
NoMad/Murray Hill.

**152 Madison Avenue**

Northwest Corner of East 32nd Street





Partial 4th Floor - Existing Conditions


Partial 4th Fl    **Sq. Ftge.**    **Rent**    **Possession**  
 3,885 rsf    Upon Request    Immediate

- Furnished corner space fronting Madison Avenue offering direct elevator exposure
- Glass-front conference room featuring a mix of cork and blackboard wall finishes, (4) windowed offices
- Beautifully appointed wet pantry with chalkboard back-splash and bar-height island seating, IT/storage room, open area

Suite 1800:    2,938 rsf    Upon Request    Immediate

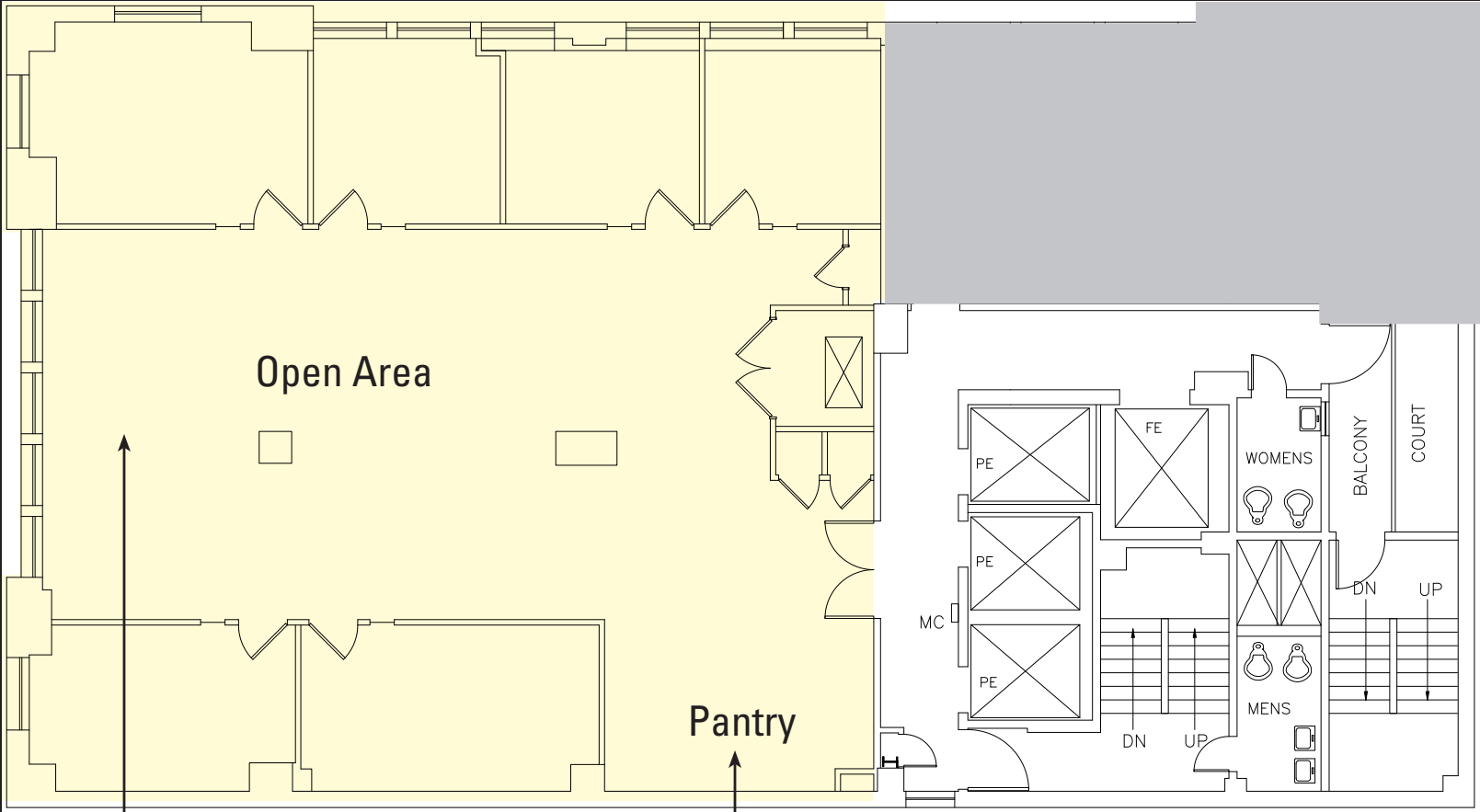
- Built space with (6) windowed offices, (1) large office/meeting room, (1) conference room, and wet pantry

- Centrally located between Bryant Park and Madison Square Park

- Accessible via **B D F M 4 5 6 7 N Q R W S** subways and Penn Station transportation hub's **1 2 3 A C E**  

- Art deco detailed building, attended lobby and 24/7 access

PARTIAL 4TH FL - 3,885 RSF  
EXISTING CONDITIONS



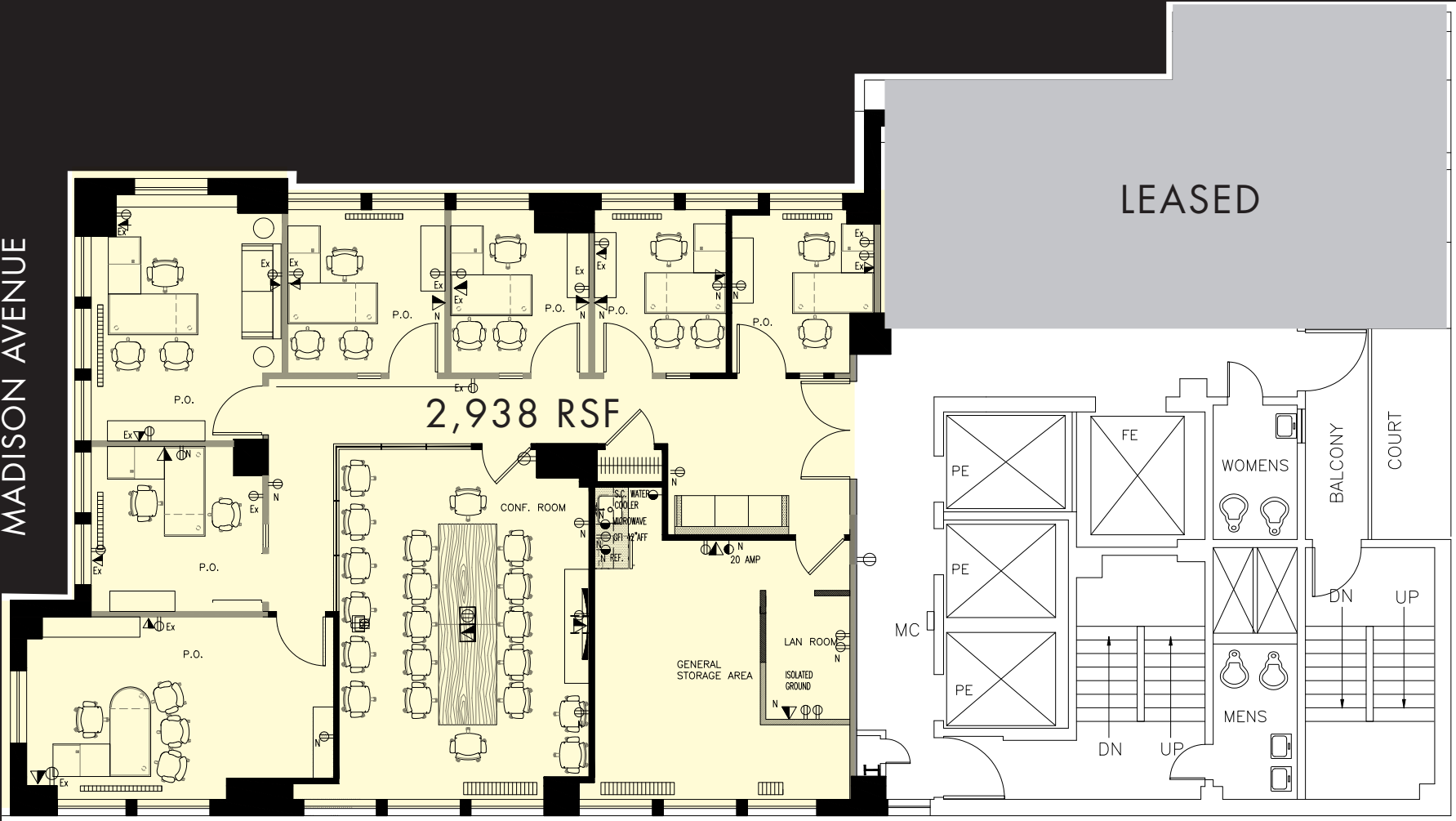
(for descriptive purposes only; not to scale.)

PARTIAL 4TH FL - 3,885 RSF  
EXISTING CONDITIONS



SUITE 1800 - 2,938 RSF  
(AS-BUILT)

MADISON AVENUE



(for descriptive purposes only; not to scale.)  
Furniture shown for layout concept only

