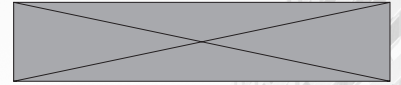


FOR SUBLEASE

1350 Avenue of the Americas
New York, NY 10019



3,938 SF | PARTIAL 17TH FLOOR

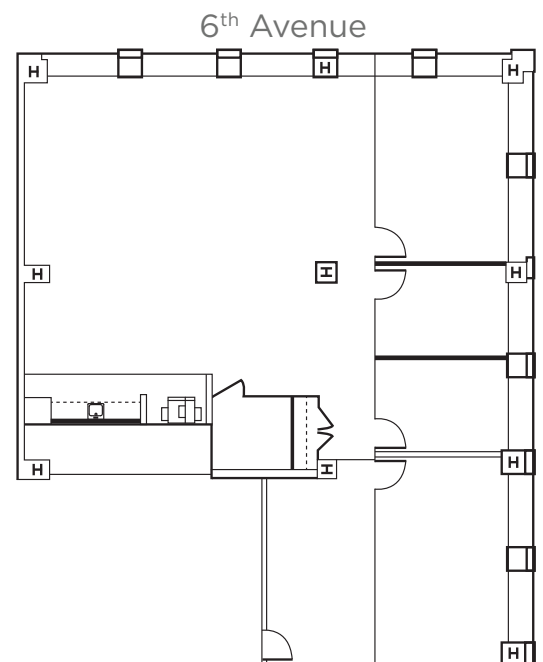
Property Highlights

- Very efficient layout
- Furnished and wired
- Corner office has views of Central Park
- Sweeping natural light and views of Sixth Avenue
- Bullpen space for 20 people with existing workstations

Possession: Immediate

Rent: Negotiable **Term:**

February 27, 2025



FOR SUBLEASE

1350 Avenue of the Americas
New York, NY 10019

