



Entire 7th Floor - Conference Room



Entire 16th Floor - Existing Conditions

# 29 West 38th Street

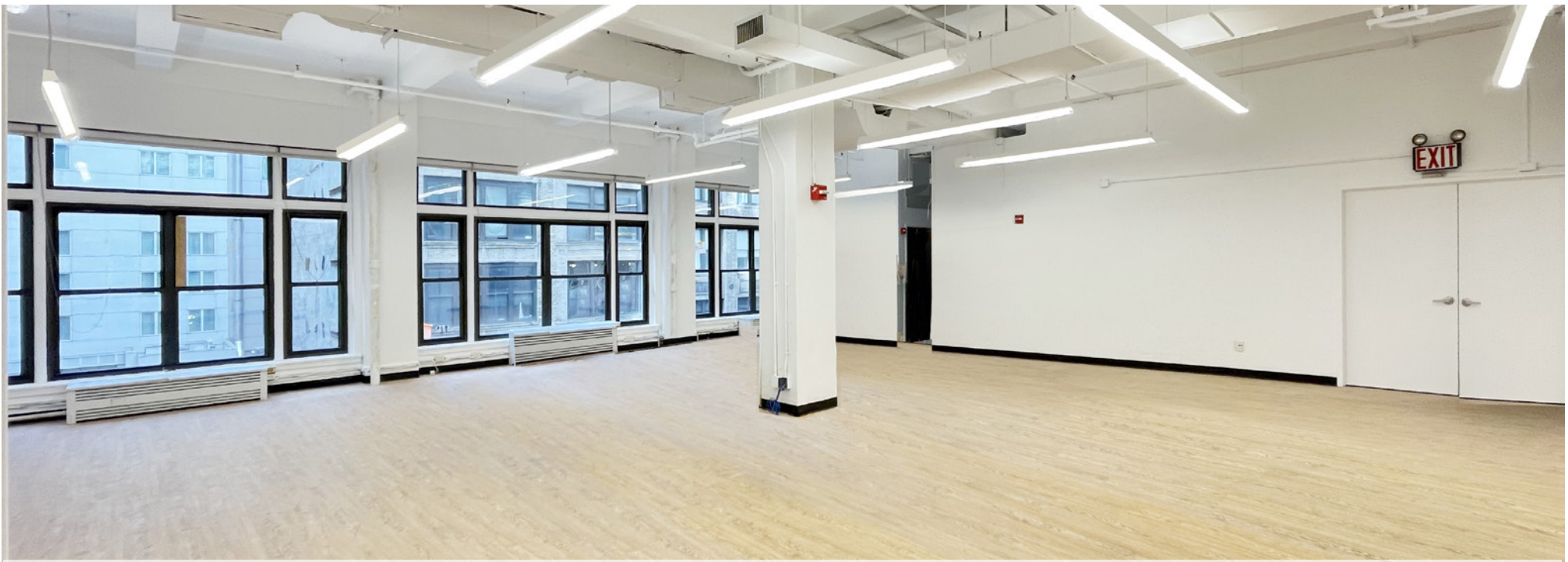
Between 5th & 6th Avenues

Full Floor Branding Opportunities  
Move-In Ready Prebuilt Suites  
and White Box Options

Short Walk to Grand Central, Penn Station, Port Authority  
and Bryant Park **B D F M 4 5 6 7 N Q R W S** subway lines



Building Lobby



Suite 301 - Existing Conditions

**Sq. Ftge.**

**Possession**

Immediate

Suite 301:

3,953 rsf

Immediate

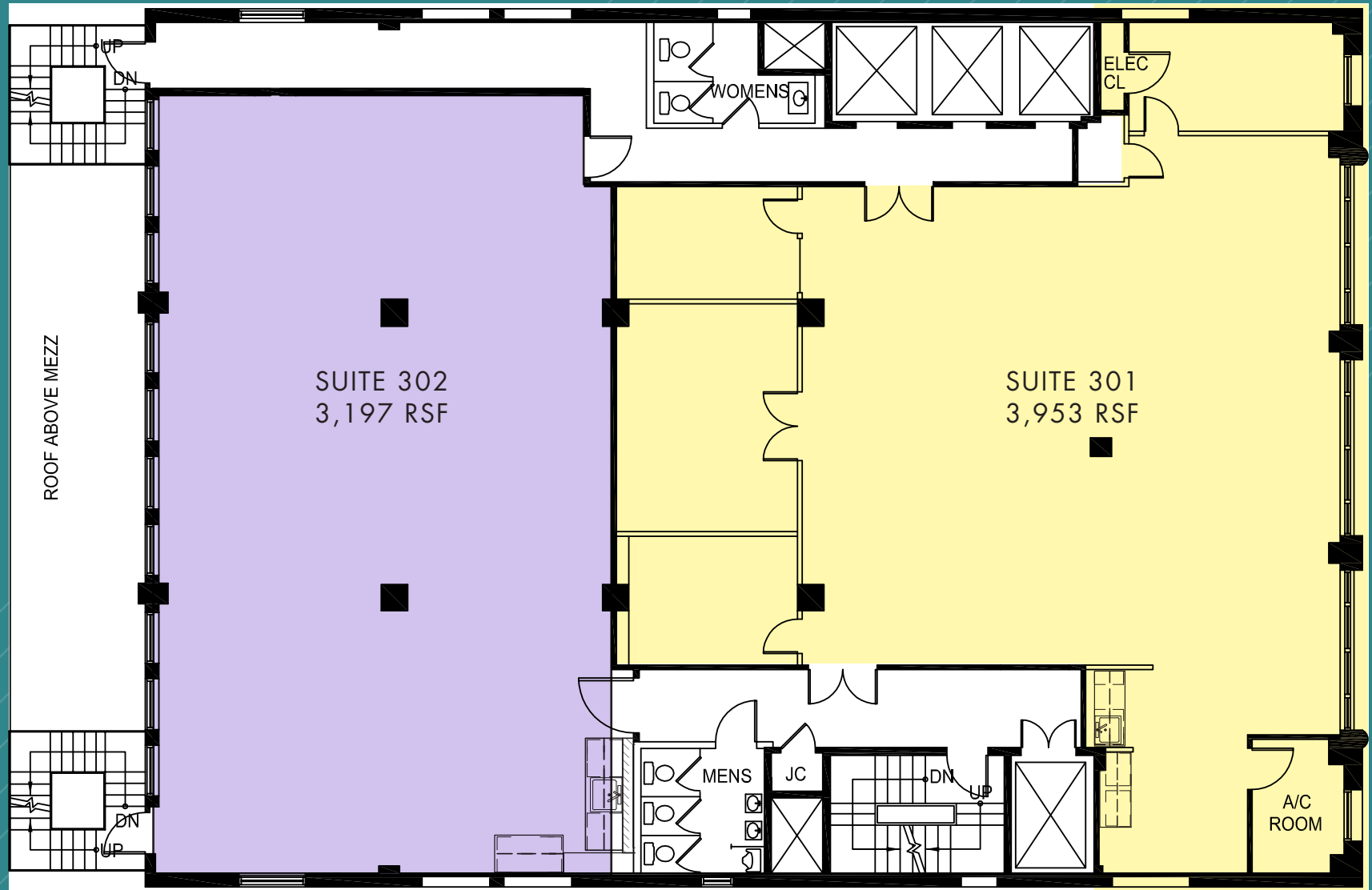
- New move-in ready newly white boxed space featuring new hardwood floors throughout, (1) conference room, (3) offices, wet pantry, large open area, and south exposure providing good natural light

- Central location, walk to Bryant Park, Times Square, Herald Square, Madison Square Garden, and transportation hubs at Penn Station/Moynihan Train Hall and Grand Central Terminal
- Full floors feature 3-sides of operable, oversized windows offering great natural light — Expansion opportunities available
- Fully attended lobby, 24/7/365 access, tenant-controlled A/C





SUITE 301 - 3,953 RSF / SUITE 302 - 3,197 RSF  
(AS-BUILT)



Not to scale, for display purposes only

SUITE 301 - 3,953 RSF  
(EXISTING CONDITIONS)



## LOCATED WITHIN MIDTOWN'S TRANSIT TRIANGLE

**Port Authority  
Bus Terminal**  
12 Mins Walking

**Moynihan  
Train Hall**

**Penn  
Station**  
11 Mins Walking

**Bryant Park**  
3 Mins Walking

29 West  
38th Street

**Grand  
Central  
Station**  
10 Mins Walking

4 5 6 7 S

