



909

THIRD AVENUE



Entire 10th: 31,440 RSF

Partial 14th: 12,221 RSF  
(New pre-built unit)

Possession: Immediate

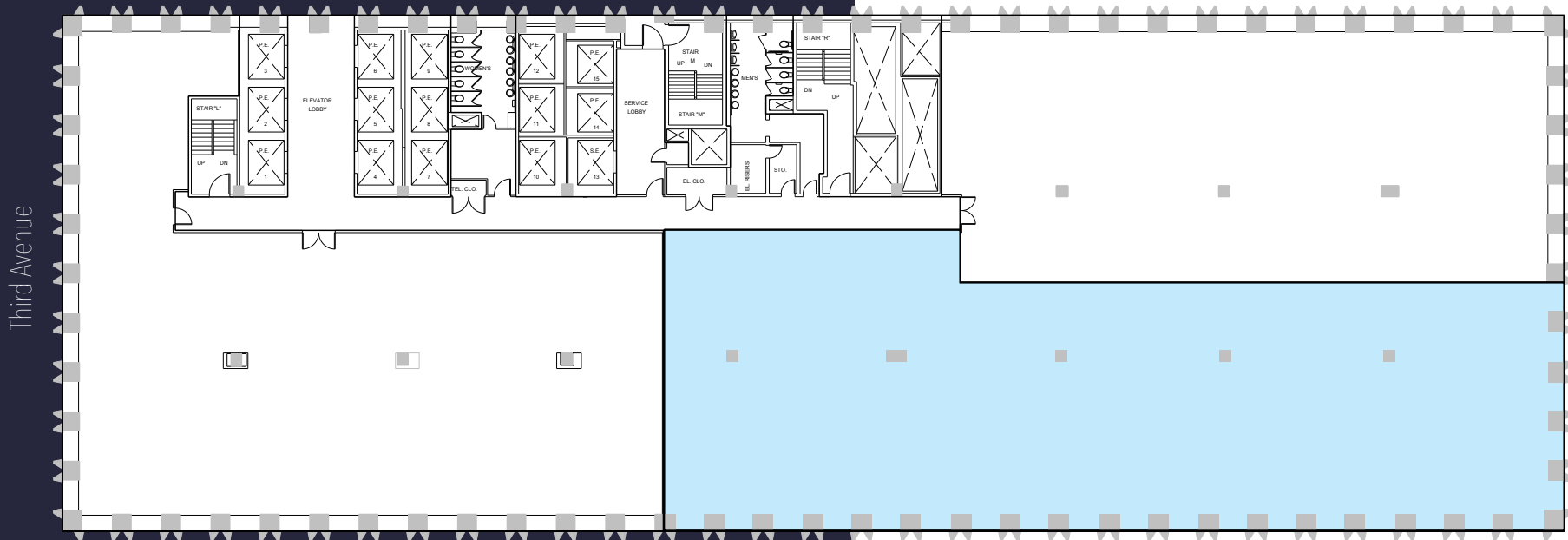


## Comments:

- Recently renovated lobby
- Extended HVAC building hours
- Efficient side core floorplates
- Oversized windows with great natural light throughout

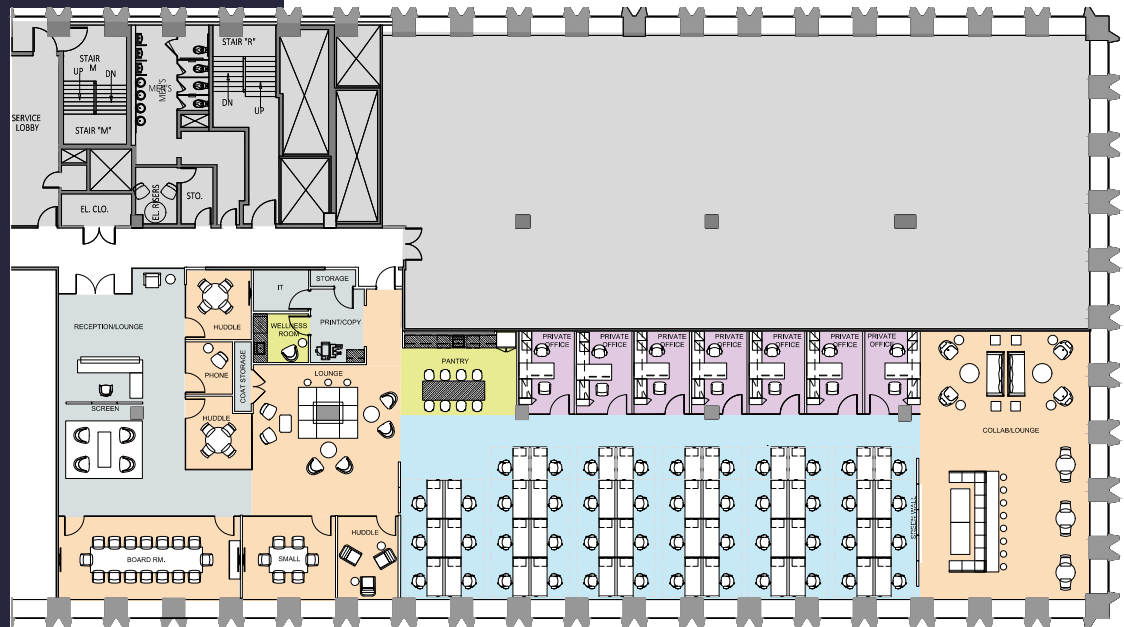
# Partial 14th: 12,221 RSF

East 55th Street

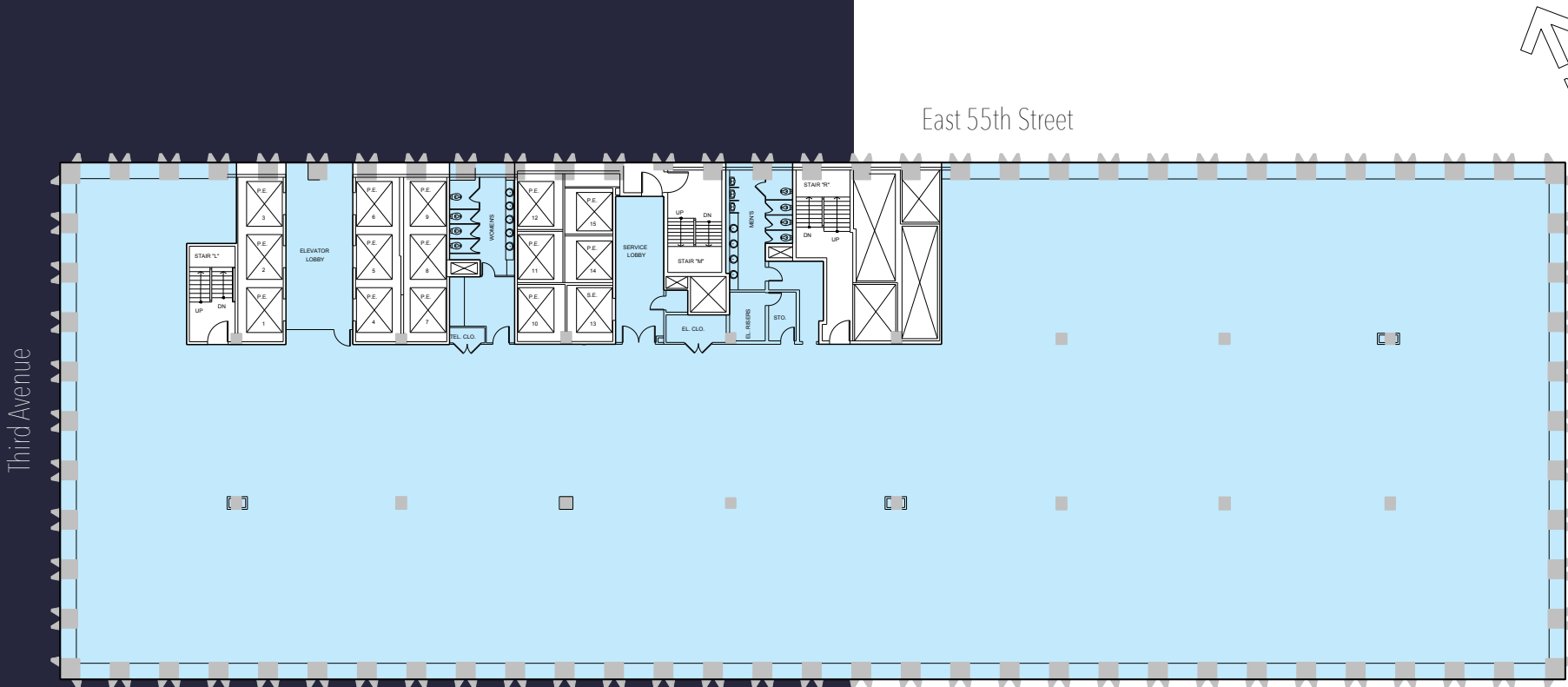


## New Pre-Built Suite:

- 7 Private offices
- 46 Workstations
- Large conference room (14 people)
- Small conference room (4 people)
- Huddle room
- Phone room (1 person)
- Pantry
- Reception
- IT/storage room
- Copy/print room
- Wellness room
- Total head count: 54
- RSF/Person: 219 SF



Entire 10th: 31,440 RSF



# 909

THIRD AVENUE

