

A TIMELESS,
BOUTIQUE
OPPORTUNITY.

REIMAGINED.

717
FIFTH
AVE



AN ADDRESS THAT IS ALWAYS IN STYLE.

717 Fifth Ave is perfectly situated in the Plaza District, steps from Central Park and among some of the city's finest retail, restaurants, and corporate neighbors. The building is currently undergoing an extensive multi-million dollar renovation featuring new finishes and upgrades.



INTRODUCING THE FUTURE OF 717 FIFTH AVE.

- New Lobby with Signage Opportunities
- Large Block with Branding Potential
- Hospitality-Inspired Lobby and Amenity Center
- Pre-Built Program Underway
- Boutique Tower Floors with Unparalleled Central Park Views
- Upgraded Elevator Cabs, Corridors and Restrooms



AN **APPROACHABLE** PLAZA DISTRICT TOWER.

717 Fifth Ave has it all. Timeless elegance, complimented by an extensive modernization, offers unparalleled value unlike many of the surrounding office buildings. Place your company among the world's best, in a location that projects prestige and quality, in an intimate and boutique setting.





INTERIORS THAT MAKE A LASTING IMPRESSION.

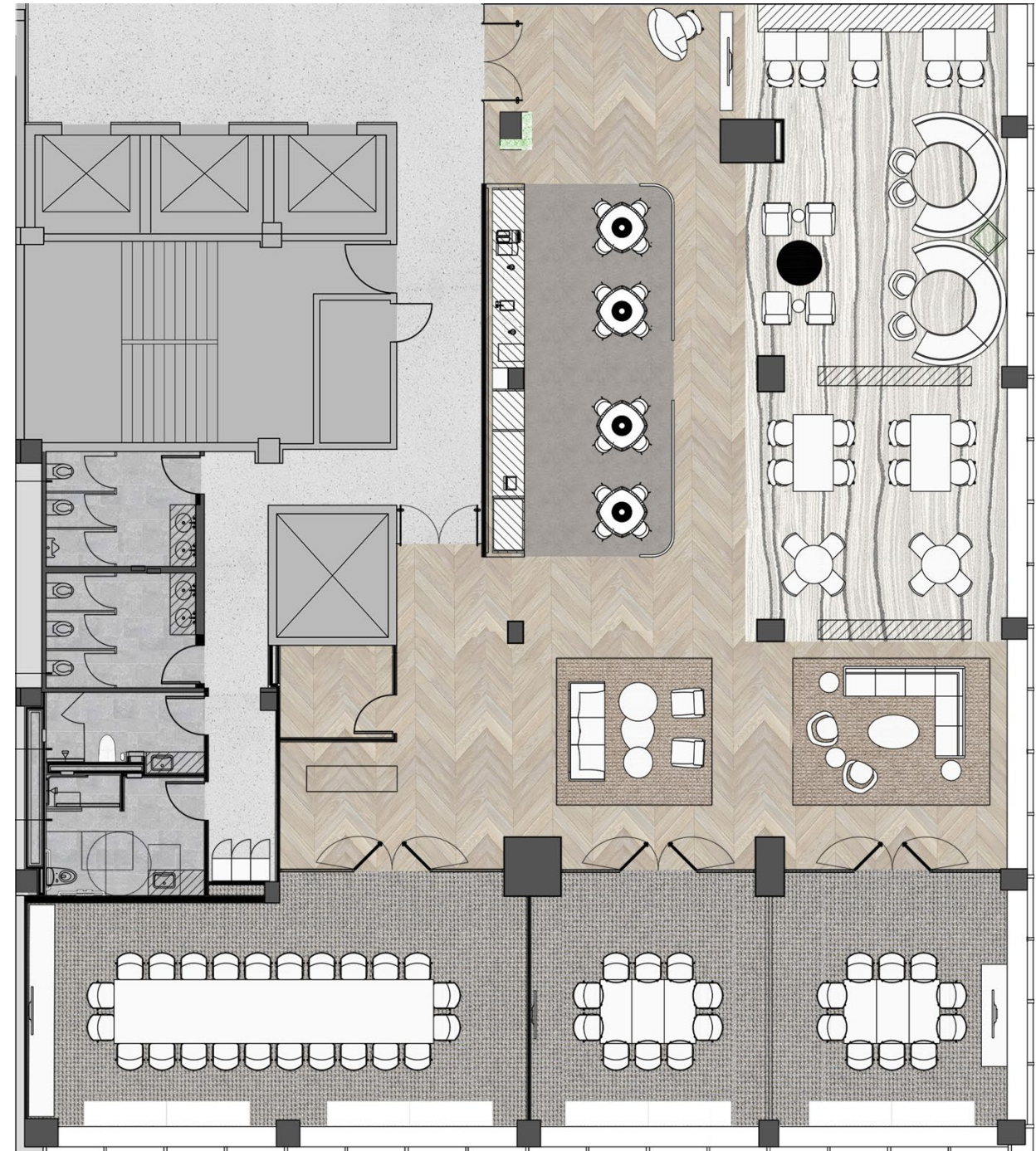
Feel the elegance of 717 Fifth Ave throughout. Tenants and guests are welcomed through a newly imagined lobby—designed by internationally renowned architectural firm Pei Cobb—paired with thoughtfully-crafted enhancements and spaces throughout the entire building.

A robust amenity space has been designed by interior architects MKDA, to infuse creativity, well-being and a hospitality-inspired retreat to your company's workday.





EXCLUSIVE AMENITY LOUNGE & CONFERENCE CENTER.





MAKE CENTRAL PARK YOUR BACKYARD.

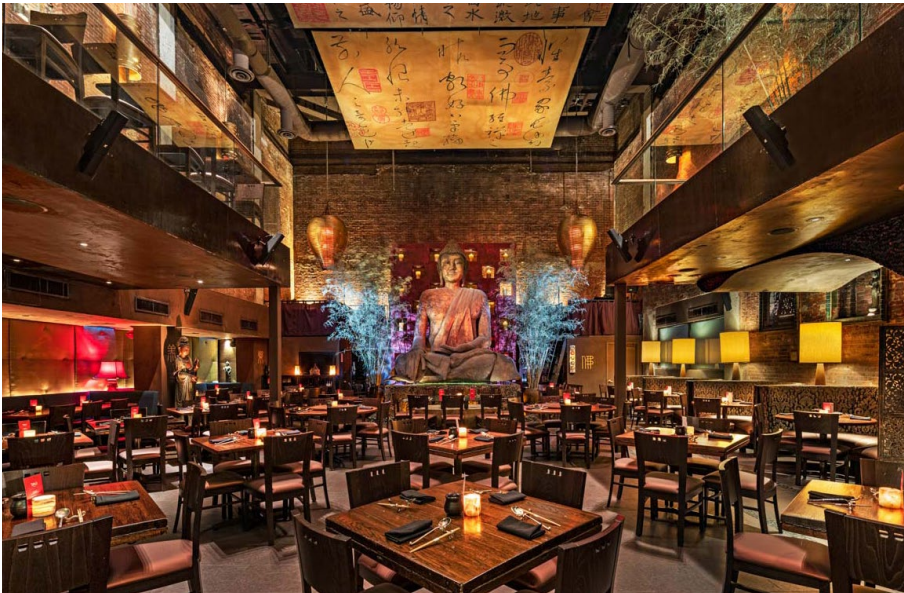
717 Fifth Ave's unbeatable location places your company just three blocks from Central Park. Turn lunch breaks into moments of relaxation and enjoy the fresh air and scenery.



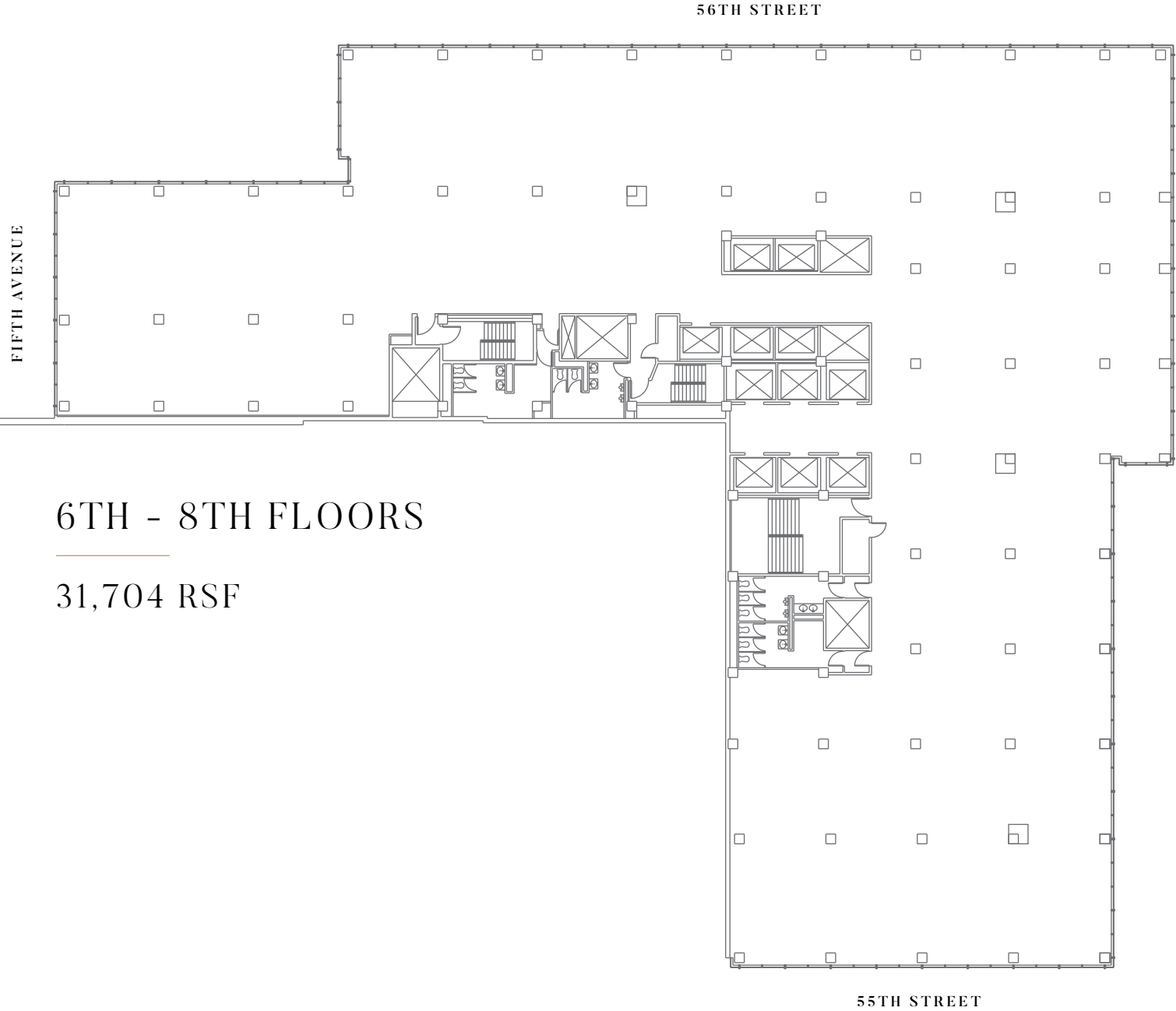


IN THE CENTER OF ELEGANCE.

- RETAIL
 - Apple
 - Bergdorf
 - Goodman
 - Burberry
 - Chanel
 - COACH
 - Dior
 - Louis Vuitton
 - Tiffany & Co.
- RESTAURANTS
 - Aquavit
 - BG
 - Il Mulino
 - Il Tinello
 - Marea
 - Nerai
 - Nobu Fifty Seven
 - Sarabeth's
 - Serafina Osteria
 - Tao Uptown
- HOTELS
 - Four Seasons *(Temporarily Closed)*
 - Loews Regency
 - Pierre
 - The Plaza
 - Ritz-Carlton
 - St. Regis
 - Whitby
- ARTS & CULTURE
 - Carnegie Hall
 - MoMA
 - Museum of Arts and Design
- CITI BIKE LOCATIONS
- TRANSIT



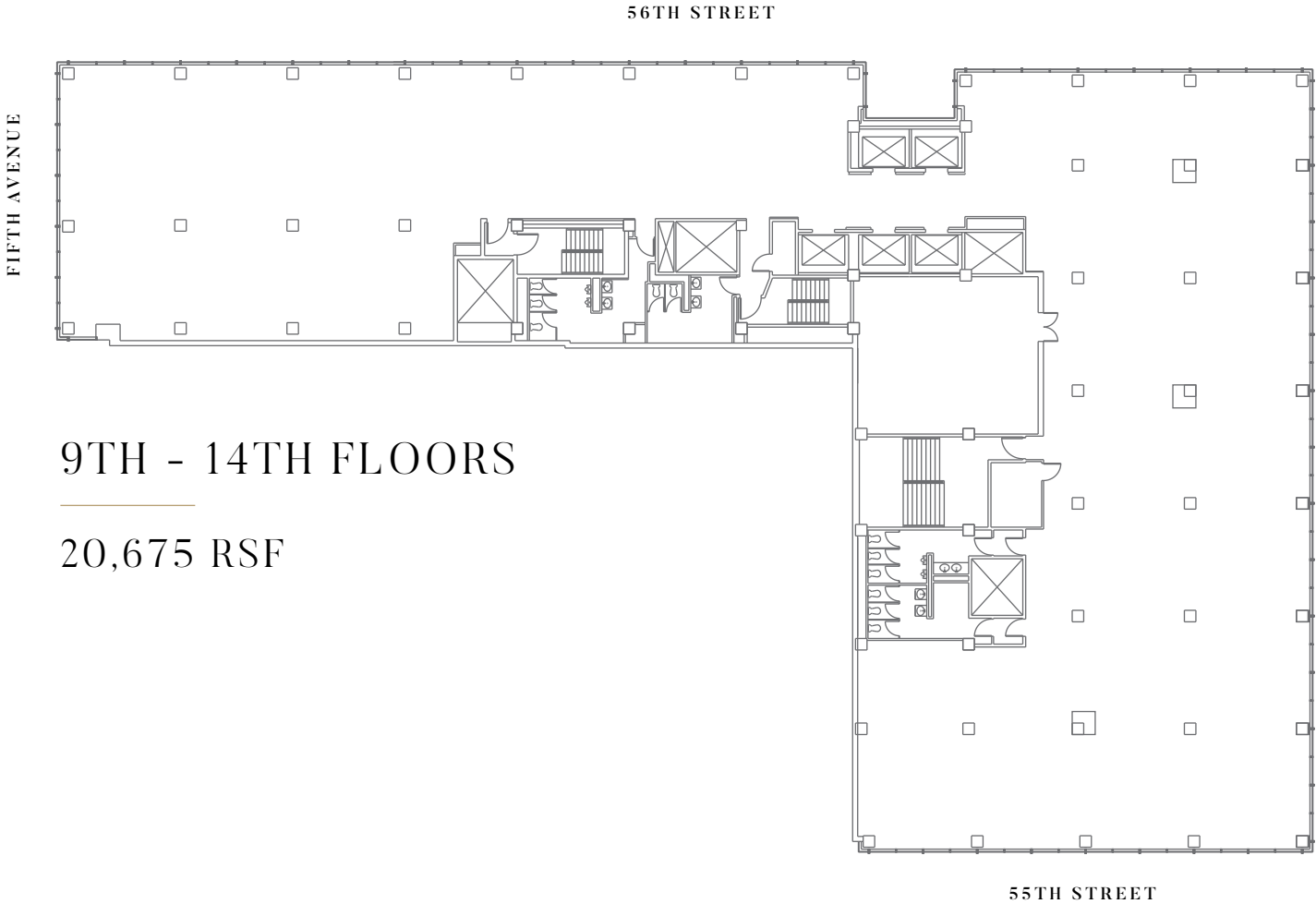
LOW-RISE



6TH - 8TH FLOORS

31,704 RSF

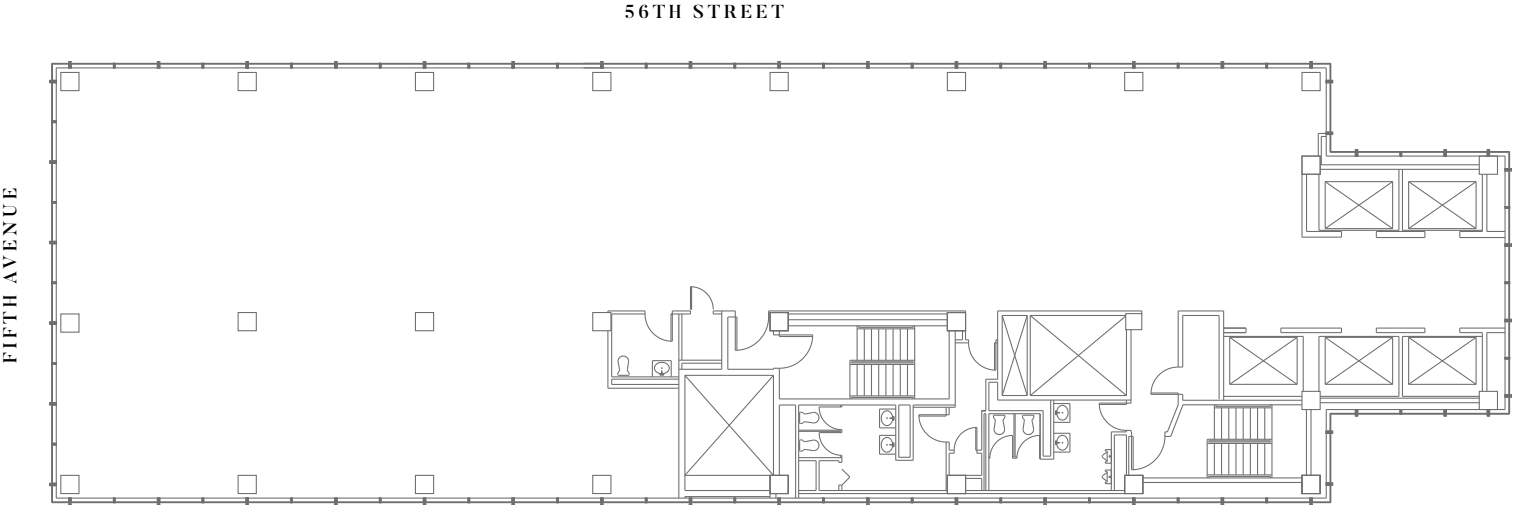
MID-RISE



9TH - 14TH FLOORS

20,675 RSF

TOWER FLOORS



15TH - 26TH FLOORS

8,733 RSF

BUILDING ENHANCEMENTS & OWNERSHIP

- A full lobby renovation, designed by Pei Cobb Freed & Partners.
- A first-class ~8,000 SF amenity center, which will include a tenant only conference center, lounge/collaborative areas, grab and go food service and locker rooms with showers.
- Planned renovation of the common corridors and restrooms on multi-tenant floors.
- Renovation of elevator interiors and modernization of controls with destination dispatch.
- High-end, fully scalable prebuilt office program.
- New low profile and efficient convectors within newly built space expanding the window line significantly.
- On-site property management and ownership.