

A modern office interior featuring a curved ceiling with integrated linear lighting, wooden plank flooring, and glass-walled workstations. A woman is seated at a white reception desk with a red top edge, while a man stands leaning against it. Another man is walking in the background. The space is bright and open, with large windows visible in the distance.

350  
MADISON  
AVENUE

MOVE-IN READY  
74,000 SF BLOCK











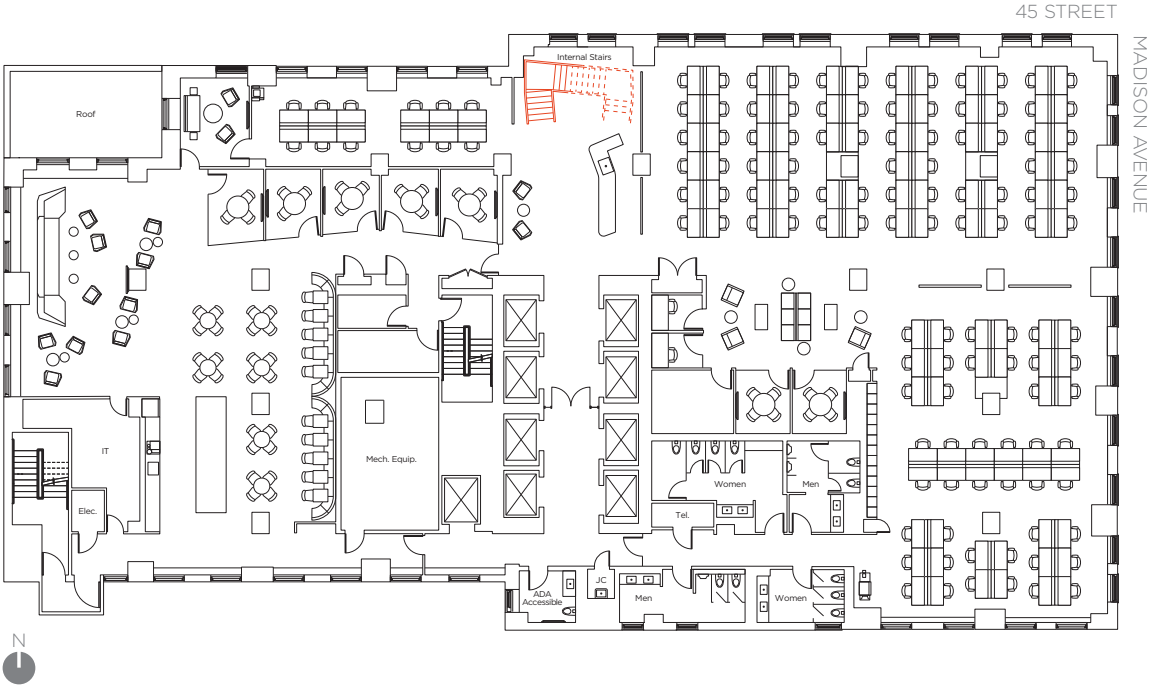






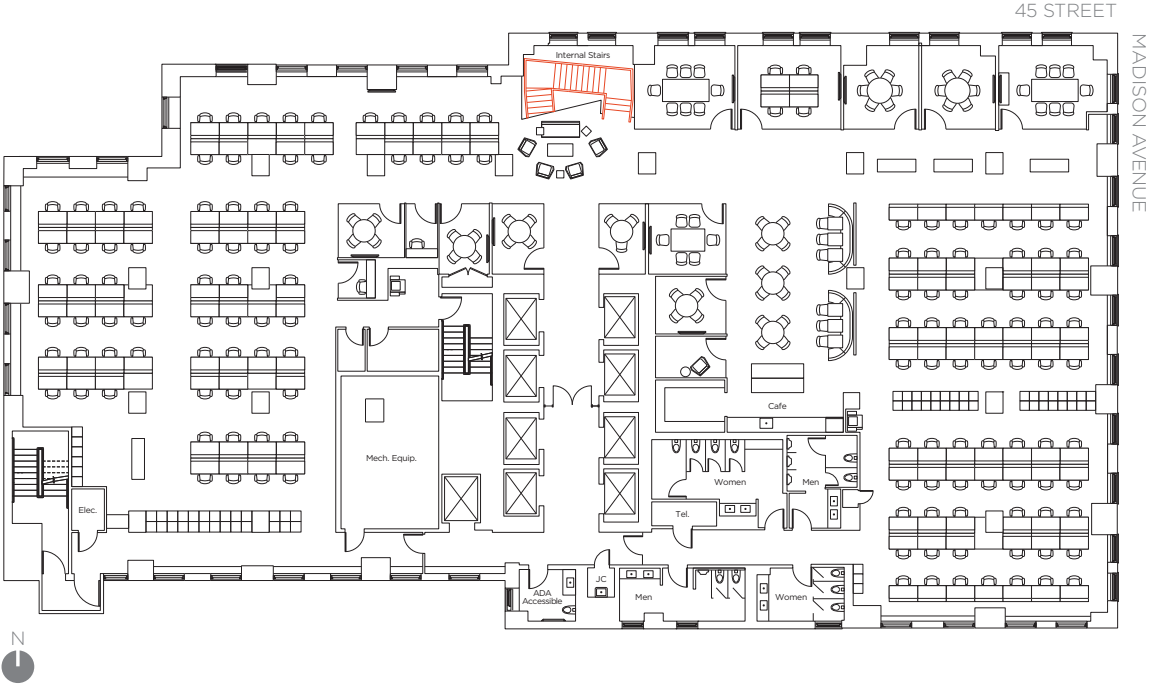
# FULL FLOOR 12

19,038 SF



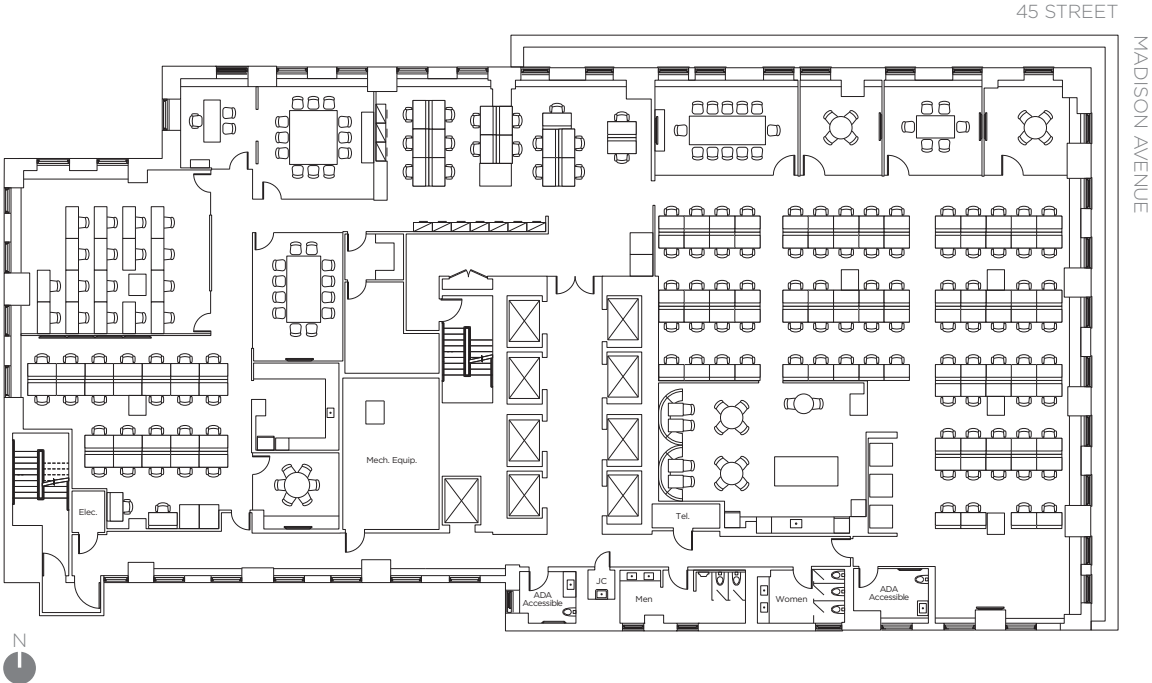
# FULL FLOOR 14

19,038 SF



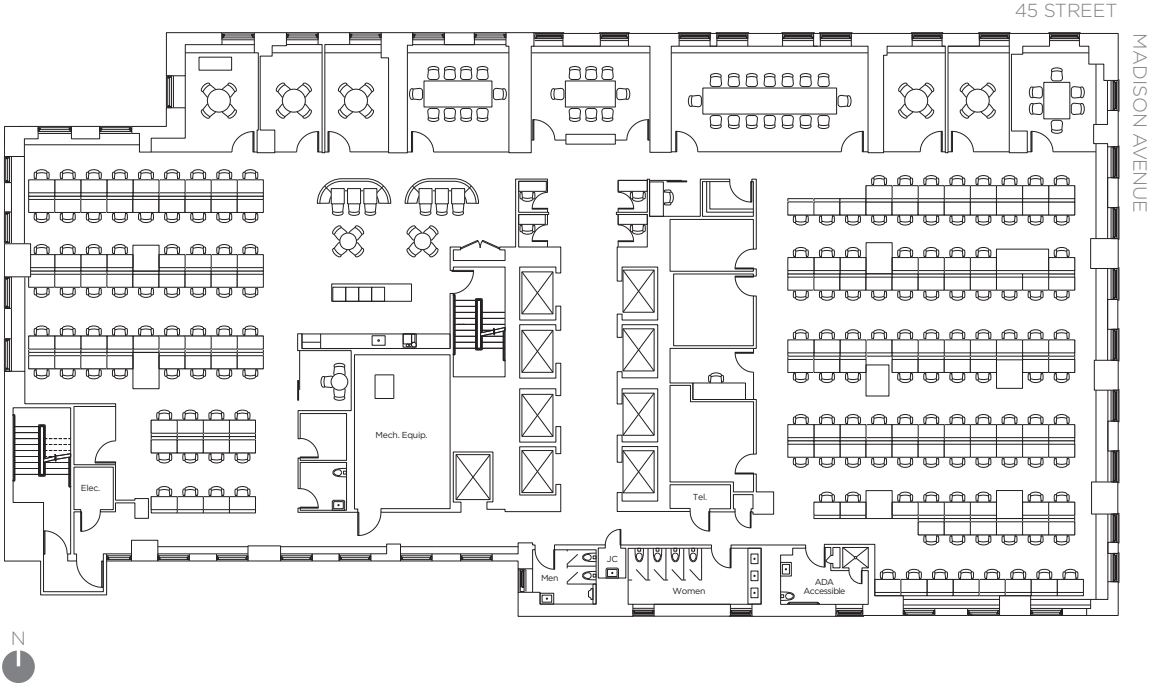
# FULL FLOOR 15

17,690 SF

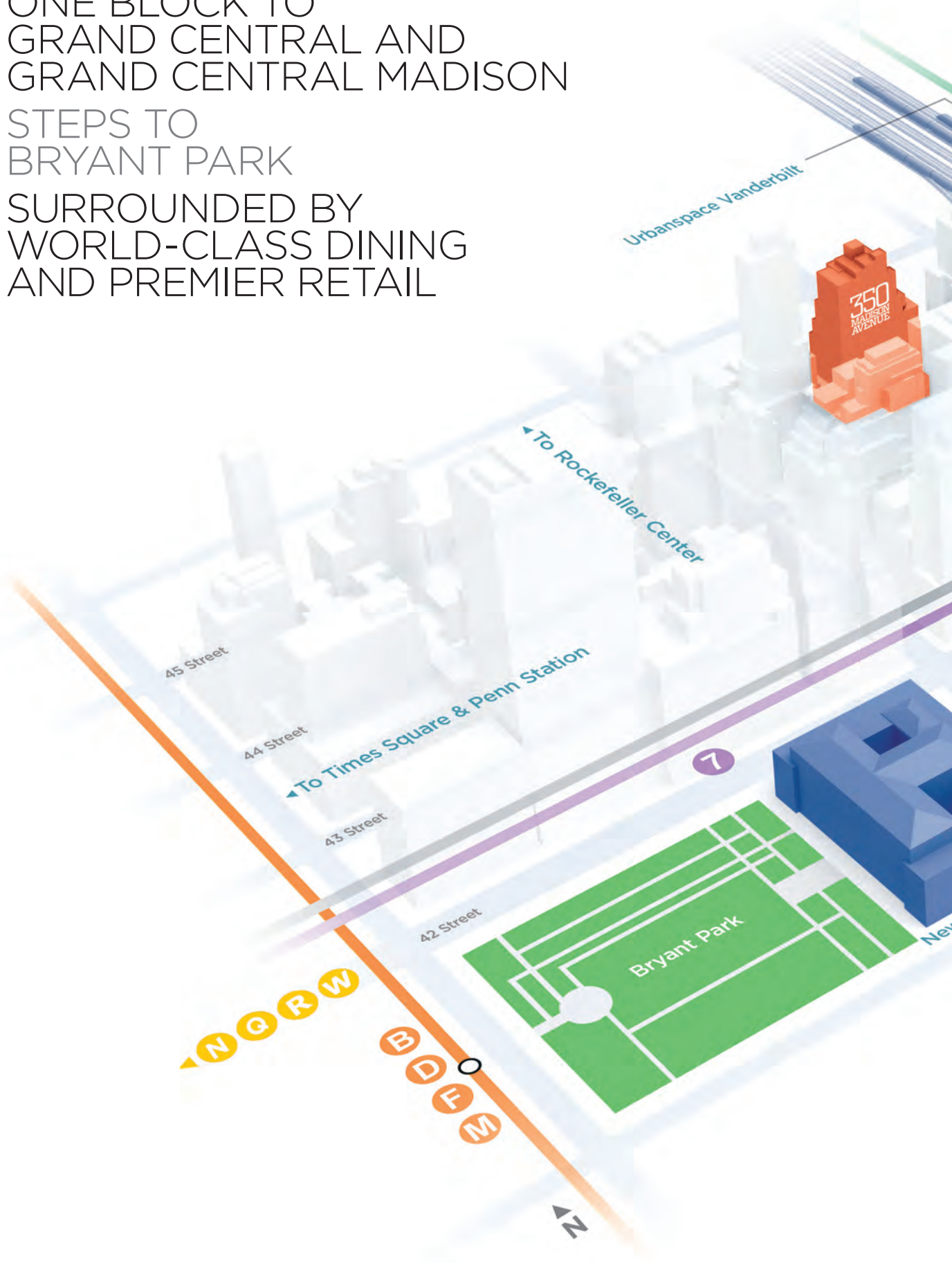


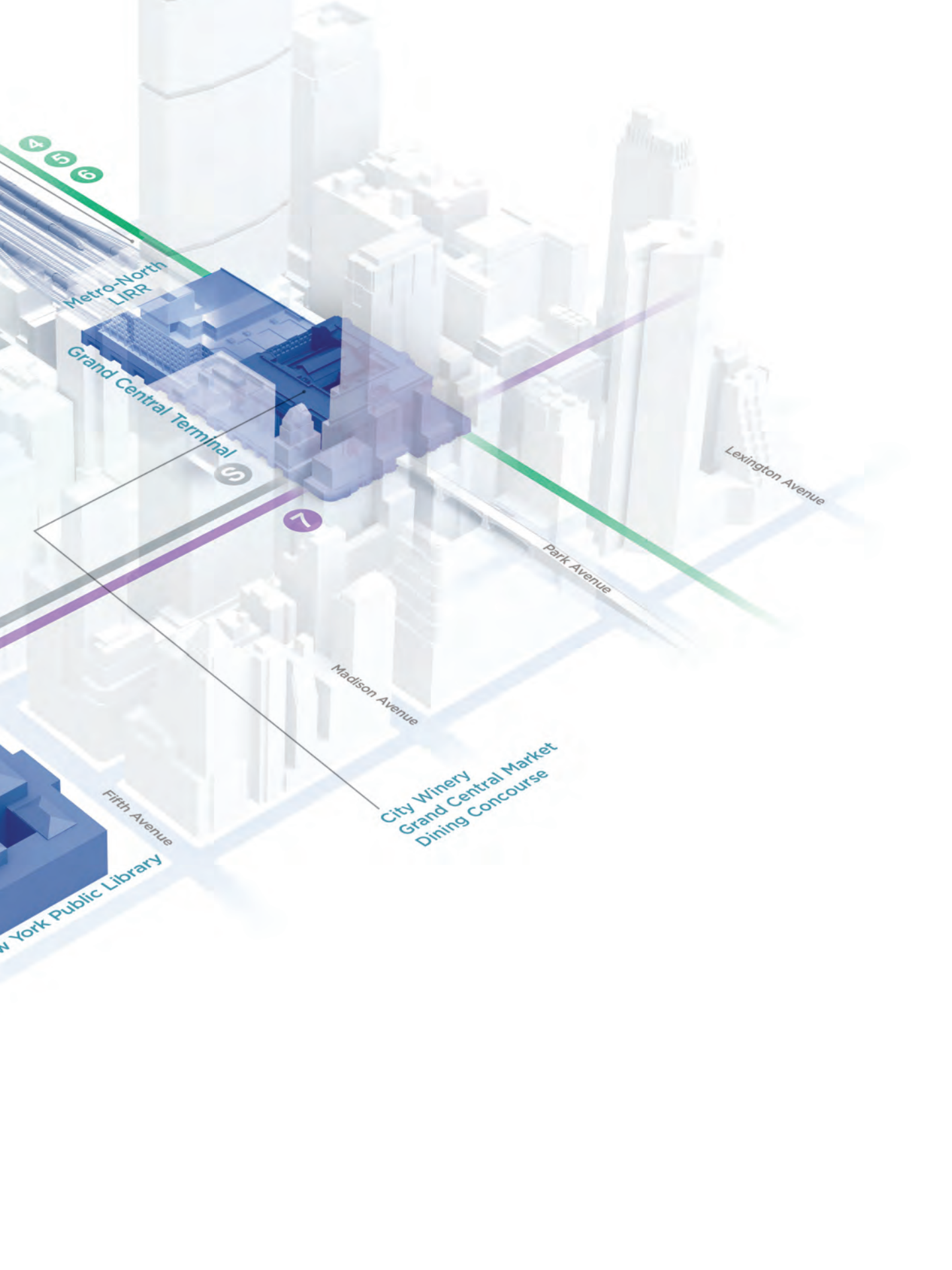
# FULL FLOOR 16

17,690 SF



ONE BLOCK TO  
GRAND CENTRAL AND  
GRAND CENTRAL MADISON  
STEPS TO  
BRYANT PARK  
SURROUNDED BY  
WORLD-CLASS DINING  
AND PREMIER RETAIL





4 5 6

Metro-North  
LIRR

Grand Central Terminal

6

7

Madison Avenue

Park Avenue

Lexington Avenue

Fifth Avenue

New York Public Library

City Winery  
Grand Central Market  
Dining Concourse

