

650

BROADWAY

NOHO, NYC

Between Bleecker & Bond Streets

RETAIL/OFFICE FOR LEASE

APPROXIMATE SIZE

Fourth Floor: 4,000 SF

ASKING RENT

\$15,000/Month

POSSESSION

Immediate

TERM

5-15 Years

CEILING HEIGHT

12 FT

COMMENTS

- Loft-style, open layout office space
- 9 private offices, 2 conference rooms, & reception area
- 2 Bathrooms in place
- Landlord is willing to give discounted rate on rent to take space as-is
- Landlord will consider retail or office use

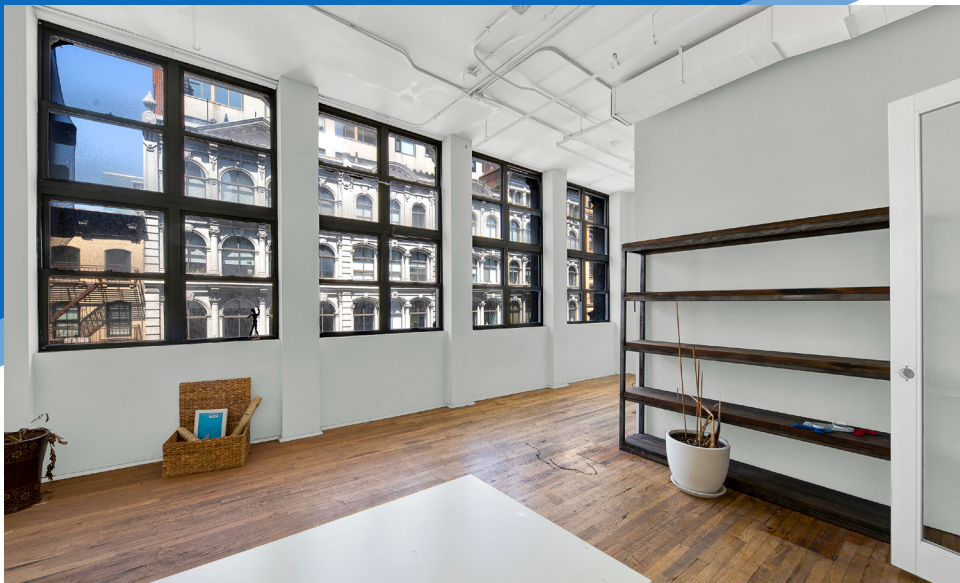
NEIGHBORS

Crate & Barrel • Urban Outfitters • Two Hands
• Kyu • Maria Tash • Emilio's Ballato • Slainte
• 310 Bowery Bar • Bondst • Fish Cheeks

TRANSPORTATION

B D F M R W 6





650 BROADWAY
NOHO, NYC | Between Bleecker and Bond Streets

RETAIL/OFFICE FOR LEASE

NEIGHBORS

