

AVAILABLE FOR SUBLEASE

250 Park Avenue | New York, NY

Westerly block front between 46th St. & 47th St.



NORTHEAST CORNER OF THE 20TH FLOOR: 4,014 RSF

Term | Through December 30th, 2028

Rent | Upon Request

Electricity | Submetered

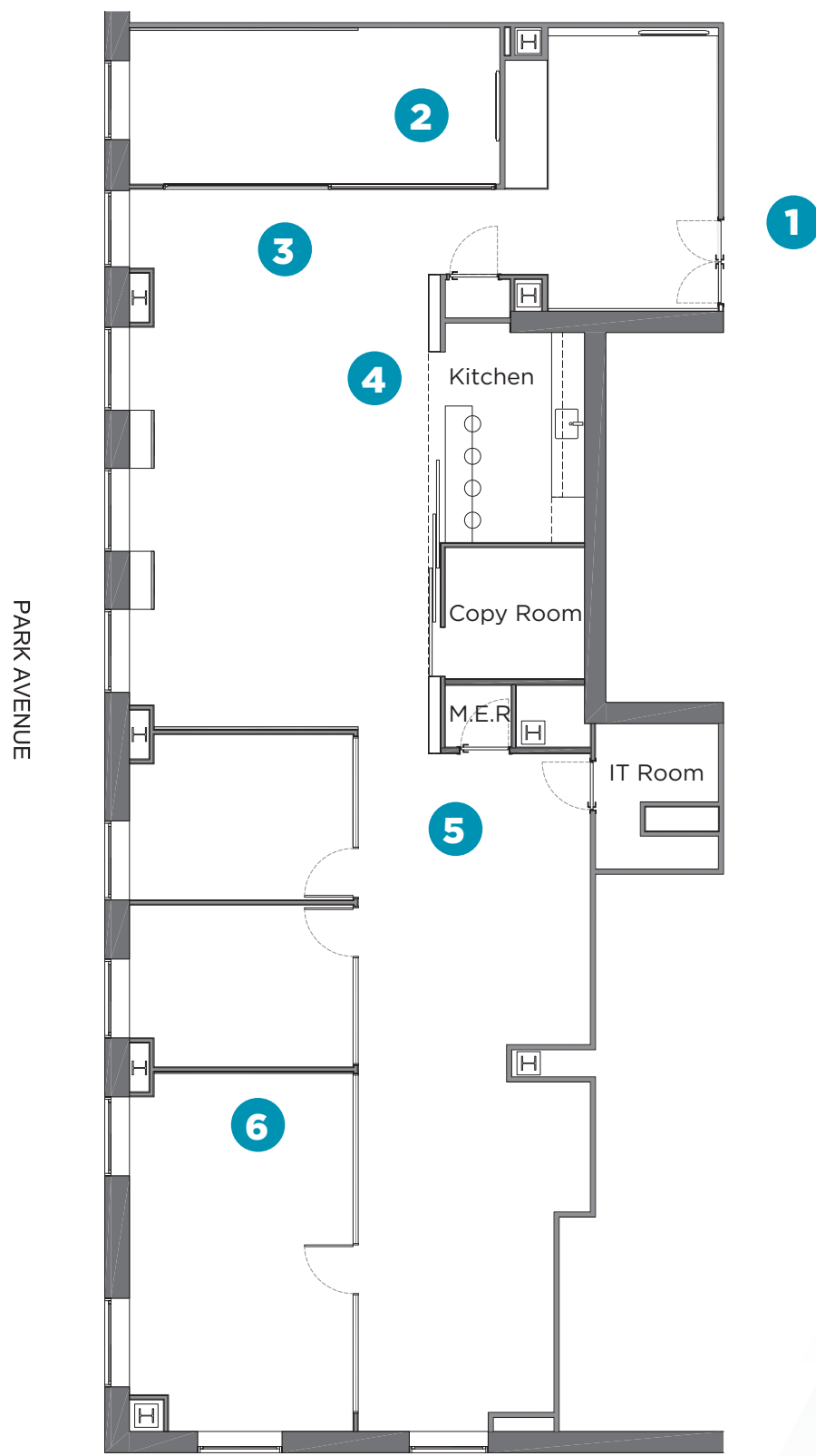
Possession | Immediate

Contact

Building & Space Features

- New modernized lobby with entrances on Park Avenue & Vanderbilt Avenue
- Financially strong landlord
- The space has great views north & east
- Space comes fully furnished and wired
- Strong sublandlord

Floor Plan



EAST 47TH STREET

AVAILABLE FOR SUBLEASE

250 Park Avenue | New York, NY

