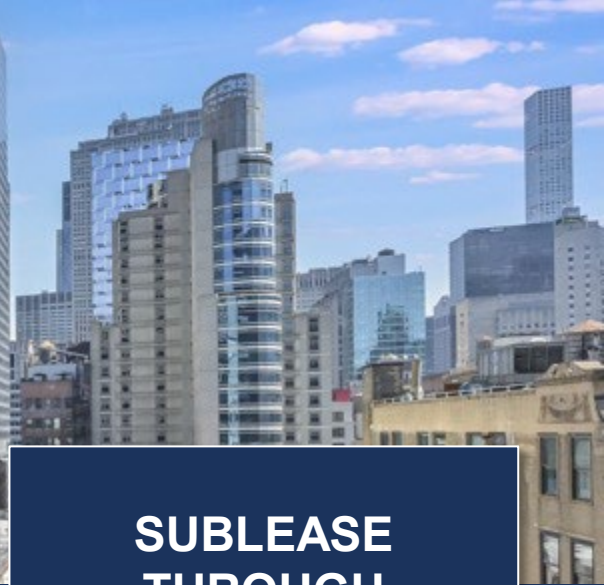




# 1114 Avenue Of The Americas *at Bryant Park*



**SUBLEASE  
THROUGH  
9/29/28**

**Floor**  
Partial 15<sup>th</sup> Floor

**Size**  
4,160 SF

**Availability**  
Immediate

**Rental**  
Upon Request



## **SPACE FEATURES**

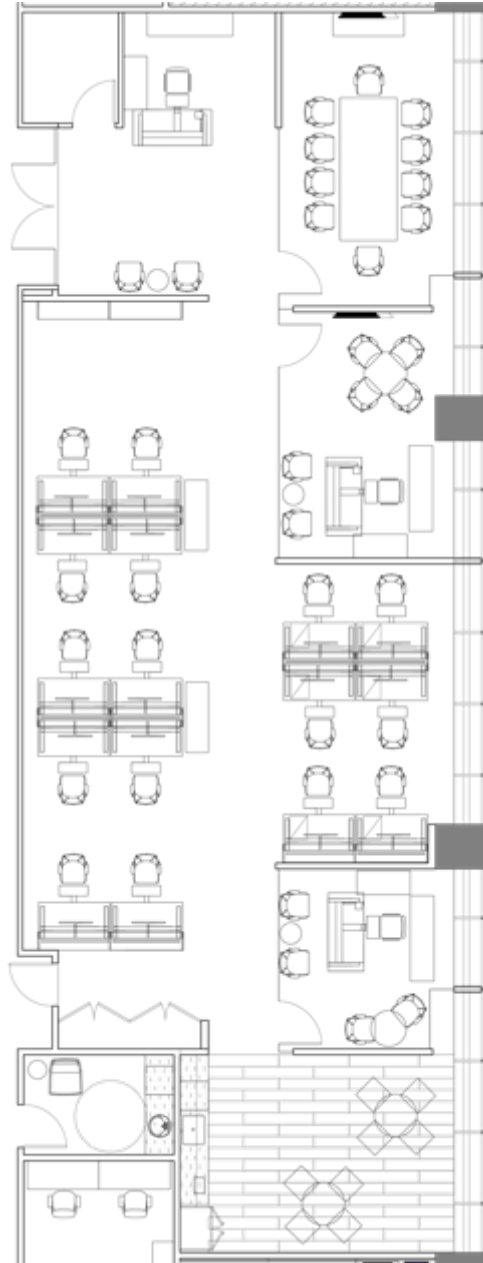
- Prominent exposure off of the elevators
- State of the art furniture systems including standing desks
- Move-In ready
- Possibility to expand to 7,000 SF
- High ceilings with floor to ceiling windows

## **BUILDING FEATURES**

- 24/7 attended and newly renovated lobby
- Excellent access to transit
- Iconic building



# 1114 Avenue Of The Americas *at Bryant Park*





# 1114 Avenue Of The Americas *at Bryant Park*

