



30 Central Park South

Entire Penthouse

New York, NY

F O R L E A S E



Property Highlights

ENTIRE PENTHOUSE FLOOR - 4,268 RSF

Between Fifth & Sixth Avenues

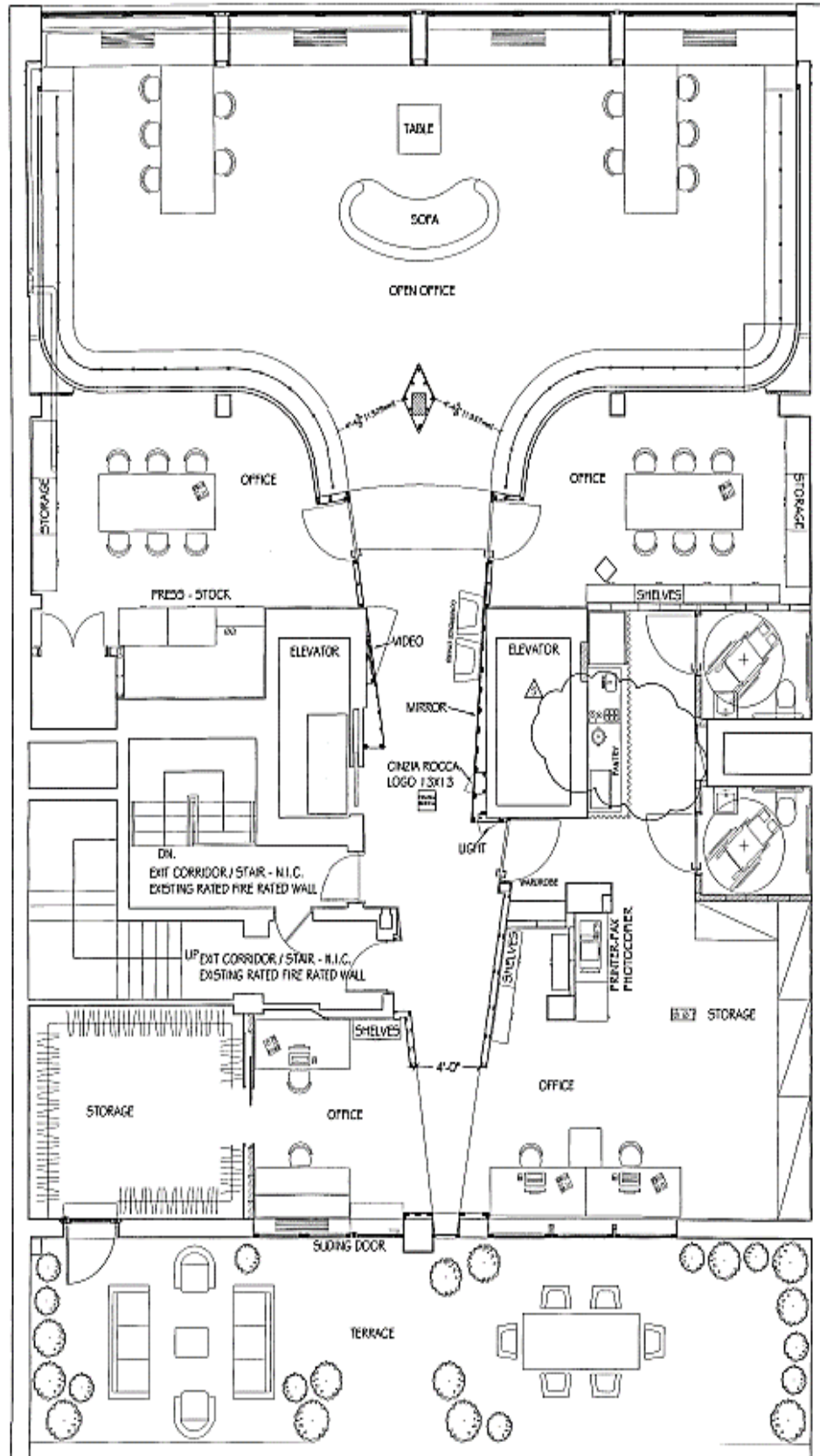
SPACE FEATURES:

- ✓ Entire Penthouse floor featuring unobstructed panoramic views of Central Park
- ✓ Private outdoor terrace (752 RSF)
- ✓ Built space with 3 conference rooms, large open area overlooking Central Park, kitchen, office space, storage areas, 2 private restrooms
- ✓ Attended lobby

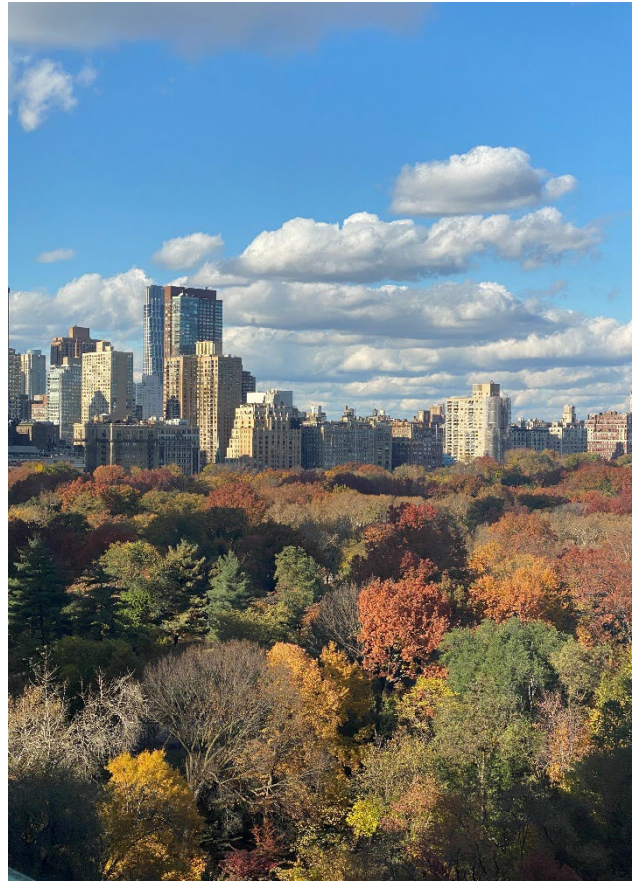
POSSESSION: Immediate

TERM: Negotiable

As Built Conditions



Photos



Photos



Location

