

EXCLUSIVE OFFICE LISTING

36 COOPER SQUARE

VIRTUAL
TOUR OF
6TH FLOOR



36 COOPER SQUARE

Built in 1930, 36 Cooper Square is an iconic mid-century building that was home to the legendary Village Voice news publication for over 20 years. Now available in this 7-story building are three, move-in ready offices on the 4th, 5th, and 6th floors. All three are fully built with the 6th floor spanning across an entire floor. Each is equipped with conference rooms and private offices as well as a kitchen pantry and private restrooms. Located across the street from Cooper Triangle Park, the building sits in the heart of a rapidly growing area. On the next block south is 360 Bowery: a 100,000 SF mixed-use development opening in Fall 2024. This dynamic neighborhood is also home to several renowned restaurants, hotels, parks, and cultural landmarks.

LOCATION Between Lafayette Street & the Bowery

AREA (approx.) Rear 4th Floor 4,315 RSF

CEILING HEIGHT 10'

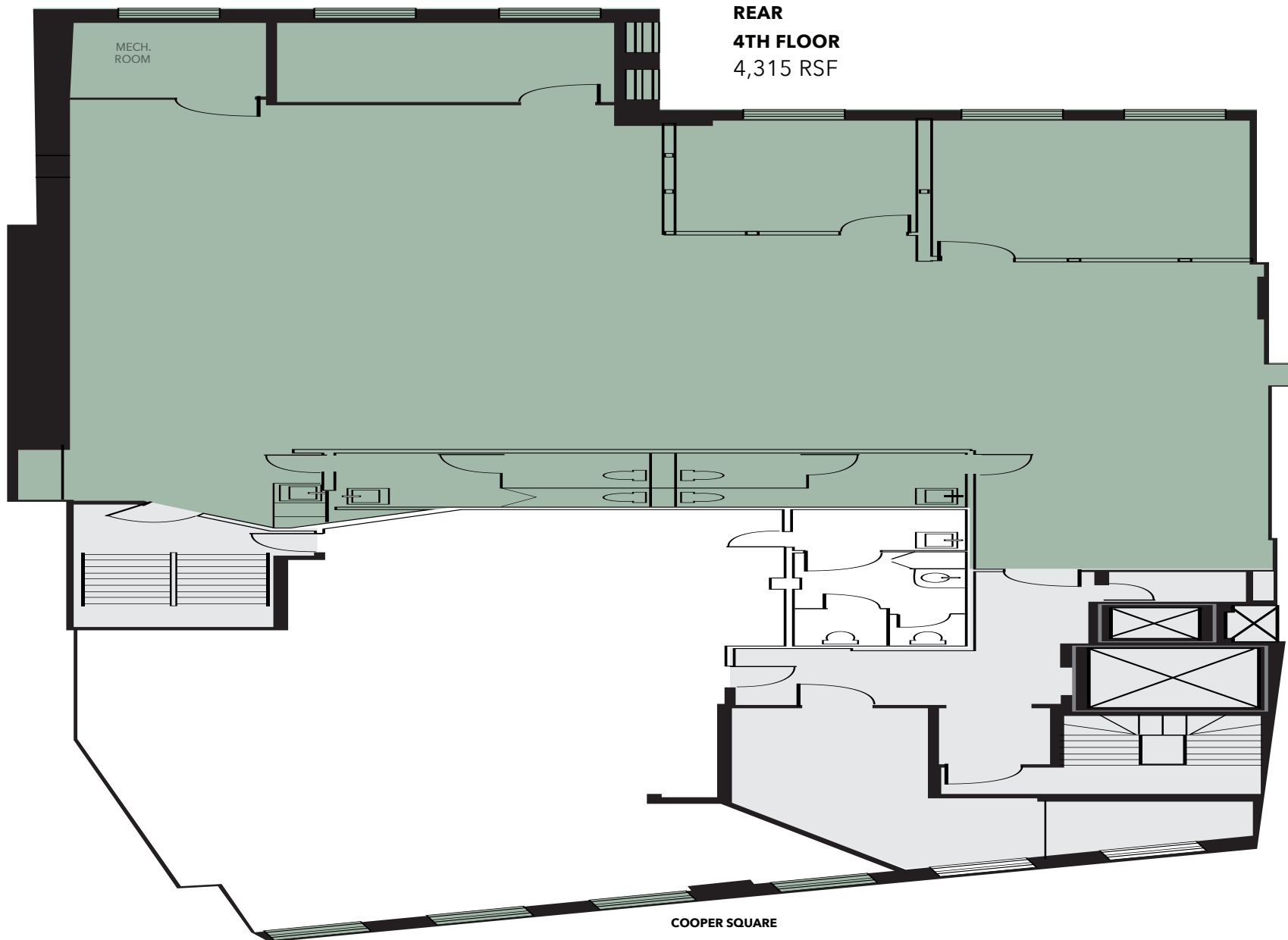
POSSESSION 4th Floor Immediate

- COMMENTS**
- Turnkey offices located at the crossroads of NoHo, Astor Place, and the Bowery
 - The 4th and 6th floors are fully built with two conference rooms and two private offices
 - Doorman-attended lobby with 24/7 access and a large passenger elevator
 - In close proximity to the N Q R W 4 5 6

**GET TO & FROM
EVERYWHERE**

Grand Central	8 min
Penn Station	13 min
Herald Square	8 min
Union Square	5 min
Fulton Street	8 min
Brooklyn	20 min
Queens	20 min
New Jersey	25 min
LGA Airport	25 min
JFK Airport	35 min
NWR Airport	35 min

36 COOPER SQUARE



36 COOPER SQUARE

6TH FLOOR



36 COOPER SQUARE

6TH FLOOR



36 COOPER SQUARE

6TH FLOOR



36 COOPER SQUARE

6TH FLOOR



36 COOPER SQUARE

