

225

WEST 35TH STREET

Suite 1100: 4,400 SF
TURNKEY, FURNISHED + WIRED

SPACE FEATURES

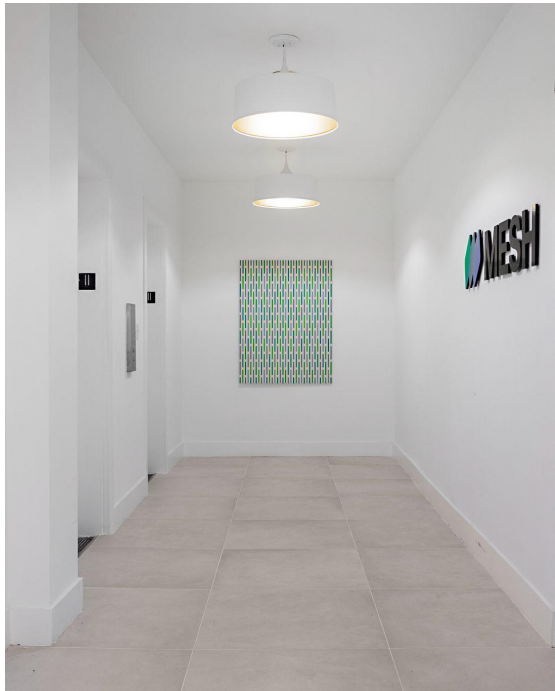
- Large open space w/ 6 conference/breakout rooms
- Outstanding natural light facing front/south
- Hardwood floors, 10'7" ceilings, full wall of operable windows
- Wet pantry w/ dishwasher, & 2 private bathrooms
- 24/7 Tenant-controlled central air
- Hardwood floors + exposed ceilings, full wall of operable windows

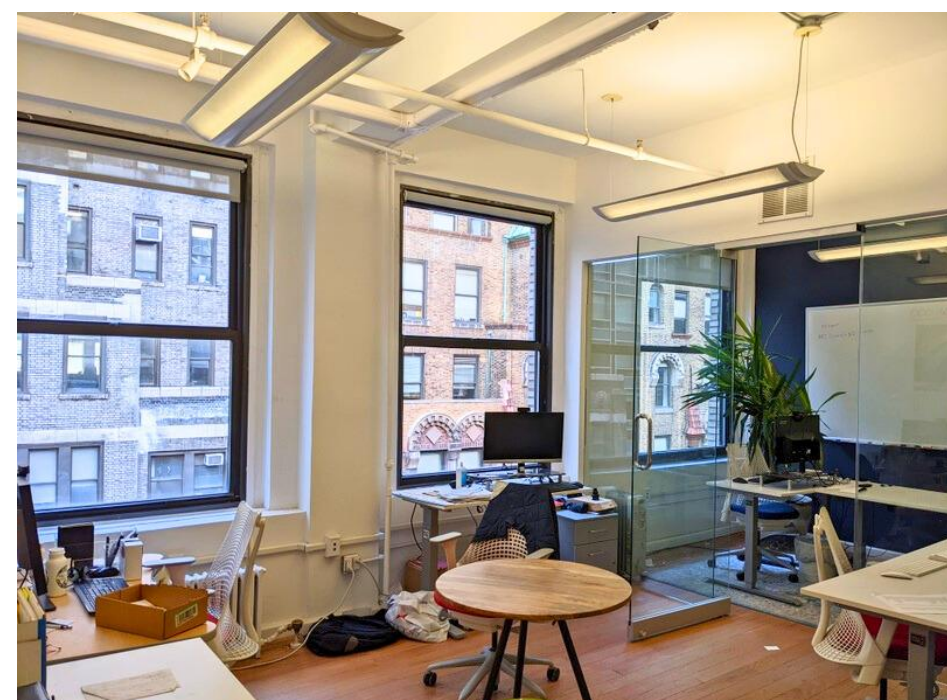
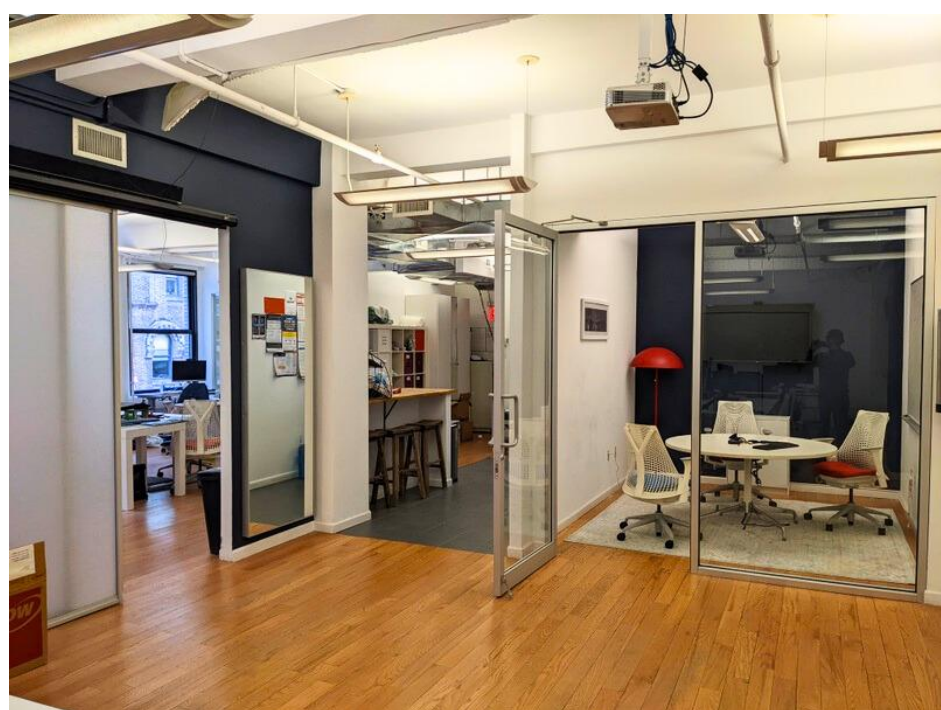
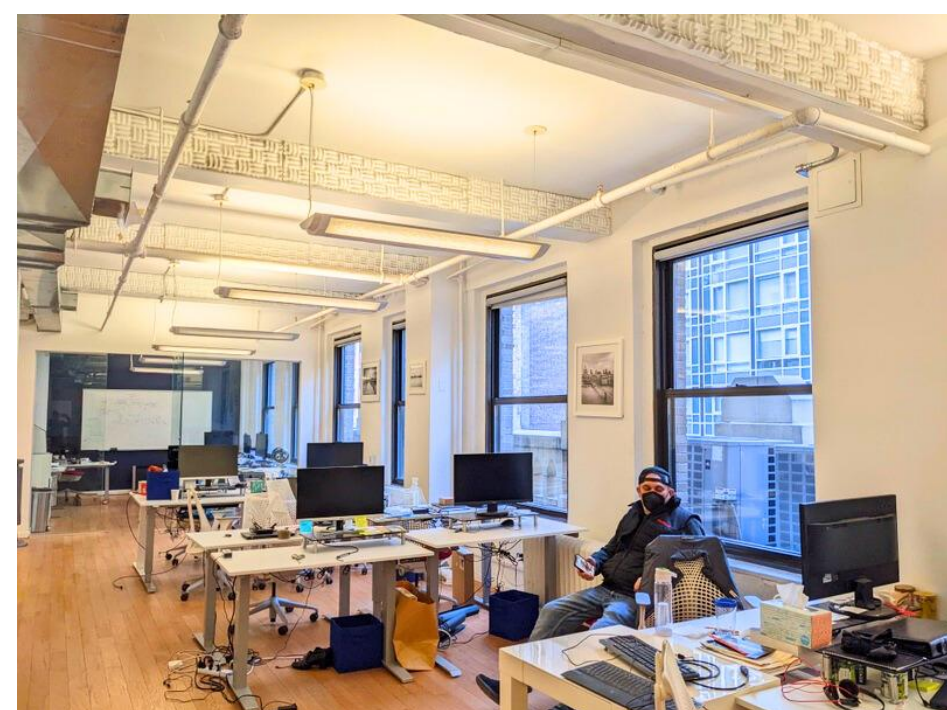


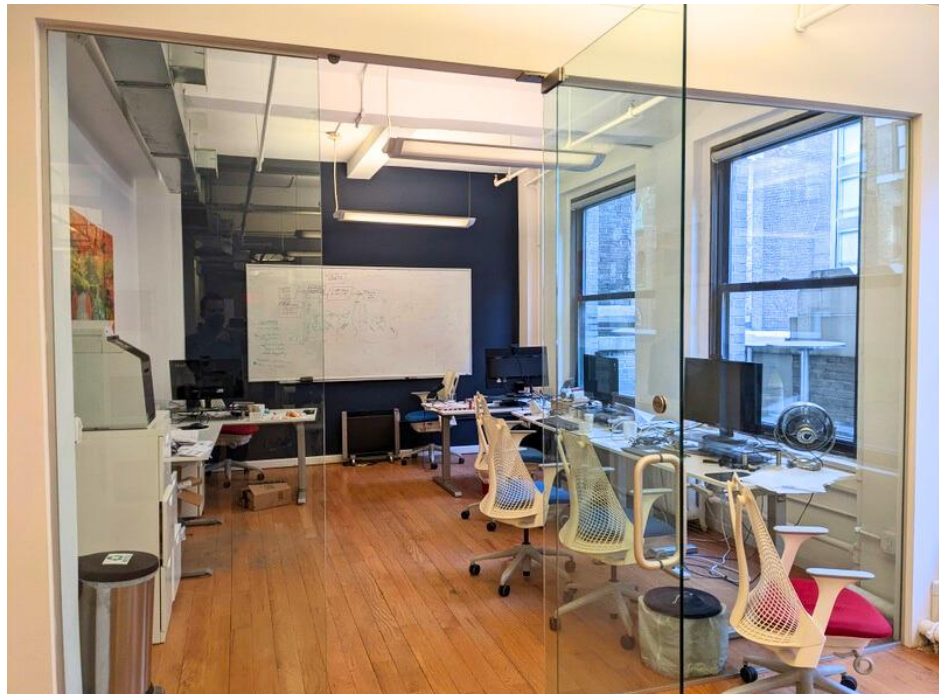
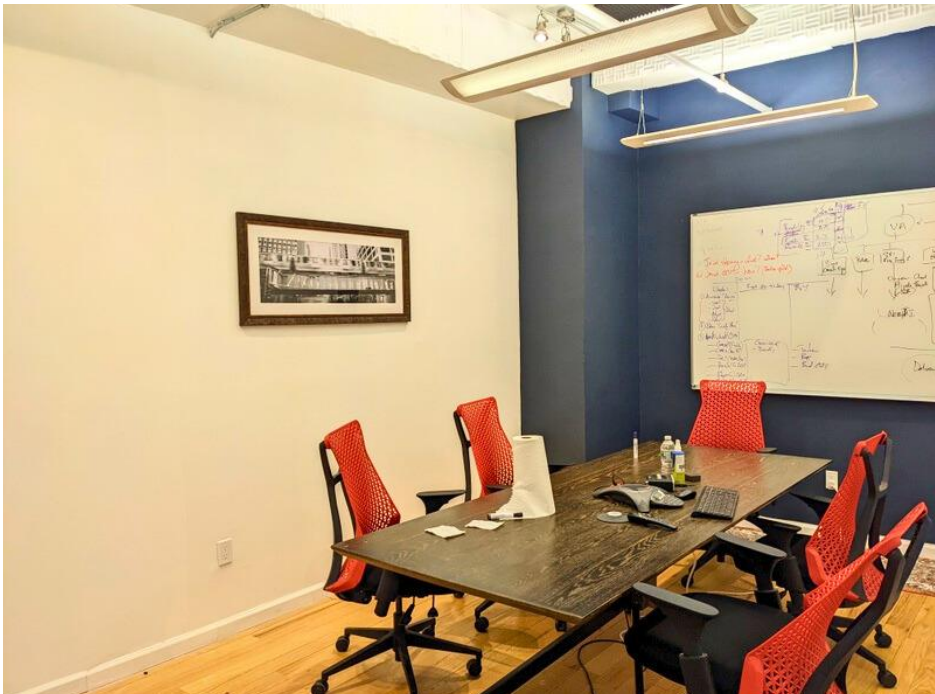
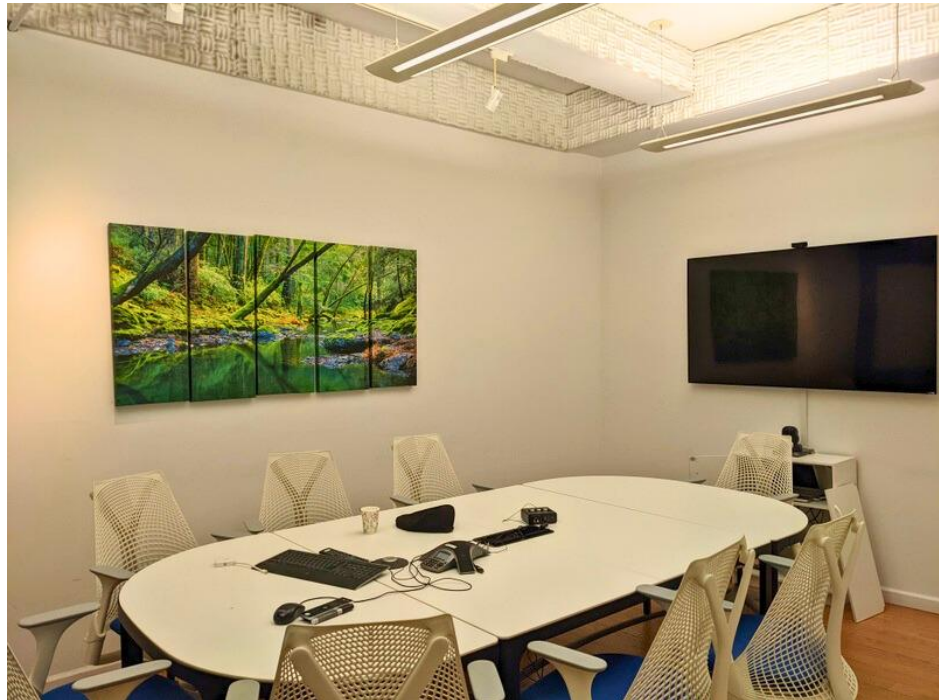
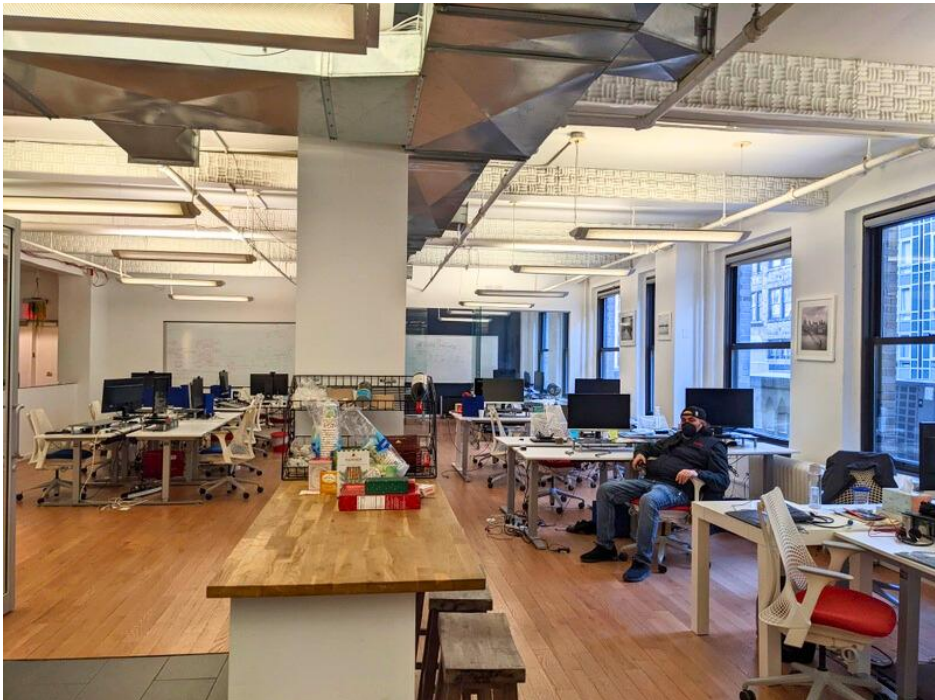
BUILDING FEATURES

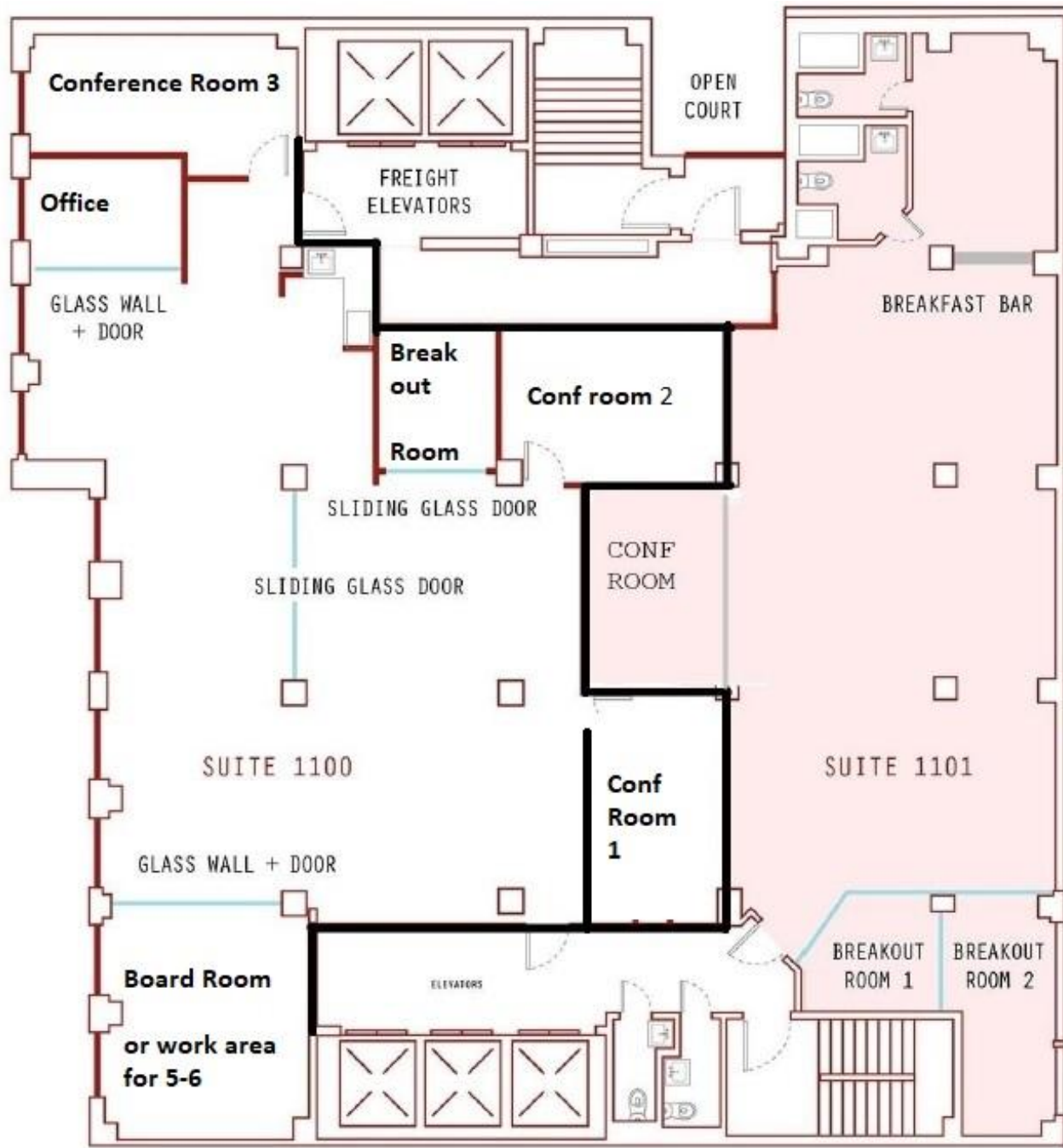
- Renovated, attended white marble lobby
- 3 newly redesigned passenger elevators
- 2 fully automatic, very large, freight elevators
- Wired for Pilot Fiber, Verizon FiOS, Spectrum
- Owner occupied building
- New Openpath Access System

NEARBY TRAINS











42nd St.
41st St.
40th st.
39th st.
38th st.
37th st.
36th st.
35th st.
34th st.
33rd st.
32nd st.
31st st.
30th st.
29th st.

8th Ave.
7th Ave.
6th Ave.
5th Ave.



225
WEST 35TH STREET

Liberty Bagels
#1 ranked bagels in NYC

Best Bagels
Ground floor of 225 W 35 St.

USPS
Open until midnight 7 days/week

NJT/LIRR/Amtrak
Madison Square Garden
At Penn Station

NY Pizza Suprema
#1 ranked slice of pizza in NYC

Bryant Park

A C E

S 1 2 3 7

N Q R W

B D F M

A C E

1 2 3

N Q R W B D F M F

