



333 Park Avenue South

Partial 3rd Floor | 4,500 RSF

333 Park Avenue South

A bright sun-filled corner unit, with loads of architecture character and appeal.

Unit #3BC offers a fully built office solution at Historic 333 PAS. Adorned with oversized windows overlooking Park Avenue South and 25th Street, high 11' ceilings, wood floors, exposed brick, a large renovated kitchenette, and private restrooms. The current layout is configured with two glass conference rooms, 3 windowed offices and 4 internal offices. There is a large open bullpen, flooded with natural light, which offers seating for up to 20 workstations. The space also offers a split-level wing, perfect for a library, team room, or soft-seating lounge. The space is best suited for Architects and Interior Designers, Tech, Creative and Media uses, but an excellent opportunity for a special office with wow-factor.

333 PAS is a Historic Mixed-Use building offering 24/7 Access to tenants, Secure Entry, Elevator, full-time on-site Superintendent, and Easy Accessibility to all major transportation.

Space: Unit 3BC

Size: 4,500 RSF

Term: 3-10 Years

Rent: Negotiable | Upon Request

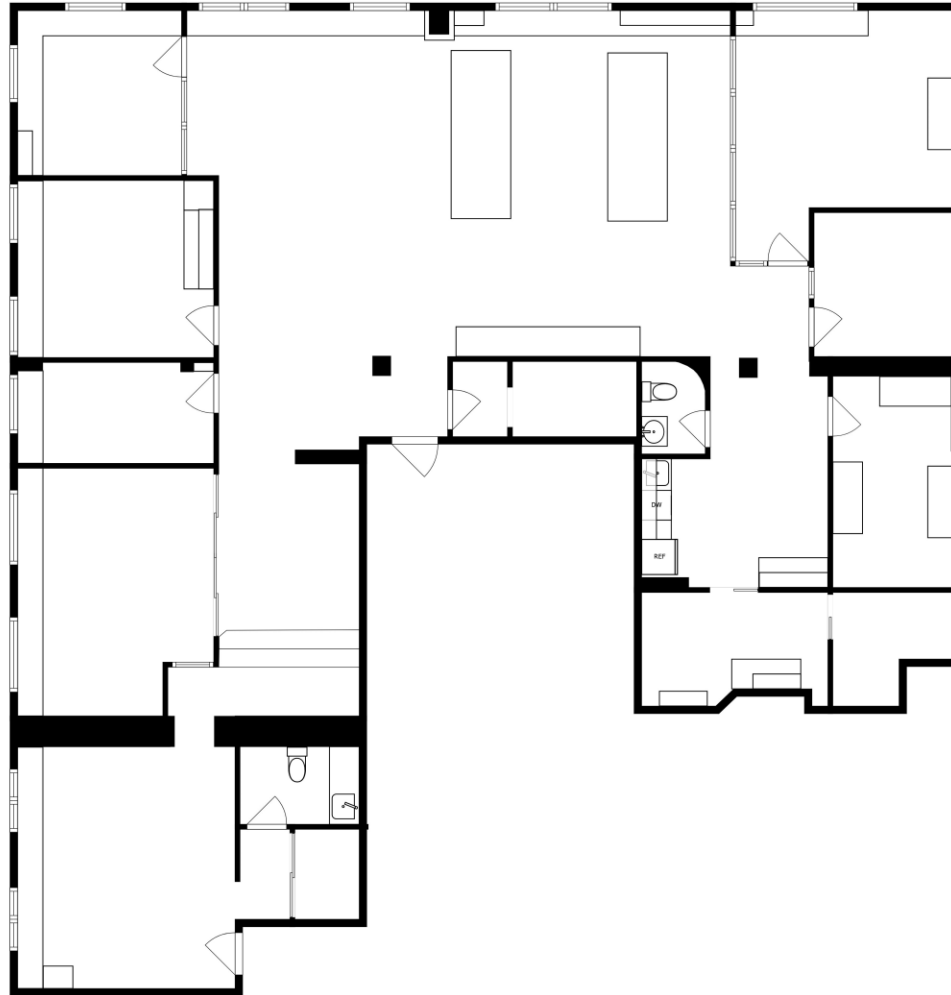


333 Park Avenue South

Floor Plan – Unit 3BC

Highlights:

- Corner Unit
- Oversized Windows
- Bright City Views
- High Ceilings - 11'
- Exposed Brick
- Wood Floors
- 2 Glass Conference Rooms
- 7 Offices
- Large Open Bullpen
- Wet Pantry
- 2 Private Restrooms
- IT Closet (*Fios Available)
- Partially Furnished
- Tenant Controlled HVAC
- Elevator Access



SIZES AND DIMENSIONS ARE APPROXIMATE, ACTUAL MAY VARY.



