

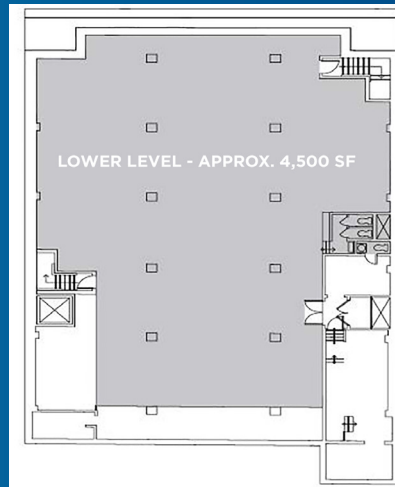
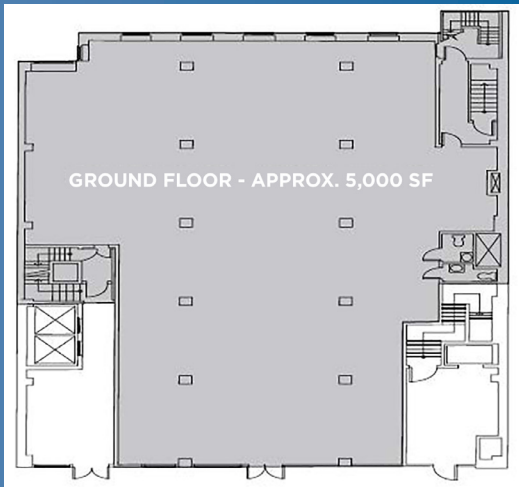
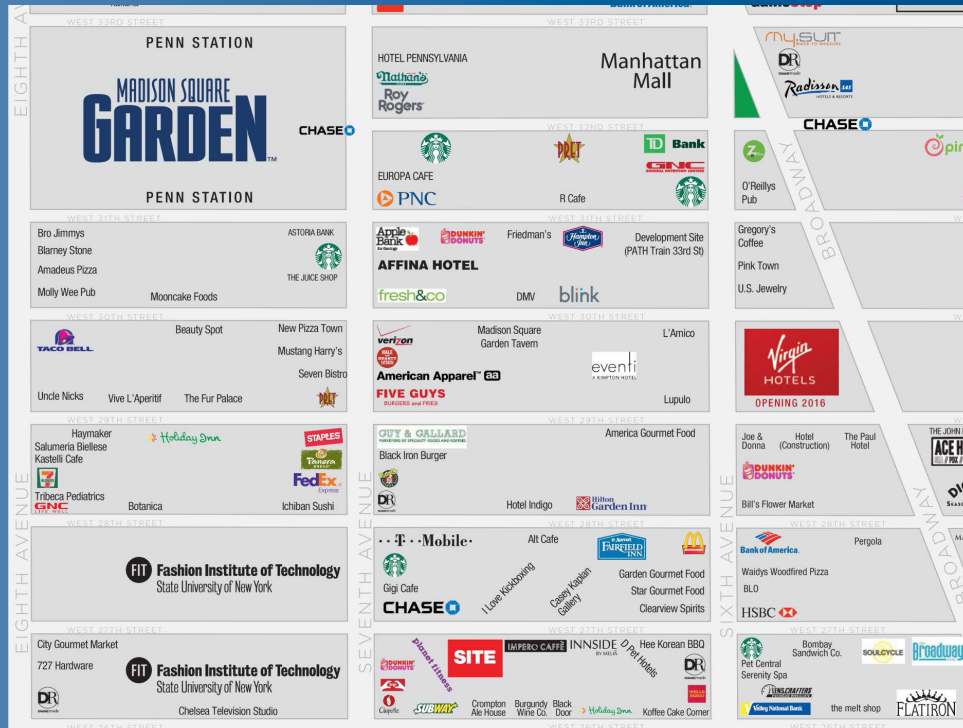
144 WEST 27TH STREET

Between 6th & 7th Avenues

CHELSEA



144 WEST 27TH STREET



ADDRESS

144 West 27th Street – New York, New York 10001
(Between 6th and 7th Avenues)

SIZE

Ground Floor: Approximately 5,000 SF
Selling Lower Level: Approximately 4,500 SF

CEILINGS

Ground Floor: 16'
Lower Level: 10'5"

ASKING PRICE

Upon Request

POSSESSION

Immediate

COMMENTS

- Prime Chelsea retail/restaurant opportunity located steps away from FIT and Penn Station
- Directly adjacent to the new INNSIDE by Melia hotel with over 300 rooms
- Sky lights and windows in the rear of the space on ground and lower levels for great natural light throughout

NEIGHBORS

FIT, INNSIDE by Melia, Kobeyaki, Planet Fitness, Hilton New York, Ainsworth, Chipotle, Rare Bar & Grill