



REDISCOVER 575 MADISON AVE FROM THE INSIDE OUT

LOCATION RENOVATION VALUE

Situated on the corner of **57TH STREET, ON A DOUBLE-WIDE AVENUE** and steps to Central Park, **575 MADISON AVE** recently completed a stunning lobby renovation that is both inviting and bold—showcasing a unique application of materials with a vibrant rotating art gallery. In addition, ownership is constructing a **TENANT-EXCLUSIVE AMENITY CENTER** on the top floor that will feature conferencing and lounge space with an outdoor terrace.


The **ELEVATED TENANT EXPERIENCE** you feel the moment you step inside the building, coupled with the **SIGNIFICANT VALUE** in one of the **MOST STYLISH NYC NEIGHBORHOODS**, warrants a fresh look at this matchless opportunity.



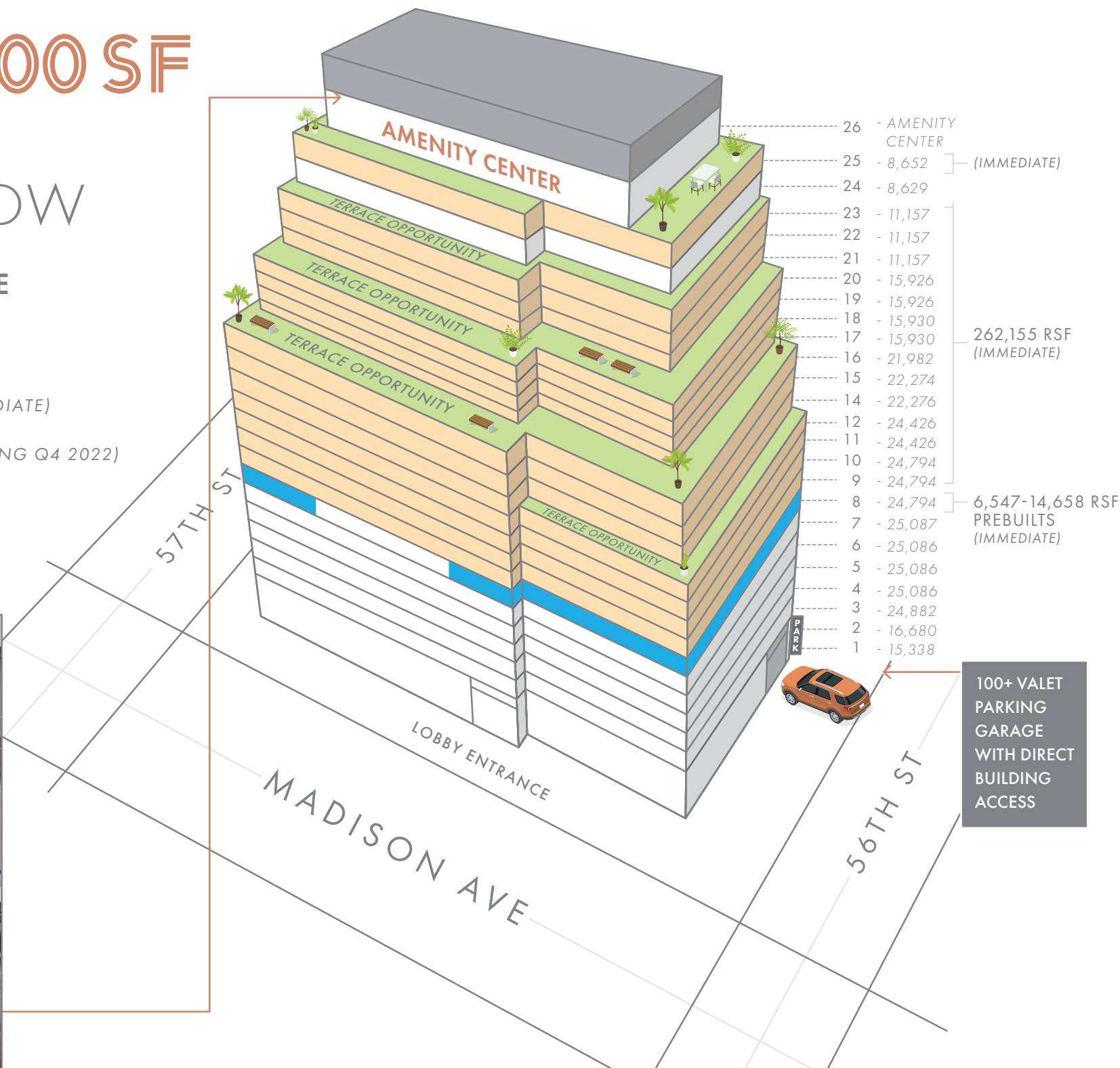
50,000 - 300,000 SF

OF CONTIGUOUS SPACE AVAILABLE NOW

LARGE BLOCK + PRE-BUILTS AVAILABLE

-  FLOORS 9-23: 262,155 RSF (IMMEDIATE)
-  8TH FLOOR PRE-BUILT: 14,658 RSF (IMMEDIATE)
-  8TH FLOOR PRE-BUILT: 6,547 RSF (DELIVERING Q4 2022)

 [Click for Pre-Built Virtual Tour](#)



THE NEWLY DESIGNED LOBBY

BLENDS MATERIALS & TONES TO BRIGHTEN AND ACTIVATE THE SPACE.
LOCAL & EMERGING ARTISTS ARE FEATURED THROUGHOUT.



THE PENTHOUSE AMENITY CENTER

OFFERS TENANTS EXCLUSIVE CONFERENCING
AND LOUNGE SPACE, WHICH FEATURES AN OUTDOOR TERRACE.

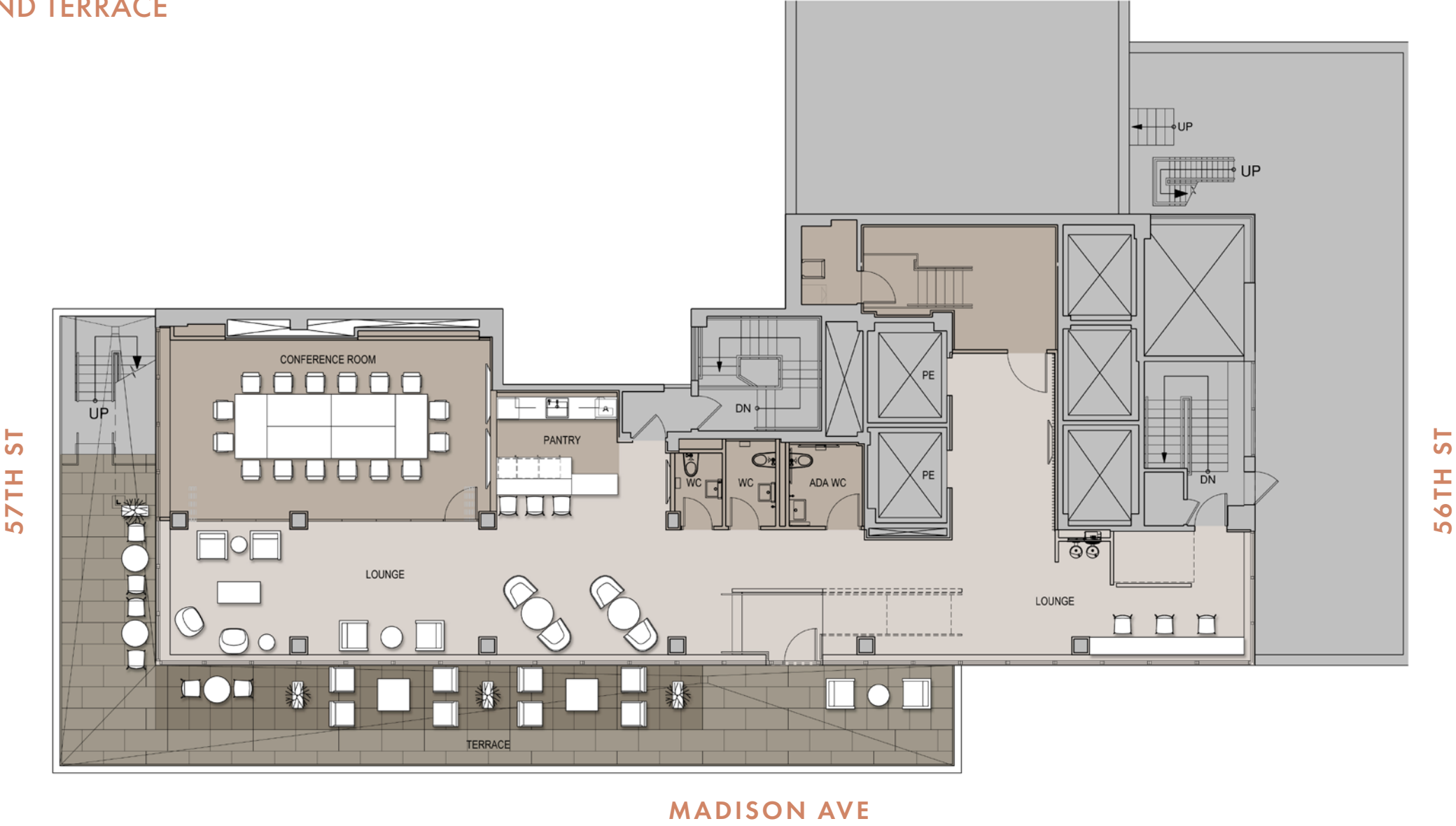




PENTHOUSE AMENITY CENTER + TERRACE

PENTHOUSE AMENITY CENTER PLAN

CONFERENCE ROOM, PANTRY, LOUNGE SPACE, +
WRAPAROUND TERRACE




575 IS MOVE-IN READY

RECENTLY COMPLETED 8TH FLOOR PRE-BUILT



RECEPTION AREA

 [Click for Virtual Tour](#)

FUNCTIONAL + LIGHT-FILLED AREAS



THOUGHTFULLY DESIGNED WORK AREAS





DEDICATED PANTRY + SOCIAL SPACE

NUMEROUS PRIVATE TERRACE OPPORTUNITIES
THROUGHOUT THE BUILDING

PRIVATE TENANT TERRACE - 17TH FLOOR

A NEIGHBORHOOD THAT SPEAKS FOR ITSELF

