

202 CENTRE ST, 7TH FLOOR

BETWEEN HOWARD AND GRAND

SoHo



Loft Office with Outdoor Terraces

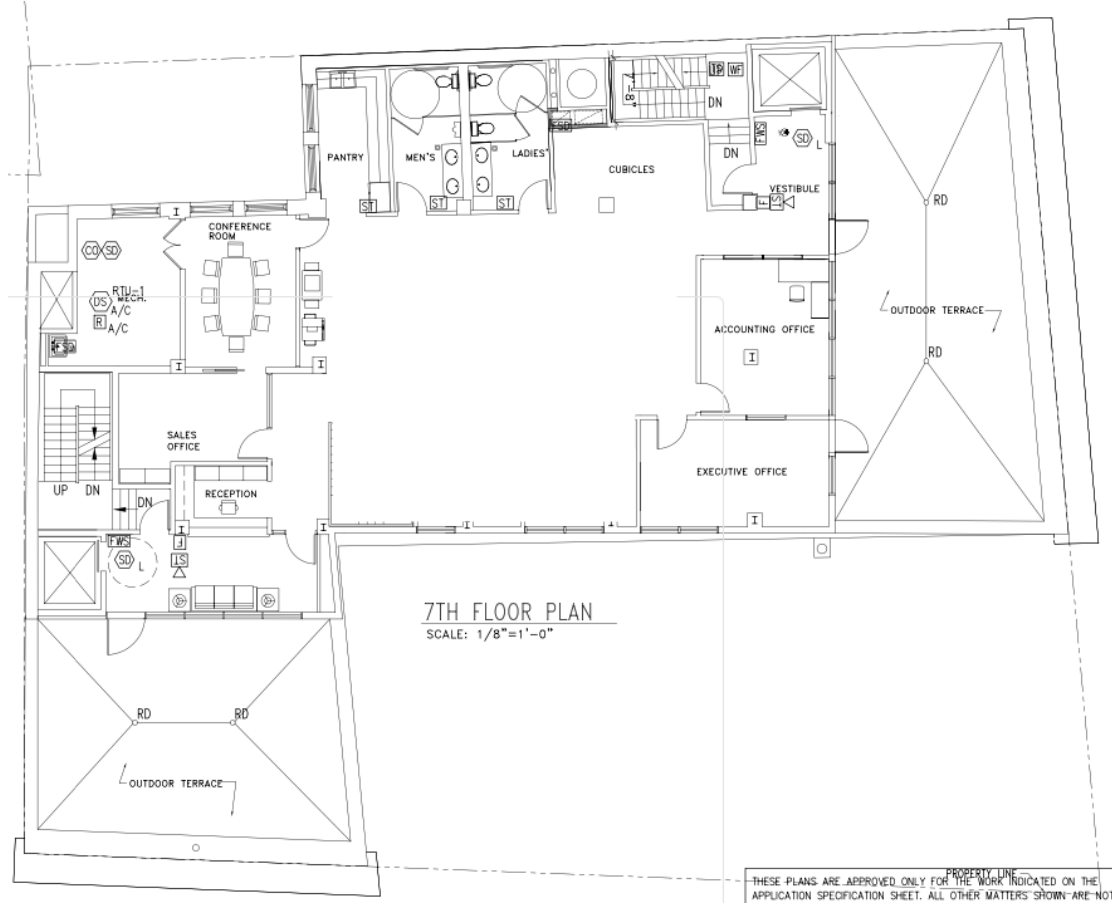
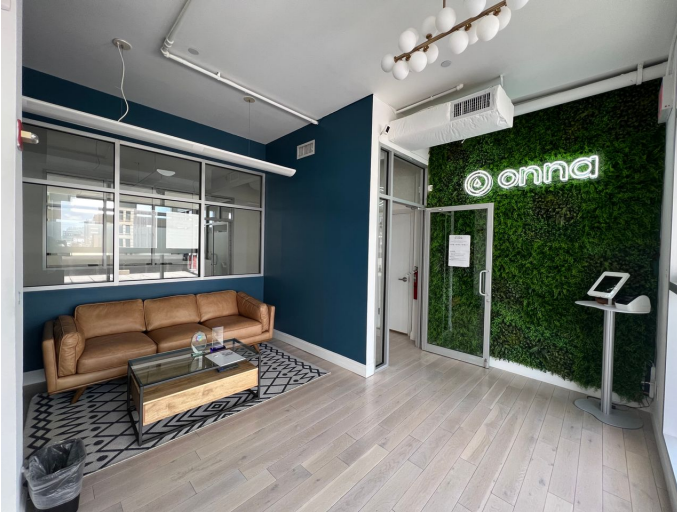
Get a view of Manhattan with two outdoor terraces (adding up to 2,000 SF) facing West and South. Move-in ready condition.

- 2 Keyed Elevator Opens to Floor
- Private Bathrooms
- Pantry/Kitchen
- 4 Conference Rooms
- Large Open Bullpen
- 2 Large Outdoor Terraces
- Tons of Natural light

Property Details Entire 7th Floor Loft

Ask:	Upon Request
RSF:	4,700 SF approx.
Possession:	Immediately
Ceiling:	12 ft approx.
Term:	Negotiable

All Uses Considered



Floor plan does not reflect current layout - for reference only.

202 CENTRE ST, 7TH FLOOR

202 CENTRE ST, 7TH FLOOR

