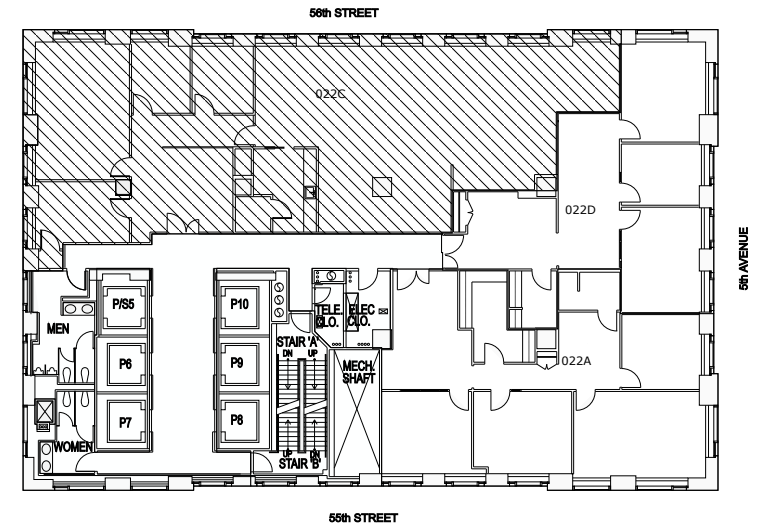
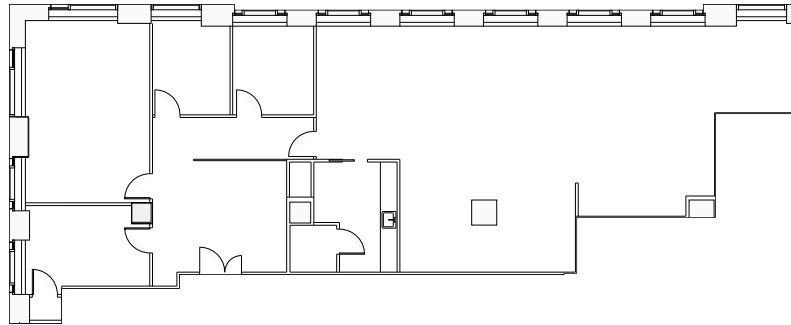


Fifth Avenue's Most Private Address.

Seven Twelve Fifth Avenue

Partial 22ND Floor - 4,845 RSF



Key Plan
Not To Scale

Rediscover a Plaza District Classic.

Powerful and grandly intimate, the timeless building at 712 5th Avenue is a monument to ambition with quintessential Central Park views. Each boutique floorplate of this premium commercial offering comprises approximately 9,800 RSF with partial to full floors available. Original architects Kohn Pedersen Fox return to create stunning upgrades and a bold lobby renovation, inspiring a new era of excellence in the Plaza District and inviting the next generation of prominent players to make their ascent.

A Pillar of Midtown Prestige.

An Iconic Address

Enjoy the luxury of true focus, elevated above New York City's most iconic avenue. Private, prestigious and undeniably premium; every moment here raises the everyday into the extraordinary.





The Business of Bold Perspectives.

Be Untouchable

Surrounded on all sides by New York City's most iconic buildings and imbued with the energy of the streets below, every workspace provides undeniable presence and understated style.

Where Purpose Meets Point of View.

Seize a New Perspective

Here, presiding over Midtown, an address to truly impress. Endless city views meet moments of reflection, celebration and determination, while a coveted Central Park backdrop inspires what's next.



SevenTwelve
Fifth Avenue



A Grand Arrival for Grander Pursuits.

A Fifth Avenue Transformation

The lobby is evolved for a new generation by original architects Kohn Pedersen Fox, featuring a curved acrylic entrance and marble reception.