



For Sublease

5 Manhattan West

Between Ninth & Tenth Avenues

Entire 12th Floor

- 112,265 RSF; Reasonable divisions will be considered
- Available immediately
- Sublease through December 2030
- High-power capacity and floor loads
- Two IDF closets with 10-20 tons of supplemental cooling
- Flexible phone booths and huddle rooms throughout
- Sit-stand desks through
- Café in reception on the floor
- Full commercial kitchen in place
- Photo/video and podcast studios in place
- Raised flooring throughout
- +/-18' ceiling heights
- Fortune 500 Sublessor

Executive office



Open work areas



Collaboration areas



Conference room with
collapsible wall



Podcast Studio



Film / Photo Studio



Views

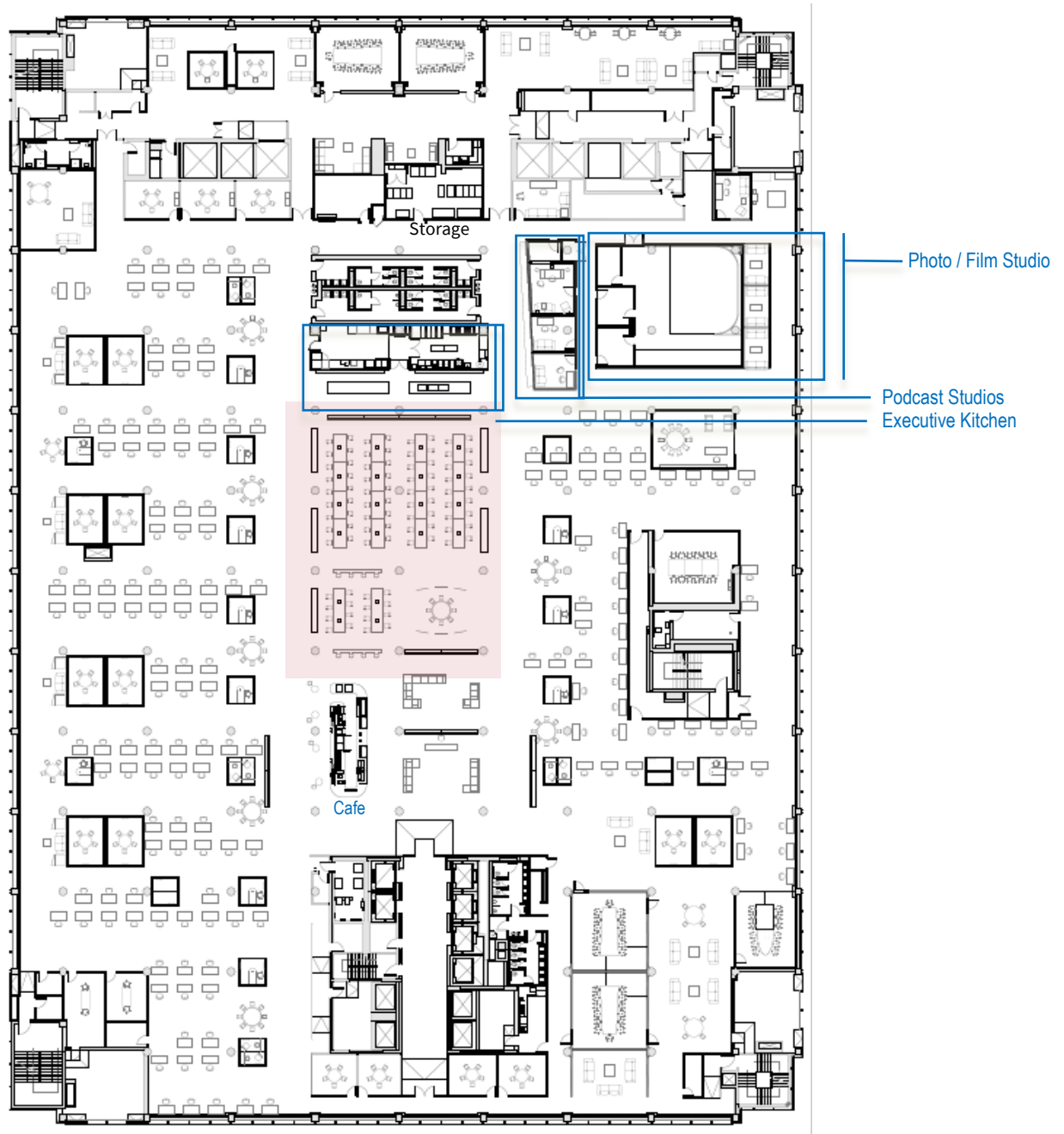


Views



For Sublease

5 Manhattan West | Entire 12th Floor

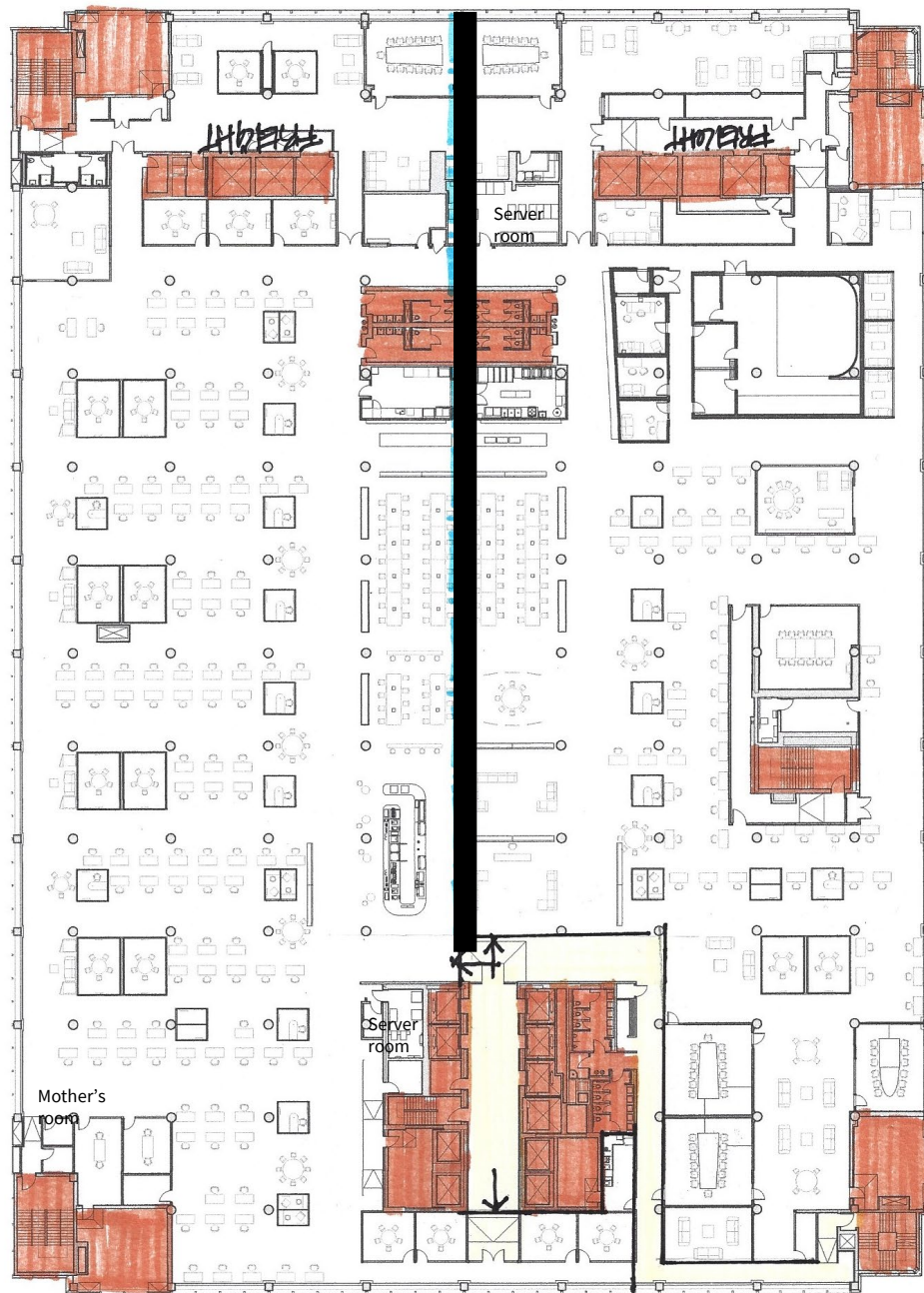


**Some furniture has been removed.*

- 158 workstations
- 2 large executive offices
- 7 large board/conference rooms
- 23 huddle rooms (+/-4ppl or office)
- 10 collaboration lounges
- 7 collaboration table areas
- 1 yoga studio
- Film/photo studio
- Podcast Studio
- Executive kitchen
- Wellness room
- Ample lounge and soft seating areas
- Café for barista
- Storage

For Sublease

5 Manhattan West | Entire 12th Floor



**Some furniture has been removed.*

- 108 workstations
 - 3 conference room
 - 15 – 5 person meeting rooms
 - 8 huddle rooms
 - 4 phone booths
 - 2 lounges
 - Full commercial kitchen
 - Barista station
 - Mother's room
 - Reception
- 78 workstations
 - 6 offices
 - 5 conference rooms
 - 4 huddles rooms
 - 2 phone booths
 - Multiple collaboration spaces
 - Full commercial kitchen
 - Reception