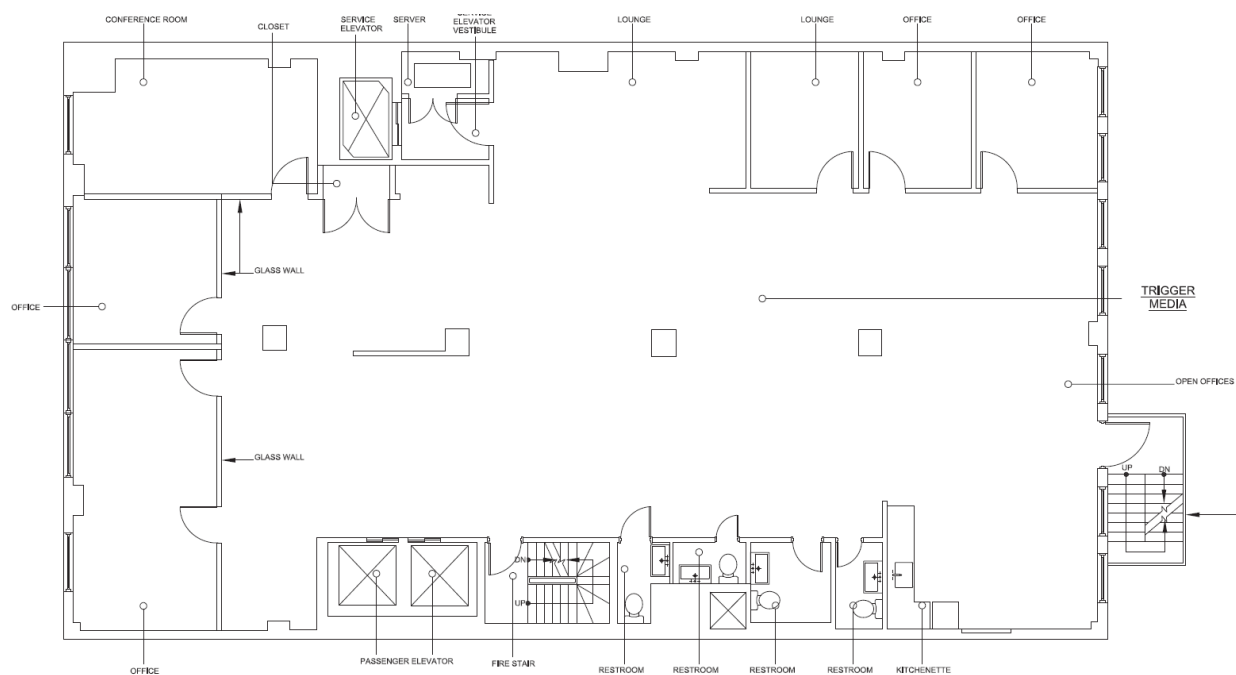


135 West 26 Street - Entire 2nd Floor - 5000 RSF

•13'+ high ceilings •Beautifully constructed kitchen with granite countertops and large Island
•Extra large front windows •4 Offices and 2 Conference rooms •Hardwood floors •Central air conditioning •Direct electric •Water/sprinkler \$110/\$70 per month •Term 3-5 years •Annual escalations 3% •Trash extra •Prop. share of RE Taxes over Base Year



Photos

