

# 7 West 30<sup>th</sup> Street

Entire 5<sup>th</sup> Floor

## *Midtown – Full Floor Loft Sublease*



- Built with 3 offices / breakout rooms, large open area, pantry, and private restrooms
- Direct elevator presence
- Loft building
- Modern furniture could be made available
- Open ceiling
- Fully secure lobby
- Proximity to Penn Station

**Creative modern layout  
space in heart of Midtown**

---

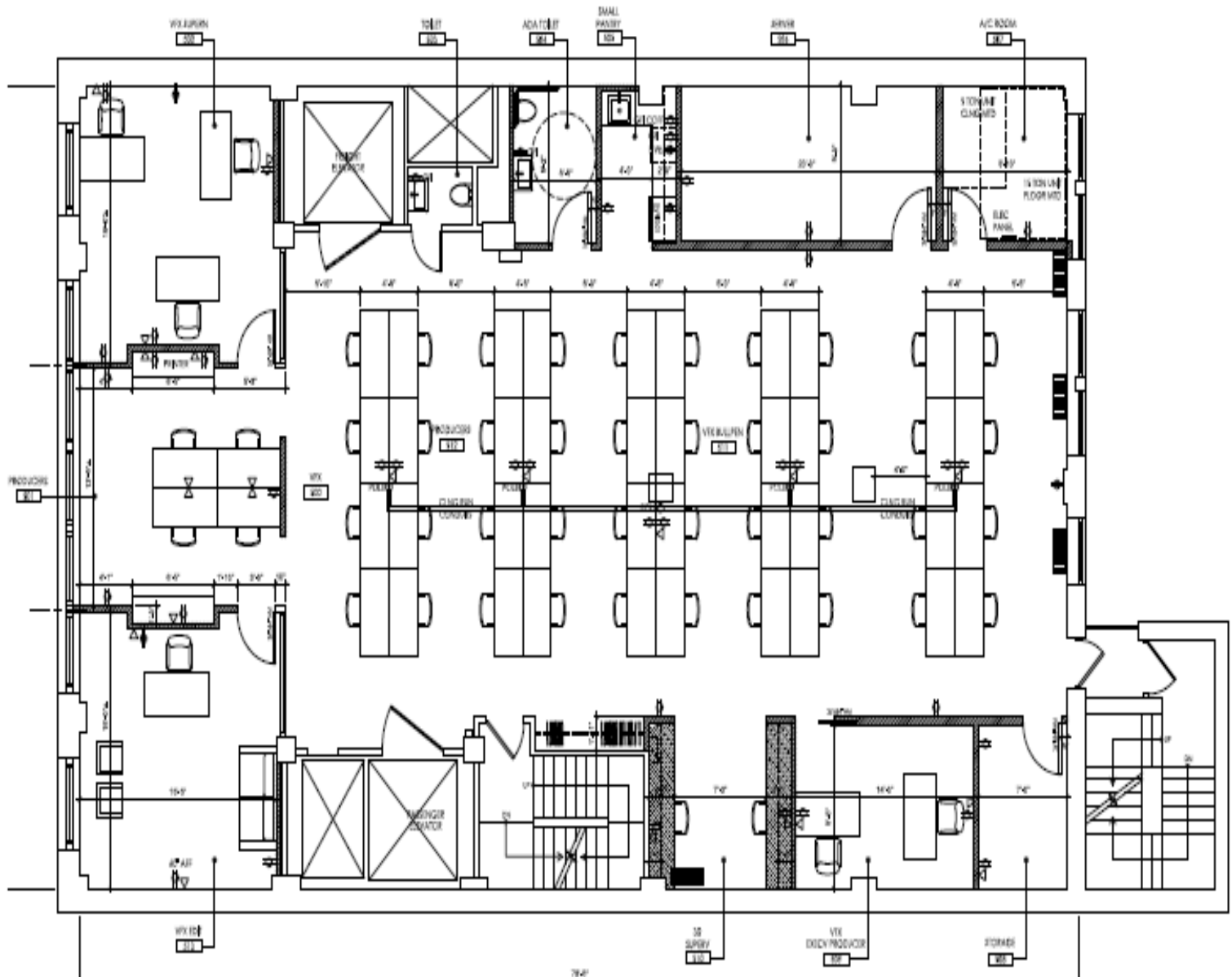
<b>Available Space:</b>	Entire 5 <sup>th</sup> Floor: Approx. 5,000 RSF
<b>Possession:</b>	Immediate
<b>Term:</b>	Through March 30, 2027
<b>Asking Rent:</b>	Upon Request

---

# 7 West 30<sup>th</sup> Street

Entire 5<sup>th</sup> Floor

*Entire 5<sup>th</sup> Floor – 5,000 RSF*



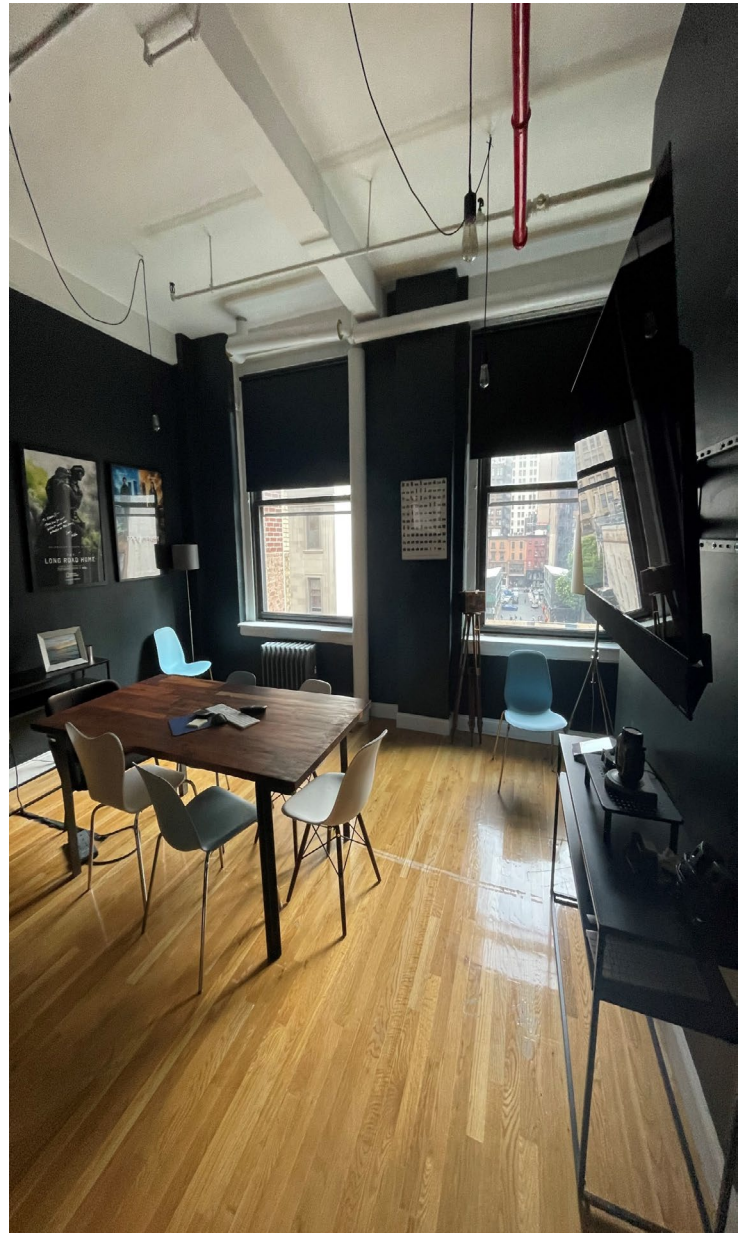
① 5TH FLOOR POWER, DATA AND FURNITURE PLAN  
SCALE 1/8" = 1'-0"



# 7 West 30<sup>th</sup> Street

Entire 5<sup>th</sup> Floor

*Photos -*





# 7 West 30<sup>th</sup> Street

Entire 5<sup>th</sup> Floor

*Photos -*





# 7 West 30<sup>th</sup> Street

Entire 5<sup>th</sup> Floor

## *Photos*

