

# 477 Madison Avenue

## SUBLEASE AVAILABILITY

**Entire 24<sup>th</sup> Floor**  
[Penthouse]

**5,188**  
RSF

**Through 12/2029**  
Term

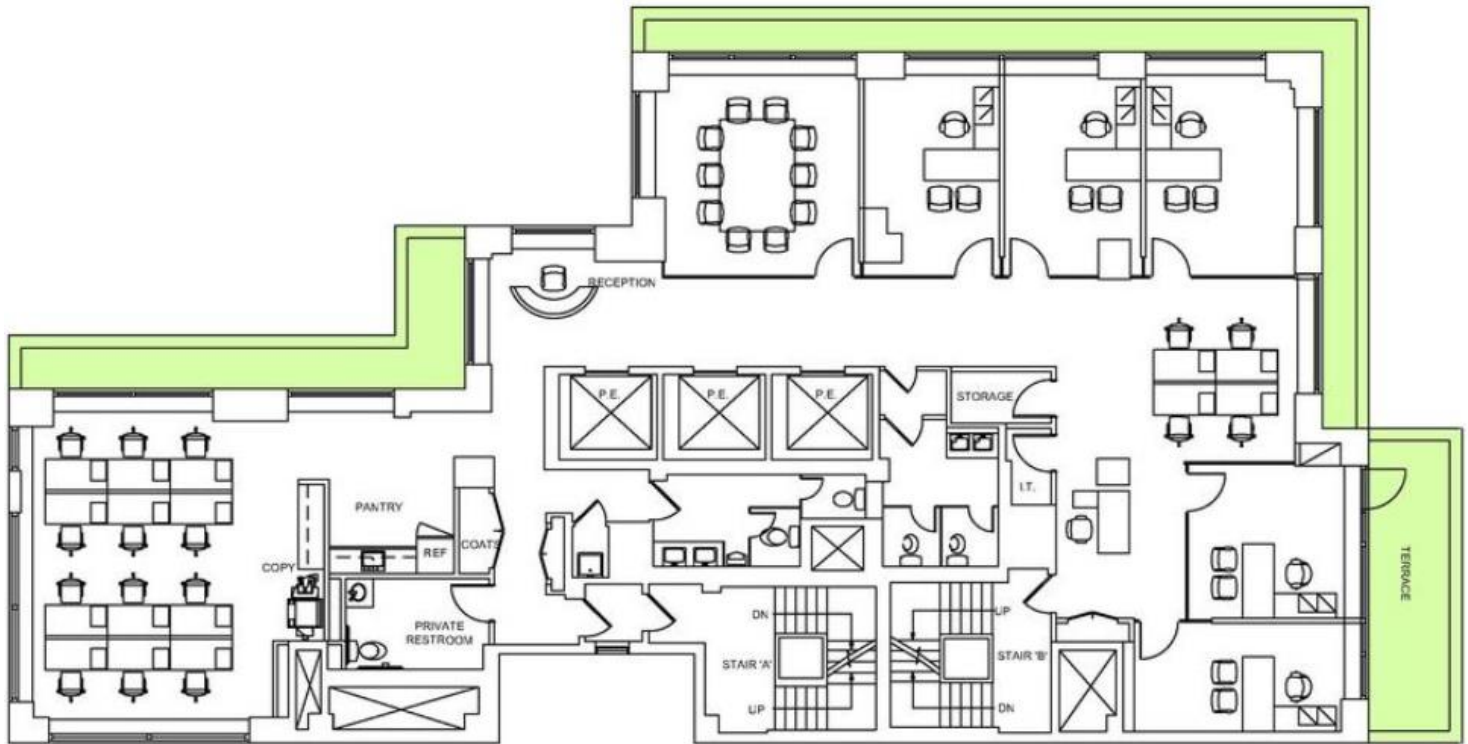
**Immediate**  
Possession

- Penthouse floor – Fantastic light
- Boutique full floor opportunity
- High-end installation
- Polished concrete floors + exposed ceiling
- Restoration Hardware furniture
- Private outdoor terrace overlooking St. Patrick's Cathedral
- Recently renovated asset
- Building amenities: Conferencing, Lounge seating / Recreation, Gym + Locker



---

## Entire 24<sup>th</sup> Floor | 5,188 RSF



### Layout

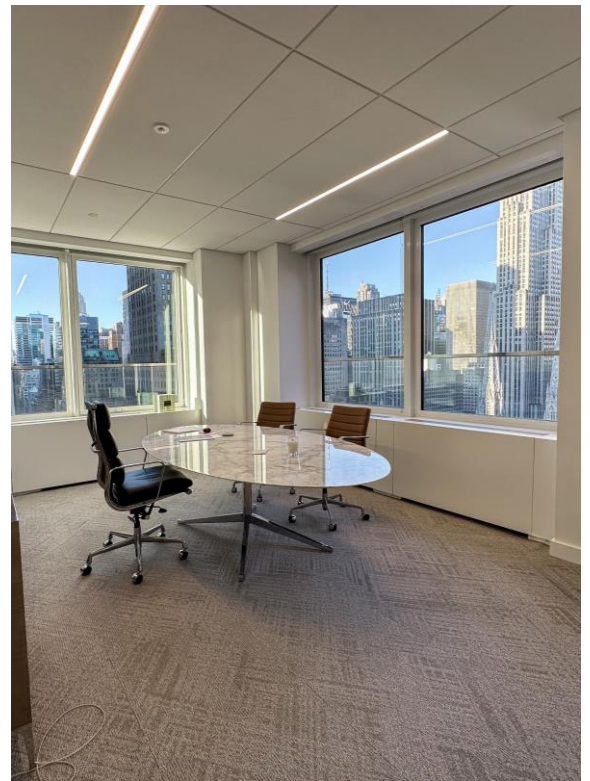
---

- One (1) large conference room
- Five (5) private offices
- Open area seating for twelve (12)
- One (1) open collaboration area
- Soft seating reception
- Open pantry
- Storage

**477 Madison Avenue**



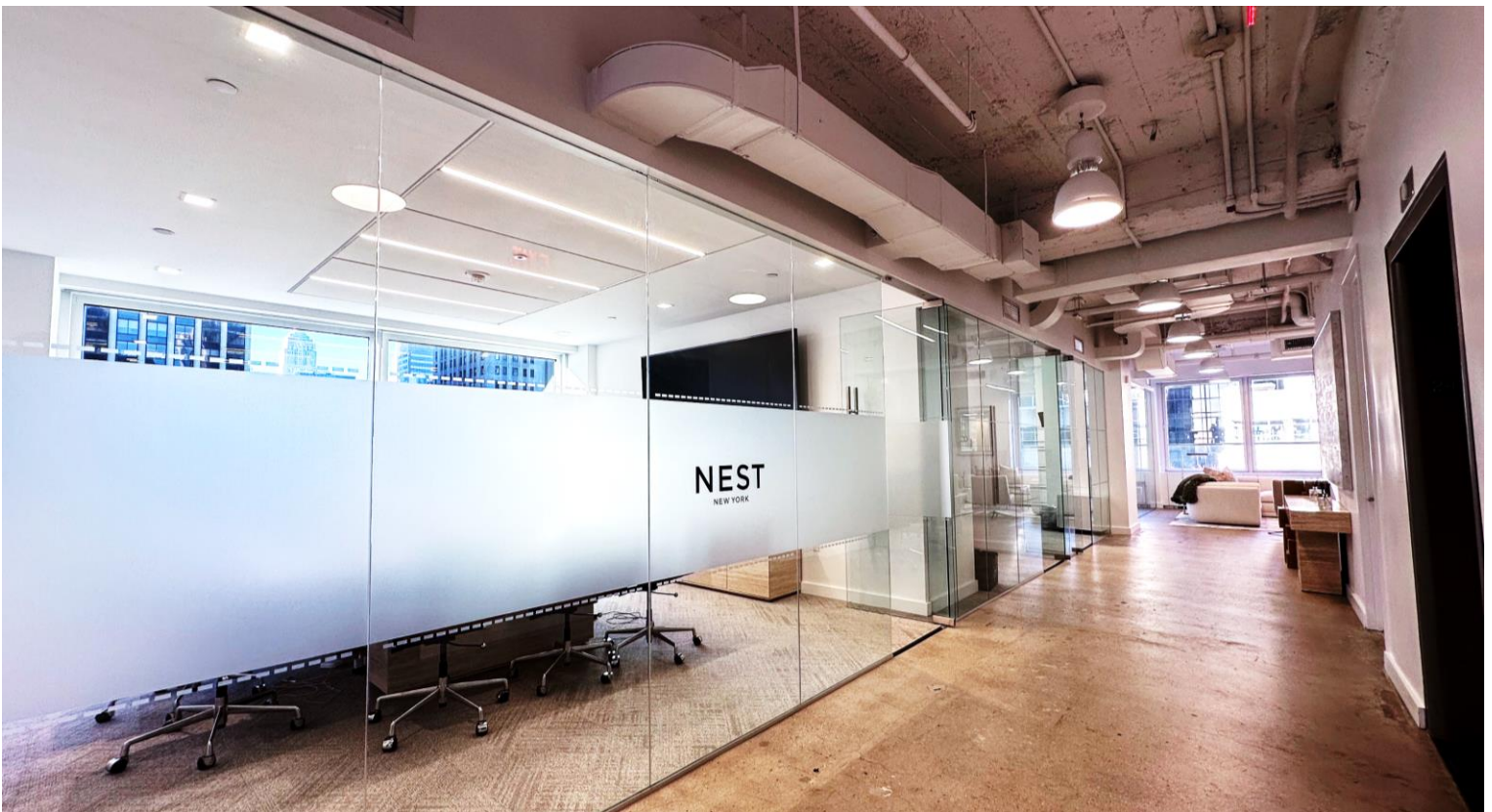
## Space Photos



**477 Madison Avenue**



## Space Photos



**477 Madison Avenue**



## Views



**477 Madison Avenue**